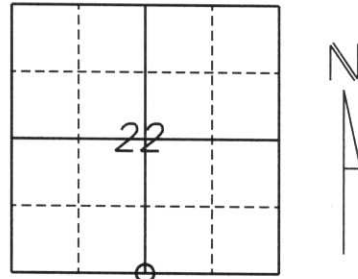


U.S. PUBLIC LAND SURVEY MONUMENT RECORD

Note: This form is intended and designed to fulfill all requirements of Wisconsin Administrative Code, Chapter A-E 5.02, U.S. Public Land Survey Monument Record (3) (a) (b) (c) (d) (e) (f) (g) (h) (i). An additional sheet may be added if necessary to conform with said requirements.

(a) Corner location: Township 33 North
 Range 6 East
 Town/City/Village ROCK FALLS
 County LINCOLN



Section 22

(b) (f) (g) (h) Description of monument found at this corner and if it was accepted, state all evidence (material, testimonial, occupational, plats, records, other monuments) used as a basis for accepting. If not accepted or if nothing was found, state evidence used as a basis for establishing location. If reestablished through lost corner proportionate methods, indicate all monuments, distances and directions used to establish.

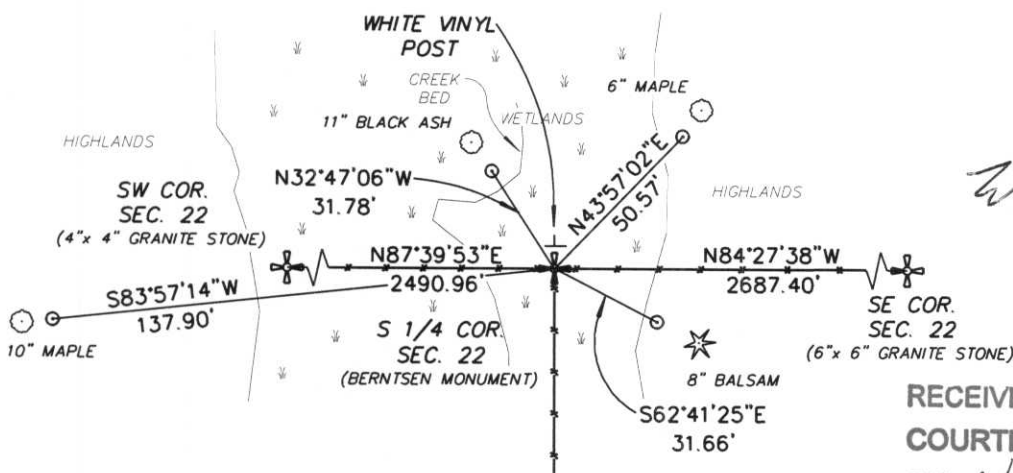
*The original corner was established by Jackson L. Prentice in 1854. Original bearing trees:
 16" Ash, N16°E, 95 lks.
 9" Ash, S61°W, 10 lks.*

*Revisited in April of 1943 by Francis X. Fox (Fuchs). Set 1/4 stone with bearing trees:
 14" Elm N43°E, 40.8'
 7" Elm N35°W, 32.5'*

Found intersection of fencelines. Fit well with physical calls made by Fox. Unable to recover stone. Set Berntsen monument at intersection of fencelines. Also set (4) 7/8" rebars with Lincoln County caps as witness monuments approx. 1 foot from bearing trees.

(c) (d) (e) Plan view of corner with ties to at least 4 witness monuments. If in disagreement with previously established corner, show the distances between the two corners and also indicate the ties to the disputed corner.

○ SET 7/8" REBAR WITH LINCOLN COUNTY CAPS
 APPROX. 1 FOOT FROM BEARING TREES.
 -x-x-x- OLD FENCELINE



RECEIVED AT LINCOLN COUNTY
 COURTHOUSE THIS 12TH DAY
 OF November 20 01

Tony Dalmer
 LAND INFORMATION OFFICE

(i) I, William W. Nutter RLS, S-2299
 (type or print name) certify that the corner location on this record was determined by me or under my direction and control and that this U.S. Public Land Survey Monument Record is correct and complete to the best of my knowledge and belief.

William W. Nutter 11-9-01
 Signature Date

Index No. Q-15









