

# U S PUBLIC LAND SURVEY MONUMENT RECORD

NOTE: This form is intended and designed to fulfill all requirements of Wisconsin Administrative Code, Chapter A-E 7.08 U.S. Public Land Survey Monument Record (3) (a-i)

A-E 7.08(3)(a) Identity of corner:  
 SOUTH 1/4 CORNER SECTION 19,  
 TOWNSHIP 33 NORTH,  
 RANGE 06 EAST OF THE 4TH PM,  
 TOWN OF ROCK FALLS,  
 COUNTY OF LINCOLN

WISCORS - LINCOLN COUNTY  
 N: 174,660.266 USft (174,660.290)  
 E: 367,521.588 USft (367,521.530)  
 Datum: NAD83 (2011)  
 GNSS Method RTN - Direct  
 GNSS Control WISCORS VRS



The coordinate value shown has been verified by the average of two or more GPS observations at a markedly different time. Coordinates shown in parenthesis are provided by Lincoln County.

A-E 7.08(3)(b)

Original Surveyor: Jackson L. Prentice

Date of Original Survey Commenced: October 27, 1852  
 Completed: November 9, 1852

Original Accessories:  
 Hemlock 30 S 43° W 25 Links  
 Hemlock 18 N 22° W 20 Links

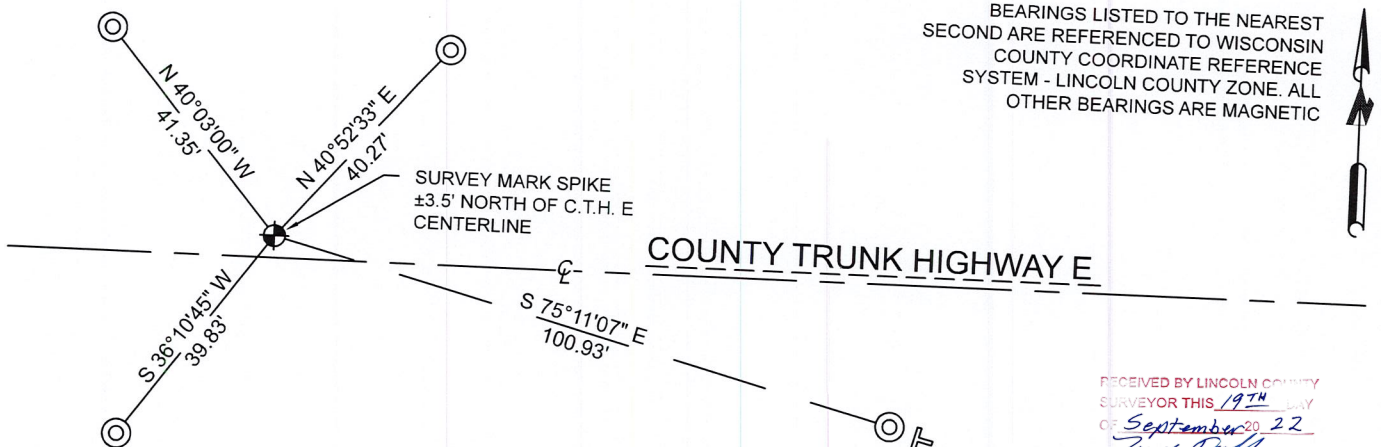
1941 - Francis X. Fox - Survey of TWP., 32 & 33 N. ~ R.6 R. Town of Rock Falls - indicates "set corners to all forties on all quarter & section lines" on Map M136A.

February 9, 2010 - Surveyor 1192 - Lester J. Schmidt - indicates this position as "SM - 1 nail" on Map L474B.

December 22, 2017 - Surveyor 1523 - Todd J. Loftus - indicates this position as "SM - 1 nail with head sheared off" on Map S640B.

May 17, 2022 - While performing the 2022 Lincoln County PLSS Corner Remonumentation and GPS Services project, I found the shaft of a nail near the computed position provided by Lincoln County. I replaced the shaft with a Berntsen Survey Mark steel spike 3" long with a 1" diameter dimpled head, The monument is 3.5 feet north of C.T.H. E centerline. I established 4 new reference monuments as shown below.

A-E 7.08(3)(c)(d) Plan view of corner with references to at least 4 witness monuments.

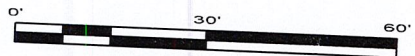


BEARINGS LISTED TO THE NEAREST SECOND ARE REFERENCED TO WISCONSIN COUNTY COORDINATE REFERENCE SYSTEM - LINCOLN COUNTY ZONE. ALL OTHER BEARINGS ARE MAGNETIC

RECEIVED BY LINCOLN COUNTY SURVEYOR THIS 19TH DAY OF September 20 22  
*Jeffrey DeMuth*  
 COUNTY SURVEYOR

## LEGEND

- Berntsen Survey Mark spike, set
- 7/8" diameter X 30" long - iron rod with 2" diameter aluminum cap, set
- Vinyl T-post, set ±1 foot SE of witness



A-E 7.08(3)(e) 1852 Surveyor set a post, 1941 Surveyor did not describe the monument., 2010 Surveyor found an SM - 1 nail, 2017 Surveyor found a SM - 1 nail with head sheared off. I found the shaft of a nail and replaced it with a Berntsen Survey Mark steel spike.

A-E 7.08(3)(f) I accept this monument as a FOUND PERPETUATED LOCATION OF THE CORNER.

A-E 7.08(3)(g)(h) This corner was not determined through lost-corner-proportionate methods.

A-E 7.08(3)(i) I, Jeffrey L. DeMuth, Professional Land Surveyor No. S-2656, hereby certify that the corner location on this record was determined by the Lincoln County Surveyor, and the monuments found or set as shown hereon were measured by me or under my direction and control, and that this U.S. Public Land Survey Monument Record is correct and complete to the best of my knowledge, and belief.



SIGNATURE

*Jeffrey L. DeMuth*

September 16, 2022

DATE

Q-3

## REPORT

### 2022-Lincoln County PLSS Corner Remonumentation and GPS Services

Wisconsin Corner Point Identification Number: 43306190020

Surveyor: Jeffrey L. DeMuth – S2656

Corner monument: Found nail shaft (head broken off), replaced with Berntsen “Survey Mark” steel spike, 1” diameter head, 3” long.

Field Book: Cardinal North – Lincoln Co. Remon. – 2022-00

Page: 10

Horizontal Datum: WisCRS – Lincoln County Zone – NAD83(2011)

Date / time of initial measurement:

May 17, 2022 - Start 14:37:05 CDT – End 14:44:12 CDT

Reference monuments:

4 – Set - 7/8” diameter X 30” long iron rods with 2” diameter Lincoln Co. aluminum cap.

#### Coordinate Table

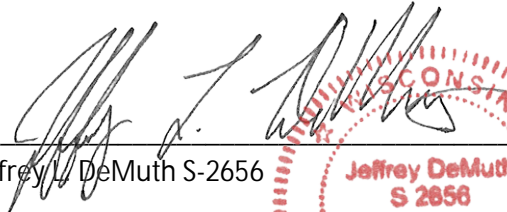
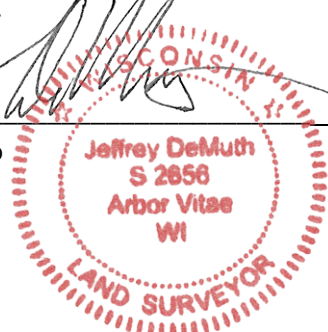
	County Provided	2022 Measurement	Difference
North	174660.290	174660.266	0.02
East	367521.530	367521.588	-0.06

Observed coordinates match existing calculated coordinates within reason.

Request Data Log for more information.

Additional Notes:

Corner falls  $\pm 3.5'$  north of CTH E centerline.


  
 Jeffrey L. DeMuth S-2656
 
 September 16, 2022
   
 Date



43306190020\_Mon-N





43306190020\_North





43306190020\_West





43306190020\_South





43306190020\_East

