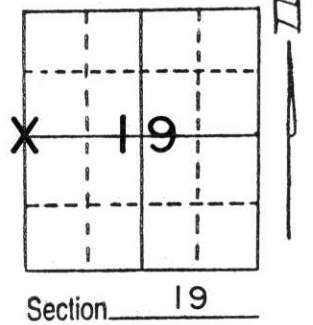


U.S. PUBLIC LAND SURVEY MONUMENT RECORD

Note: This form is intended and designed to fulfill all requirements of Wisconsin Administrative Code, Chapter A-E 5.02, U.S. Public Land Survey Monument Record (3) (a) (b) (c) (d) (e) (f) (g) (h) (i). An additional sheet may be added if necessary to conform with said requirements.

(a) Corner location: Township 33 North
 Range 7 East/~~West~~
 Town/~~City/Village~~ BIRCH
 County LINCOLN

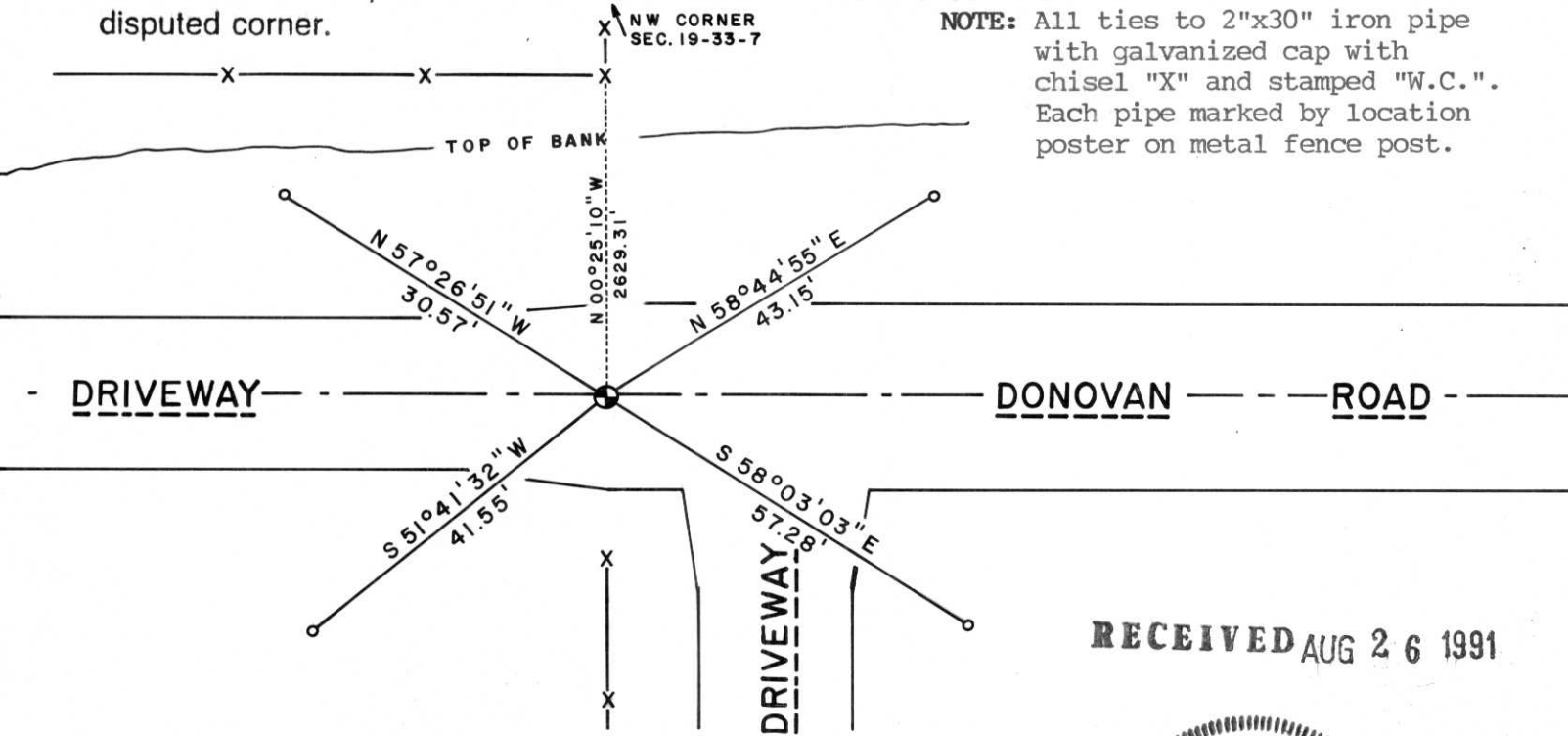


(b) (f) (g) (h) Description of monument found at this corner and if it was accepted, state all evidence (material, testimonial, occupational, plats, records, other monuments) used as a basis for accepting. If not accepted or if nothing was found, state evidence used as basis for establishing location. If reestablished through lost corner proportionate methods, indicate all monuments, distances and directions used to establish.

No reference sheet from Wisconsin Dept. of Transportation Rhinelander office was available of this corner. Believe monument marking corner was red granite stone found by Francis Fox during re-survey of Town of Rock Falls in 1941-1942. According to longtime local resident Cliff Hoffman, a red granite stone was at corner for many years, flush with gravel surface of driveway. After construction of Donovan Road, he said he was unable to find the stone, although he dug for it on several occasions. Traversed from stone found at West $\frac{1}{4}$ corner of Section 18-33-7 to iron pipe set by Fox at Northwest corner, Southwest $\frac{1}{4}$, Southwest $\frac{1}{4}$, Section 19-33-7. Location of corner computed from traverse and excavated an area 3'x5'x2.5' deep into original ground. Found no evidence of stone. Area excavated was consistent with both Fox survey and parole testimony of Mr. Hoffman. Accordingly, corner point established by proportionate measurement against Fox survey for distance and holding old North-South fence line for direction. Set standard Lincoln County aluminum Berntsen monument at corner 6" below gravel roadway surface.

(c) (d) (e) Plan view of corner with ties to at least 4 witness monuments. If in disagreement with previously established corner, show the distances between the two corners and also indicate the ties to the disputed corner.

NOTE: All ties to 2"x30" iron pipe with galvanized cap with chisel "X" and stamped "W.C.". Each pipe marked by location poster on metal fence post.



RECEIVED AUG 26 1991



Index No. 0-1

(i) I, _____
 (type or print name) certify that the corner location on this record was determined by me or under my direction and control and that this U.S. Public Land Survey Monument Record is correct and complete to the best of my knowledge and belief.

LaVerne H. Mosher
 Signature

AUGUST 7, 1991
 Date









