

U.S. PUBLIC LAND SURVEY MONUMENT RECORD

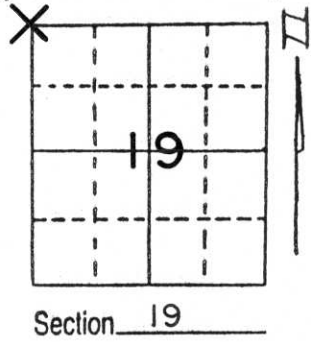
Note: This form is intended and designed to fulfill all requirements of Wisconsin Administrative Code, Chapter A-E 5.02, U.S. Public Land Survey Monument Record (3) (a) (b) (c) (d) (e) (f) (g) (h) (i). An additional sheet may be added if necessary to conform with said requirements.

(a) Corner location: Township 33 North

Range 7 East ~~8~~

Town/~~City/Village~~ BIRCH

County LINCOLN

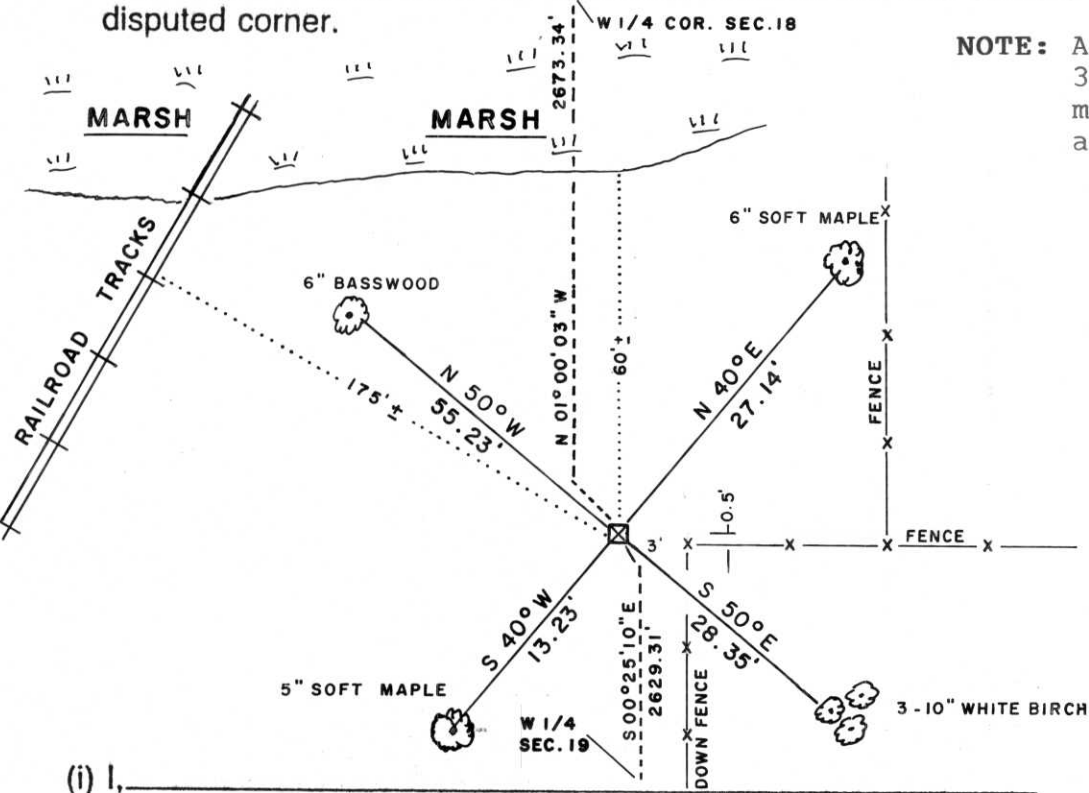


(b) (f) (g) (h) Description of monument found at this corner and if it was accepted, state all evidence (material, testimonial, occupational, plats, records, other monuments) used as a basis for accepting. If not accepted or if nothing was found, state evidence used as basis for establishing location. If reestablished through lost corner proportionate methods, indicate all monuments, distances and directions used to establish.

No record of this corner save for Francis Fox remonumentation notes for re-survey of Town of Rock Falls in 1941 or 1942. Several local longtime area residents indicated that they had searched for stone but couldn't locate it. Field search conducted on August 5, 1991, proved fruitless except for location of old fence corner at presumed corner location. Traversed from recovered stone monument at West 1/4 corner, Section 18-33-7 South 1 1/4 miles to F. Fox's iron pipe at Northwest corner, Southwest 1/4, Southwest 1/4, Section 19-33-7. Prorated distance to re-establish corner by proportionate methods. Searched theoretical location and recovered a 6"x6" red granite stone with "X" on top about 4 inches below ground surface. No scribing on top could be determined. Corner is at North base of 3" maple about 3 feet West and 0.5 feet North of old fence corner. Set a 1"x24" iron pipe at North edge of stone. Accepted stone as correct location of corner and tied out.

(c) (d) (e) Plan view of corner with ties to at least 4 witness monuments. If in disagreement with previously established corner, show the distances between the two corners and also indicate the ties to the disputed corner.

NOTE: All ties are to head of 3" cut nail in plaque mounted on blazed tree as noted.



(i) I, _____
 (type or print name) certify that the corner location on this record was determined by me or under my direction and control and that this U.S. Public Land Survey Monument Record is correct and complete to the best of my knowledge and belief.

LaVerne H. Mosher
 Signature

AUGUST 7, 1991
 Date

RECEIVED AUG 26 1991



Index No. M-1









