

U.S. PUBLIC LAND SURVEY MONUMENT RECORD

NOTE: THIS FORM IS INTENDED AND DESIGNED TO FULFILL ALL REQUIREMENTS OF WISCONSIN ADMINISTRATIVE CODE, CHAPTER A-E 7.08, U.S. PUBLIC LAND SURVEY MONUMENT RECORD (3)(a)(b)(c)(d)(e)(f)(g)(h)(i). ADDITIONAL SHEETS MAY BE NECESSARY TO CONFORM TO SAID REQUIREMENTS.

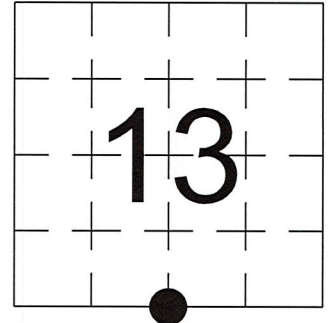
T 33 N, R 6 E

(a) CORNER LOCATION:

SOUTH 1/4 CORNER, SECTION 13
 TOWNSHIP 33 NORTH
 RANGE 6 EAST
 TOWN OF ROCK FALLS
 LINCOLN COUNTY
 WISCONSIN

(b) HISTORY OF ORIGINAL CORNER:

ORIGINAL SURVEYOR: See Previous Tie Sheet
 COMMENCING DATE:
 COMPLETION DATE:
 ORIGINAL BEARING TREES:



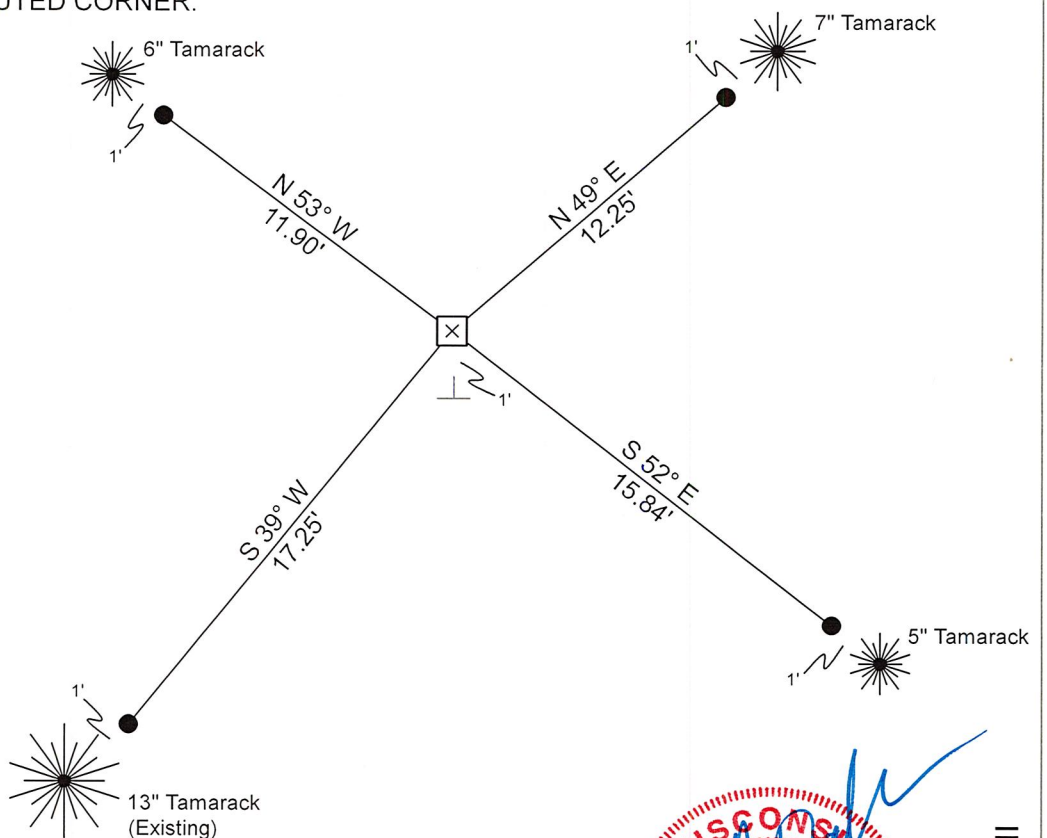
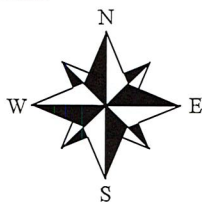
(f)(g)(h) DESCRIPTION OF MONUMENT FOUND AT THIS CORNER AND IF IT WAS ACCEPTED. STATE ALL EVIDENCE (MATERIAL, TESTIMONIAL, OCCUPATIONAL, PLATS, RECORDS, OTHER MONUMENTS) USED AS A BASIS FOR ESTABLISHING LOCATION. IF RE-ESTABLISHING THROUGH LOST CORNER PROPORTIONATE METHODS, INDICATE ALL MONUMENTS, DISTANCES, AND DIRECTIONS USED TO ESTABLISH. INDICATE TYPE OF MONUMENTS FOUND OR SET.

6/22/1971, E. Dahl, found Stone Monument with polished top.

11/13/2023, I, Anthony R. Dallman, PLS-2405, found a 6"X 6" Granite Monument, 1" below water level. I accepted this location and set witness monuments, as shown in the sketch below, to further perpetuate the corner location.

(c)(d)(e) PLAN VIEW OF THE CORNER WITH TIES TO AT LEAST FOUR WITNESSES. IF IN DISAGREEMENT WITH PREVIOUSLY ESTABLISHED CORNER, SHOW THE DISTANCES BETWEEN THE TWO CORNERS AND ALSO THE TIES TO THE DISPUTED CORNER.

- Tie bearings by hand-held compass.
- Tie distances by steel tape.
- Not to scale.



I, ANTHONY R. DALLMAN, WISCONSIN PROFESSIONAL LAND SURVEYOR, S-2405, HEREBY CERTIFY THAT THE CORNER LOCATION ON THIS RECORD WAS REFERENCED BY ME OR UNDER MY DIRECTION AND CONTROL AND THAT THIS U.S. PUBLIC LAND SURVEY MONUMENT RECORD IS COMPLETE TO THE BEST OF MY KNOWLEDGE AND BELIEF.



INDEX NO. M-23

Anthony R. Dallman 02/16/24
 ANTHONY R. DALLMAN, PLS S-2405

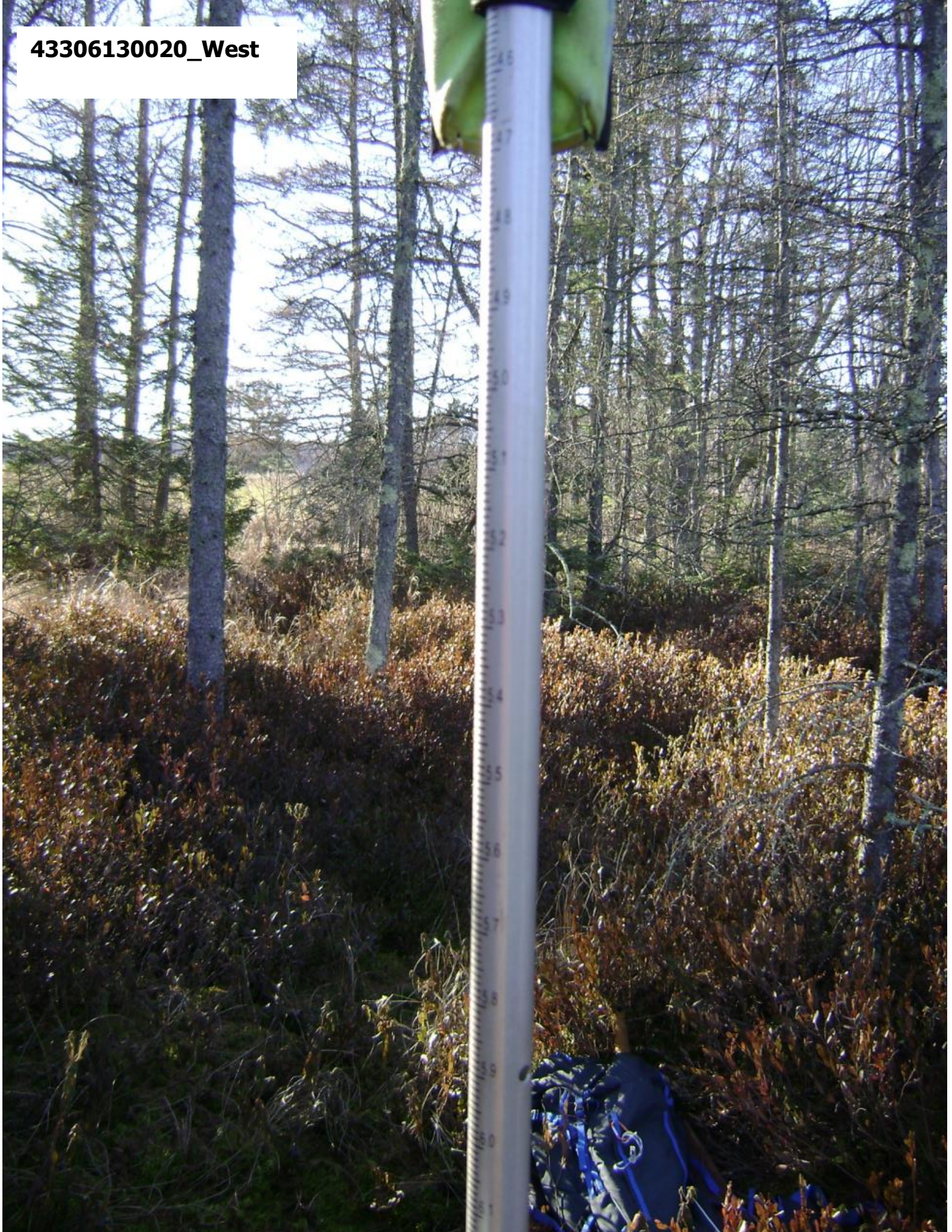
43306130020_Mon-N



43306130020_North



43306130020_West



43306130020_South



43306130020_East

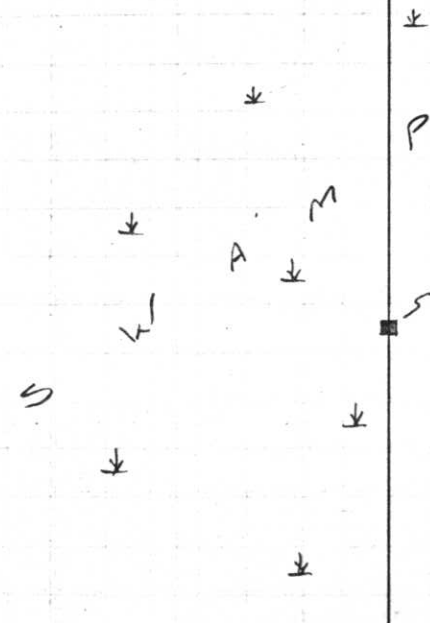
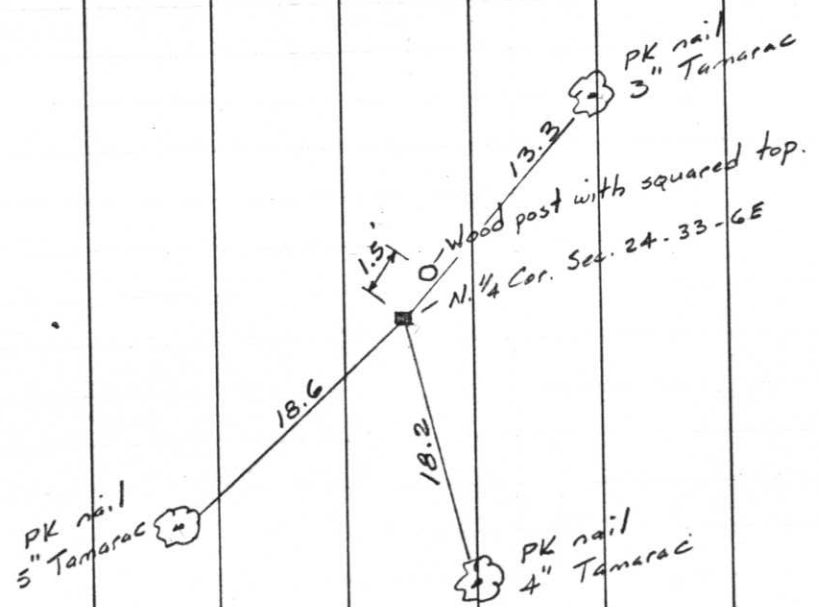


T33N R6E

June 22, 1971

II

REFERENCES



N 548, 437.61
 E 2,081, 535.20
 Sec. 24-33-GE
 Granite stone set by F. Fox 1940
 Found by E. Dahl 6/22/71
 Stone covered with moss and
 roots - 2" water over stone -
 unable to read scribbles - stone
 has polished top.

Project I.D. 1173-5-00 1.4 Mi.N.
 Merrill-C.T.H. "s" U.S.H. 51
 Freeway Lincoln County Wm. Scherer
 Surveyor Received from Division of
 Hwy's. Jan. 11.1973

68.











