

# LINCOLN COUNTY U.S. PUBLIC LAND SURVEY MONUMENT LOCATION RECORD

CORNER NUMBER 143367

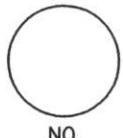
SECTION 14

TOWNSHIP 33 NORTH

RANGE 6 EAST

ROCK FALLS

CITY, VILLAGE, TOWN



LANDMARK       BENCHMARK \_\_\_\_\_  
 FOUND  SET   
 RESET   
 RE-TIED

CORNER IDENTITY: SOUTH 1/4 CORNER SECTION 14

LINCOLN COUNTY COORDINATE: N: 179722.08

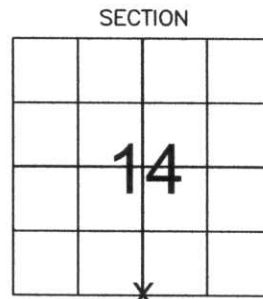
E: 388605.01

ELEVATION--(FEET): \_\_\_\_\_ DATUM: \_\_\_\_\_

WEATHER: PARTLY CLOUDY

DATE OF SURVEY: 10-28-05 TEMPERATURE: 45 °F

SURVEY PARTY: NATHAN WINCENTSEN, KEITH WALKOWSKI



LOCATION  
(Indicated By X)



## BASIS FOR MONUMENT LOCATION: (DESCRIBE METHOD OF SURVEY AND CORNER AUTHENTICATION)

EXCAVATED FOR SOUTH 1/4 CORNER WITH COUNTY GRADALL, FOUND GRANITE STONE ±4' BELOW ROAD SURFACE TIPPED. RESET STONE AND SET 1" IRON PIPE ON NORTH SIDE OF STONE. ACCEPTED STONE AS CORNER LOCATION AND PERPETUATED CORNER AS SHOWN BELOW.



CERTIFIED CORRECT:

*Keith J. Walkowski*

Registered Land Surveyor

DATE: Nov. 27<sup>th</sup>, 2005

FIELD BOOK NO. 6 PAGE NO. 16

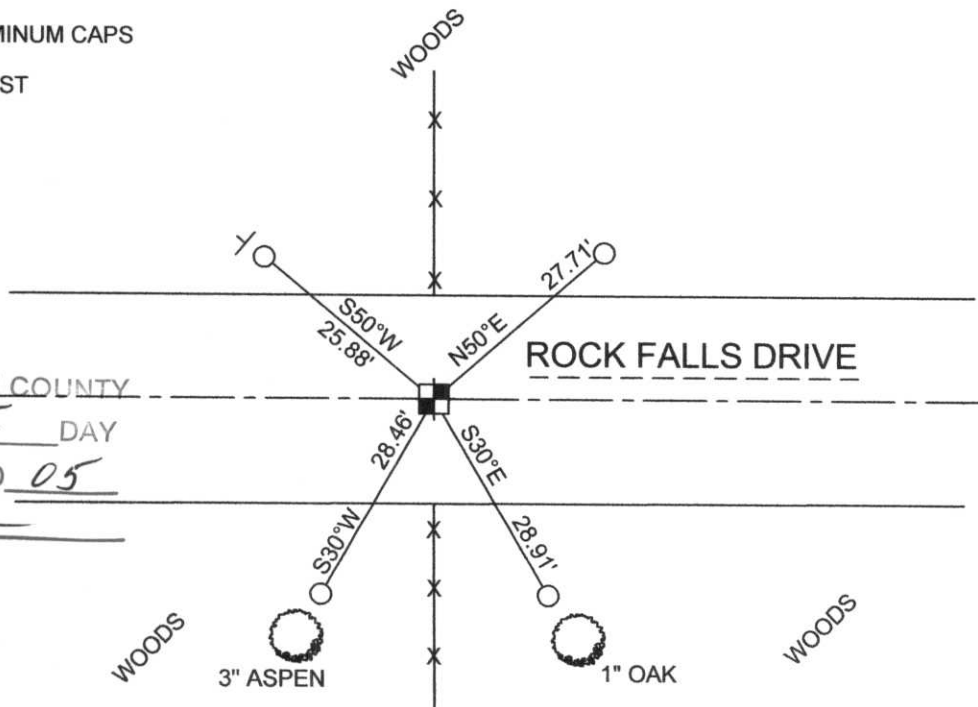
COMPANY RIVERSIDE LAND SURVEYING LLC

## TIE SKETCH: SHOW MINIMUM OF FOUR (4) HORIZONTAL TIE DISTANCES TO FIXED WITNESS MONUMENTS. DESCRIBE ALL MONUMENTS FOUND OR SET. CORRECT ALL DISTANCES SHOWN TO STANDARD TEMPERATURE OF 68° F.

- FOUND GRANITE STONE
- SET 3/4" REBAR WITH ALUMINUM CAPS
- VINYL SURVEY MARKER POST

NOTE

- ALL BEARINGS ARE FROM A HAND HELD MAGNETIC COMPASS
- THIS DRAWING IS NOT TO SCALE



RECEIVED BY LINCOLN COUNTY SURVEYOR THIS 19<sup>th</sup> DAY OF December 20 05  
*Tony Dahl*  
 COUNTY SURVEYOR

M-19

~~143367~~ 143367

14  
23