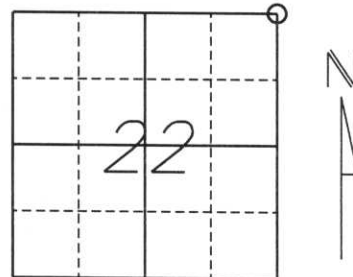


U.S. PUBLIC LAND SURVEY MONUMENT RECORD

Note: This form is intended and designed to fulfill all requirements of Wisconsin Administrative Code, Chapter A-E 5.02, U.S. Public Land Survey Monument Record (3) (a) (b) (c) (d) (e) (f) (g) (h) (i). An additional sheet may be added if necessary to conform with said requirements.

(a) Corner location: Township 33 North
 Range 6 East
 Town/City/Village ROCK FALLS
 County Lincoln



Section 22

(b) (f) (g) (h) Description of monument found at this corner and if it was accepted, state all evidence (material, testimonial, occupational, plats, records, other monuments) used as a basis for accepting. If not accepted or if nothing was found, state evidence used as a basis for establishing location. If reestablished through lost corner proportionate methods, indicate all monuments, distances and directions used to establish.

The original corner was established by Jackson L. Prentice in November, 1854.

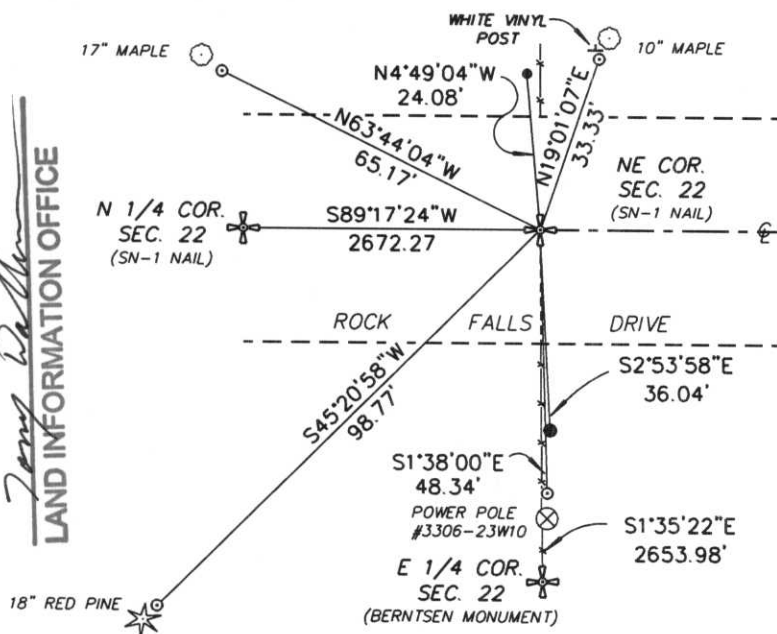
Original bearing trees:
 12" Maple S44°W, 65 lks.
 16" Maple S51°E, 100 lks.
 20" Maple N53°E, 27 lks.
 30" Maple N32°W, 40 lks.

Francis X. Fox (Fuchs) visited the site in April, 1943 and set a stone at the intersection of fencelines and centerline of road. Also offset irons North and South of road 24.75 feet from corner.

Found a 1" iron pipe 24.08 feet North of centerline of road and found a 1-1/4" iron pipe 36.04 feet South of centerline of road. Also found fencelines to the North and South. Set SN-1 Nail at intersection of fencelines and centerline. Set (4) 7/8" rebars with Lincoln County caps as ties to corner. Ties are set approx. 1 foot from bearing trees.

(c) (d) (e) Plan view of corner with ties to at least 4 witness monuments. If in disagreement with previously established corner, show the distances between the two corners and also indicate the ties to the disputed corner.

RECEIVED AT LINCOLN COUNTY
 COURTHOUSE THIS 12TH DAY
 OF November 20 01
 Land Information Office



- SET 7/8" REBAR WITH LINCOLN COUNTY CAPS APPROX. 1 FOOT FROM BEARING TREES.
- FOUND 1" IRON PIPE
- FOUND 1-1/4" IRON PIPE



(i) I, William W. Nutter RLS, S-2299
 (type or print name) certify that the corner location on this record was determined by me or under my direction and control and that this U.S. Public Land Survey Monument Record is correct and complete to the best of my knowledge and belief.

William W. Nutter 11-9-01
 Signature Date

Index No.

M-17









