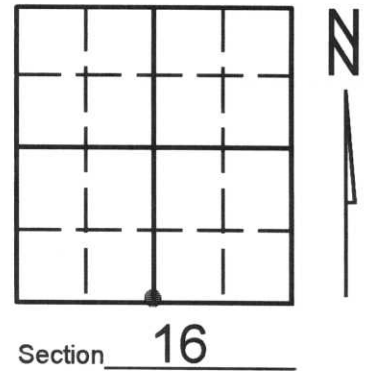


U.S. PUBLIC LAND SURVEY MONUMENT RECORD

Note: This form is intended and designed to fulfill all requirements of Wisconsin Administrative Code, Chapter A-E 7.08 U.S. Public Land Survey Monument Record (3)(a)(b)(c)(d)(e)(f)(g)(h)(i). An additional sheet may be added if necessary to conform with said requirements.

(a) Corner location: Township 33 North
 Range 06 East West

Town/City/Village ROCK FALLS
 County LINCOLN



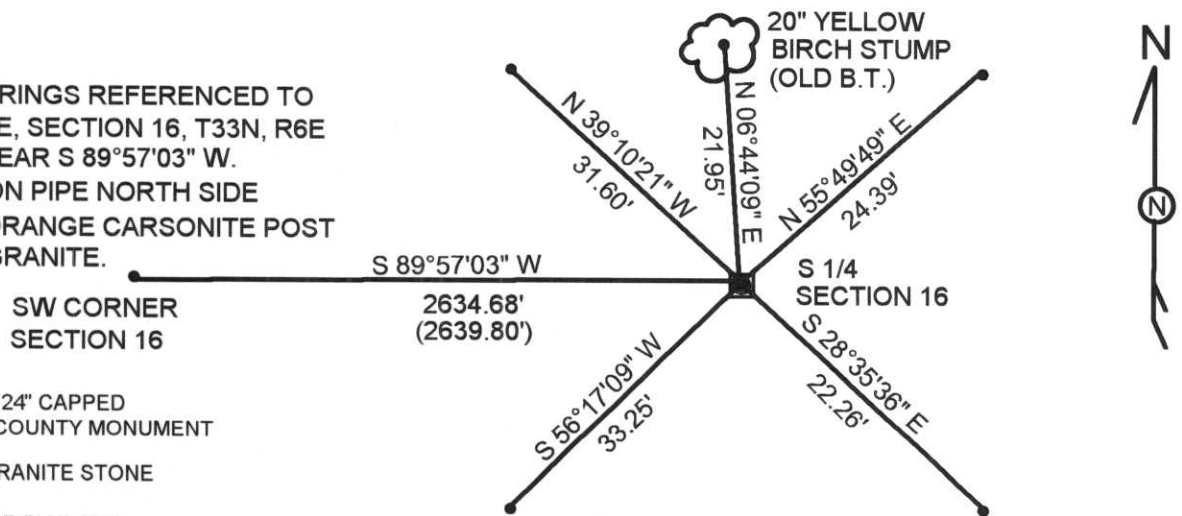
(b) (f) (g) (h) Description of monument found at this corner and if it was accepted, state all evidence (material, testimonial, occupational, plats, records, other monuments) used as a basis for accepting. If not accepted or if nothing was found, state evidence used as basis for establishing location. If reestablished through lost corner proportionate methods, indicate all monuments, distances and directions used to establish. Indicate type of monument found or set and sign post.

- ⁽¹⁸⁵⁴⁾ ORIG. GOVT. SURVEY - JACKSON L. PRENTICE SET 1/4 POST AND MADE B.T.'S: PINE 12" S19°W, 23 LINKS AND PINE 10" N12°W, 31 LINKS
- F. FOX - SET STONE AND MADE THE FOLLOWING B.T.s: 13" YELLOW BIRCH N 06°E, 22.60' AND 11" HEMLOCK, N 55°W, 26.80'
- 2000 - KEVIN BIXBY FOUND STONE AND WITNESSED AS SHOWN BELOW

(c) (d) (e) Plan view of corner with ties to at least 4 witness monuments. If in disagreement with previously established corner, show the distances between the two corners and also indicate the ties to the disputed corner.

NOTE: NO SCALE. BEARINGS REFERENCED TO THE SOUTH LINE, SECTION 16, T33N, R6E ASSUMED TO BEAR S 89°57'03" W. SET 1" X 24" IRON PIPE NORTH SIDE OF GRANITE. ORANGE CARSONITE POST 1.00' EAST OF GRANITE.

- SET 3/4" X 24" CAPPED LINCOLN COUNTY MONUMENT
- FOUND GRANITE STONE
- () MEASURED BY F. FOX



(i) I, KEVIN P. BIXBY
 (type or print name) certify that the corner location on this record was determined by me or under my direction and control and that this U.S. Public Land Survey Monument Record is correct and complete to the best of my knowledge and belief.



Kevin P. Bixby
 Signature 06/29/00
 Date

SHEET 1 OF 1
 Stamp

Index No. M-11









