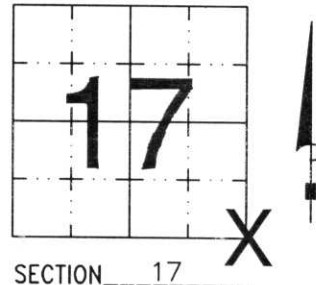


U.S. PUBLIC LAND SURVEY MONUMENT RECORD

NOTE: THIS FORM IS INTENDED AND DESIGNED TO FULFILL ALL REQUIREMENTS OF WISCONSIN ADMINISTRATIVE CODE, CHAPTER A-E 7.08 U.S. PUBLIC LAND SURVEY MONUMENT RECORD (3) (a) (b) (c) (d) (e) (f) (g) (h) (i). AN ADDITIONAL SHEET MAY BE ADDED IF NECESSARY TO CONFORM WITH SAID REQUIREMENTS.

(a) CORNER LOCATION: TOWNSHIP 33 NORTH
 RANGE 6 EAST/~~WEST~~
 TOWN/~~CITY/VILLAGE~~ ROCK FALLS
 COUNTY LINCOLN

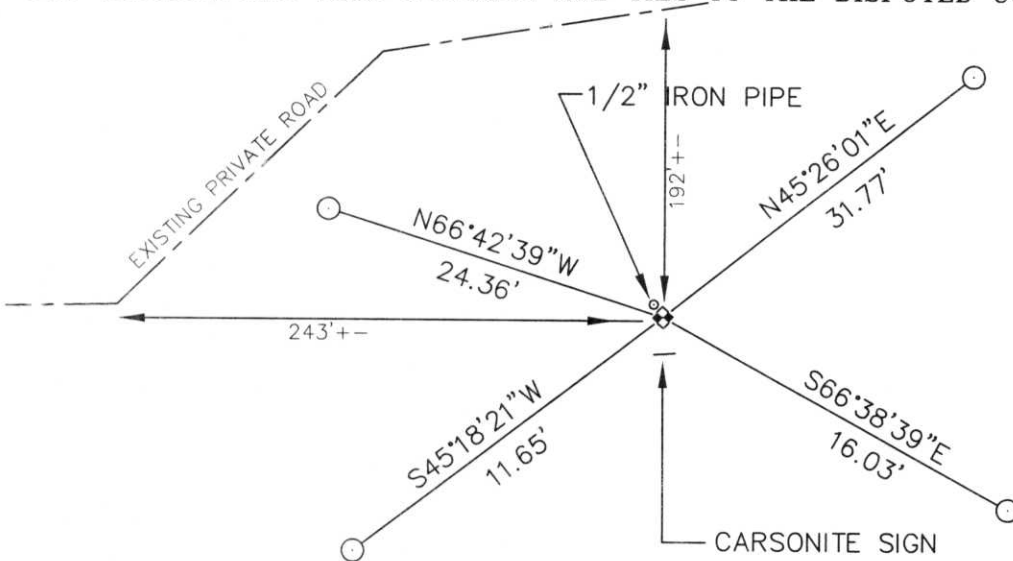


(b) (f) (g) (h) DESCRIPTION OF MONUMENT FOUND AT THIS CORNER AND IF IT WAS ACCEPTED, STATE ALL EVIDENCE (MATERIAL, TESTIMONIAL, OCCUPATIONAL, PLATS, RECORDS, OTHER MONUMENTS) USED AS BASIS FOR ACCEPTING. IF NOT ACCEPTED OR IF NOTHING WAS FOUND, STATE EVIDENCE USED AS BASIS FOR ESTABLISHING LOCATION. IF REESTABLISHED THROUGH LOST CORNER PROPORTIONATE METHODS, INDICATE ALL MONUMENTS, DISTANCES AND DIRECTIONS USED TO ESTABLISH. INDICATE TYPE OF MONUMENT FOUND OR SET AND SIGN POST.

MAP # 354 IN PROPERTY DESCRIPTION OFFICE IS REFERENCED TO THIS CORNER. CORNER IS NOT ON RECORD. DROVE NEAR CORNER, FOUND BLACK GRANITE 7" x 7" STONE, WITH POLISHED SURFACE, LARGE X ON TOP, WITH SECTION NUMBERS ETCHED ON TOP. FOUND ALUMINUM WITNESS MONUMENTS, CARSONITE SIGN ON SOUTH SIDE, 1/2" IRON AT NORTHWEST CORNER OF STONE.
 HELD AS CORNER, SHOT TIE DISTANCES WITH EDM.
 SEE SECTION SUMMARY ON BACK

**RECEIVED AT LINCOLN COUNTY
 COURTHOUSE THIS 28th DAY
 OF Oct. 19 99
Pat Priebe
 LAND INFORMATION OFFICE**

(c) (d) (e) PLAN VIEW OF CORNER WITH TIES TO AT LEAST 4 WITNESS MONUMENTS. IF IN DISAGREEMENT WITH PREVIOUSLY ESTABLISHED CORNER, SHOW THE DISTANCES BETWEEN THE TWO CORNERS AND ALSO INDICATE THE TIES TO THE DISPUTED CORNER.



ALL WITNESS CORNERS ARE LINCOLN COUNTY ALUMINUM CAPS, PAINTED ORANGE, FLUSH WITH GROUND.

(i) I, DAVID L. OSTERBRINK RLS
 (TYPE OR PRINT NAME) CERTIFY THAT THE CORNER LOCATION ON THIS RECORD WAS DETERMINED BY ME OR UNDER MY DIRECTION AND CONTROL AND THAT THIS U.S. PUBLIC LAND SURVEY MONUMENT RECORD IS CORRECT AND COMPLETE TO THE BEST OF MY KNOWLEDGE AND BELIEF.

David L. Osterbrink
 SIGNATURE 10-27-99
DATE



INDEX NO. M-9

E 1/4 CORNER SEC. 17-33-6
GRANITE STONE

RECEIVED AT LINCOLN COUNTY
COURTHOUSE THIS _____ DAY
OF _____ 19____
LAND INFORMATION OFFICE

N0°00'00"W 2647.10'

SE COR. SEC. 17-33-6
GRANITE STONE









