

U.S. PUBLIC LAND SURVEY MONUMENT RECORD

NOTE: THIS FORM IS INTENDED AND DESIGNED TO FULFILL ALL REQUIREMENTS OF WISCONSIN ADMINISTRATIVE CODE, CHAPTER LAND SURVEY MONUMENT RECORD (3) (a) (b) (c) (d) (e) (f) (g) (h) (i). AN ADDITIONAL SHEET MAY BE ADDED IF NECESSARY TO CONFORM WITH SAID REQUIREMENTS. A-E 7.00 U.S. PUBLIC

(a) CORNER LOCATION: TOWNSHIP ROCK FALLS NORTH
 RANGE 6 EAST/~~WEST~~
 TOWN/CITY/VILLAGE ROCK FALLS
 COUNTY LINCOLN



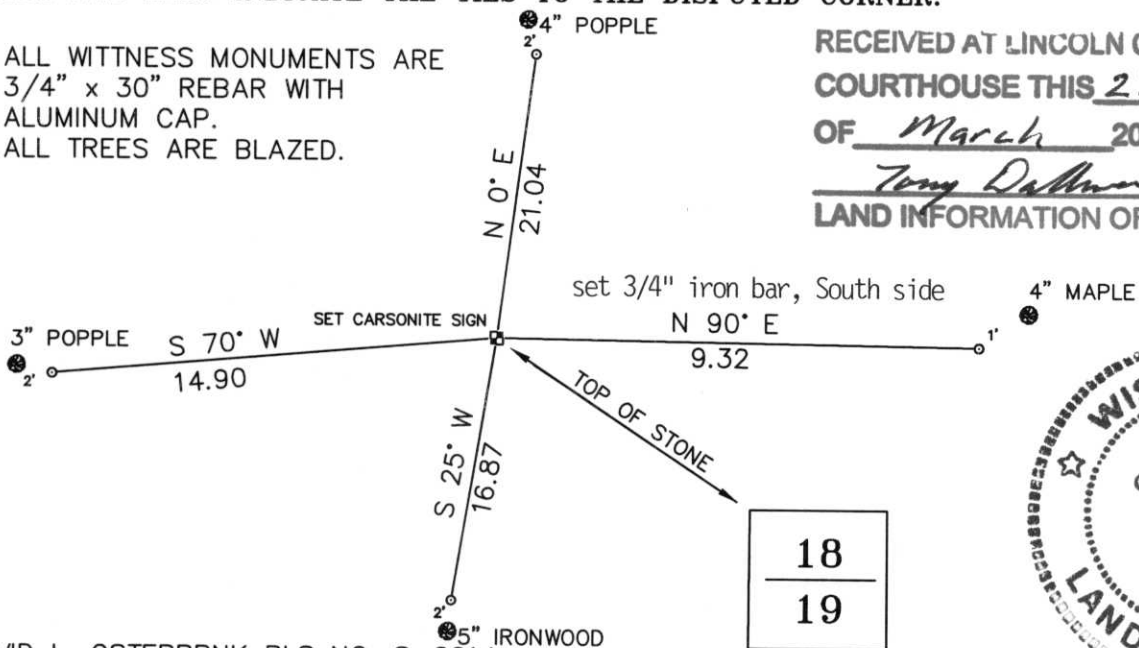
SECTION 19

(b) (f) (g) (h) DESCRIPTION OF MONUMENT FOUND AT THIS CORNER AND IF IT WAS ACCEPTED, STATE ALL EVIDENCE (MATERIAL, TESTIMONIAL, OCCUPATIONAL, PLATS, RECORDS, OTHER MONUMENTS) USED AS BASIS FOR ACCEPTING. IF NOT ACCEPTED OR IF NOTHING WAS FOUND, STATE EVIDENCE USED AS BASIS FOR ESTABLISHING LOCATION. IF REESTABLISHED THROUGH LOST CORNER PROPORTIONATE METHODS, INDICATE ALL MONUMENTS, DISTANCES AND DIRECTIONS USED TO ESTABLISH. INDICATE TYPE OF MONUMENT FOUND OR SET AND SIGN POST.

CORNER SET BY FRANCIS FOX. USING HIS SECTION SUMMARY, CALCULATED CORNER LOCATION. TRAVERSED INTO AREA, DUG THROUGH TWO FEET OF SNOW, FOUND 6" x 6" POLISHED, BLACK GRANITE STONE WITHIN 4 FEET OF CALCULATED DISTANCE. MONUMENT IS ONLY 18" LONG. IT WAS LEANING OVER, STRAIGHTENED STONE, TIED OUT. SET CARSONITE SIGN AT SE CORNER OF STONE. IT LOOKED LIKE LAND OWNERS DID NOT KNOW OF MONUMENTS LOCATION. THERE WERE NO RIBBON, DEER STANDS, NO TRESSPASSING SIGNS, FENCES, OR PAINT MARKS AROUND THE CORNER.

(c) (d) (e) PLAN VIEW OF CORNER WITH TIES TO AT LEAST 4 WITNESS MONUMENTS. IF IN DISAGREEMENT WITH PREVIOUSLY ESTABLISHED CORNER, SHOW THE DISTANCES BETWEEN THE TWO CORNERS AND ALSO INDICATE THE TIES TO THE DISPUTED CORNER.

ALL WITNESS MONUMENTS ARE 3/4" x 30" REBAR WITH ALUMINUM CAP. ALL TREES ARE BLAZED.



RECEIVED AT LINCOLN COUNTY COURTHOUSE THIS 27TH DAY OF March 20 01
Tony Dullman
 LAND INFORMATION OFFICE



INDEX NO. M-3

(i) I, DAVID L. OSTERBRINK RLS NO. S-2014
 (TYPE OR PRINT NAME) CERTIFY THAT THE CORNER LOCATION ON THIS RECORD WAS DETERMINED BY ME OR UNDER MY DIRECTION AND CONTROL AND THAT THIS U.S. PUBLIC LAND SURVEY MONUMENT RECORD IS CORRECT AND COMPLETE TO THE BEST OF MY KNOWLEDGE AND BELIEF.

David L. Osterbrink
 SIGNATURE _____ DATE 3-20-01

STAMP









