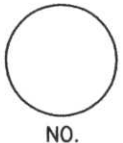


LINCOLN COUNTY U.S. PUBLIC LAND SURVEY MONUMENT LOCATION RECORD

CORNER NUMBER 143364
 SECTION 14
 TOWNSHIP 33 NORTH
 RANGE 6 EAST
 ROCK FALLS
 CITY, VILLAGE, TOWN



LANDMARK BENCHMARK _____
 CORNER IDENTITY: WEST 1/4 CORNER SECTION 14

FOUND
 SET
 RESET
 RE-TIED

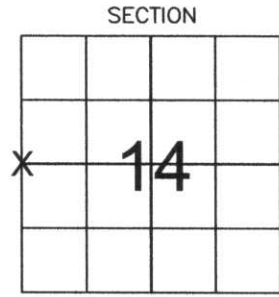
LINCOLN COUNTY COORDINATE: N: 182427.27
 E: 385933.50

ELEVATION--(FEET): _____ DATUM: _____

WEATHER: PARTLY CLOUDY

DATE OF SURVEY: 11-11-05 TEMPERATURE: 45 °F

SURVEY PARTY: NATHAN WINCENTSEN, KEITH WALKOWSKI



LOCATION (Indicated By X)



BASIS FOR MONUMENT LOCATION:
 (DESCRIBE METHOD OF SURVEY AND CORNER AUTHENTICATION)

FOUND SCRIBED GRAY GRANITE STONE IN MOUND OF ROCKS.
 ACCEPTED STONE AS CORNER AND PERPETUATED CORNER AS SHOWN BELOW.



CERTIFIED CORRECT:
Keith J. Walkowski
 Registered Land Surveyor
 DATE: Nov. 27th, 2005

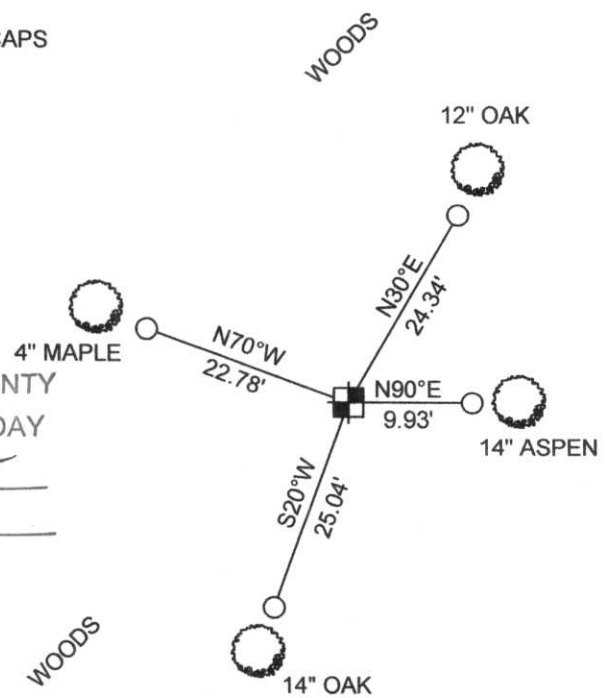
FIELD BOOK NO. 6 PAGE NO. 14
 COMPANY RIVERSIDE LAND SURVEYING LLC

TIE SKETCH: SHOW MINIMUM OF FOUR (4) HORIZONTAL TIE DISTANCES TO FIXED WITNESS MONUMENTS.
 DESCRIBE ALL MONUMENTS FOUND OR SET. CORRECT ALL DISTANCES SHOWN TO STANDARD TEMPERATURE OF 68° F.

- FOUND GRANITE STONE
- SET 3/4" REBAR WITH ALUMINUM CAPS
- VINYL SURVEY MARKER POST

NOTE

- ALL BEARINGS ARE FROM A HAND HELD MAGNETIC COMPASS
- THIS DRAWING IS NOT TO SCALE



RECEIVED BY LINCOLN COUNTY SURVEYOR THIS 13TH DAY OF December 2005
Tony Wall
 COUNTY SURVEYOR

K-17

143364

15114