

U.S. PUBLIC LAND SURVEY MONUMENT RECORD

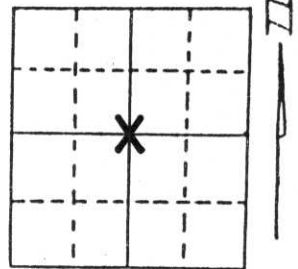
Note: This form is intended and designed to fulfill all requirements of Wisconsin Administrative Code, Chapter A-E 5.02, U.S. Public Land Survey Monument Record (3) (a) (b) (c) (d) (e) (f) (g) (h) (i). An additional sheet may be added if necessary to conform with said requirements.

(a) Corner location: Township 33 North

Range 6 East

Town/City/Village ROCK FALLS

County LINCOLN



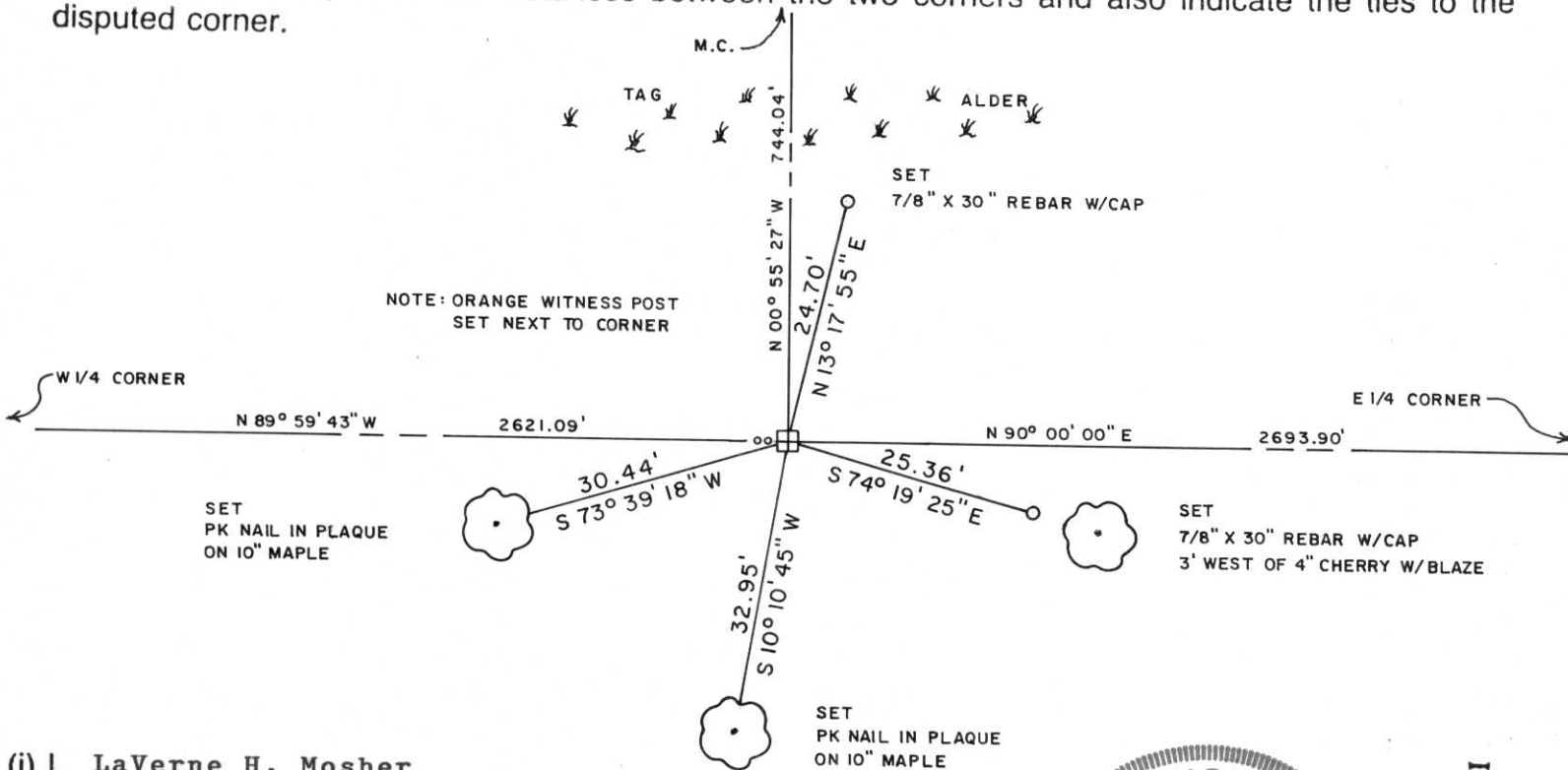
Section 16

(b) (f) (g) (h) Description of monument found at this corner and if it was accepted, state all evidence (material, testimonial, occupational, plats, records, other monuments) used as a basis for accepting. If not accepted or if nothing was found, state evidence used as basis for establishing location. If reestablished through lost corner proportionate methods, indicate all monuments, distances and directions used to establish.

Recovered intact a 7" x 7" black granite stone monument at corner. Also recovered 2 round pointed wood posts, the same being about 3 inches in diameter and 18 inches long buried along West side stone. Stone was marked C | 16 on top and was set by Francis X. Fox during resurvey of Rock Falls Township in 1941.

**RECEIVED AT LINCOLN COUNTY
COURTHOUSE THIS 17 DAY
OF May 1996
Pat Reile
TAX DESCRIPTION OFFICE**

(c) (d) (e) Plan view of corner with ties to at least 4 witness monuments. If in disagreement with previously established corner, show the distances between the two corners and also indicate the ties to the disputed corner.



(i) I, LaVerne H. Mosher

(type or print name) certify that the corner location on this record was determined by me or under my direction and control and that this U.S. Public Land Survey Monument Record is correct and complete to the best of my knowledge and belief.

LaVerne H. Mosher

May 15, 1996

Signature

Date



Index No. 2-11