

# U.S. PUBLIC LAND SURVEY MONUMENT RECORD

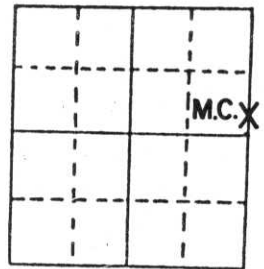
Note: This form is intended and designed to fulfill all requirements of Wisconsin Administrative Code, Chapter A-E 5.02, U.S. Public Land Survey Monument Record (3) (a) (b) (c) (d) (e) (f) (g) (h) (i). An additional sheet may be added if necessary to conform with said requirements.

(a) Corner location: Township 33 North

Range 6 East

Town/City/Village ROCK FALLS

County LINCOLN

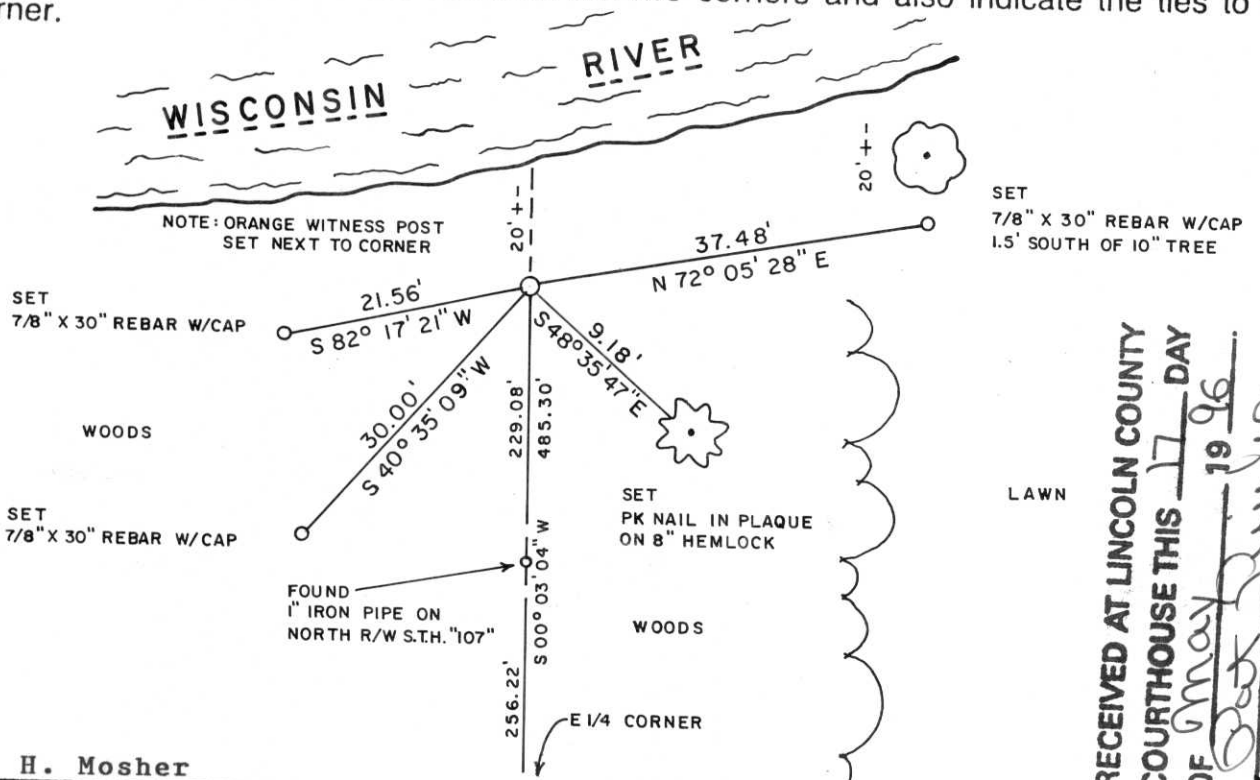


Section 16

(b) (f) (g) (h) Description of monument found at this corner and if it was accepted, state all evidence (material, testimonial, occupational, plats, records, other monuments) used as a basis for accepting. If not accepted or if nothing was found, state evidence used as basis for establishing location. If reestablished through lost corner proportionate methods, indicate all monuments, distances and directions used to establish.

The original meander corner and cedar bearing tree were recovered in 1941 by Francis X. Fox during resurvey of Rock Falls Township. His notes do not reflect that he replaced M.C. with other monumentation. Area where Fox found M.C. has been eroded by high water flows of Wisconsin River. Neither bearing tree nor corner were recovered during our survey on May 14, 1996. An old 1" iron pipe was found on the North R/W of S.T.H. 107 and a large 8" Spike recovered in the ground alongside the rotted remains of a pointed piece of wood also found in the ground. Spike, pipe and Stone monument found at the East 1/4 corner formed a straight line which coincided with line of occupation in area, so line accepted as best evidence of Section line. A standard Lincoln County Berntsen Monument was set at point where spike/post was recovered such that top of monument protrudes about 1" above ground. Later recovery of an old 1" iron pipe on South R/W line of S.T.H. 107 that closely fit the line from the E 1/4 corner to the newly established M.C. reaffirmed the correctness of our line determination.

(c) (d) (e) Plan view of corner with ties to at least 4 witness monuments. If in disagreement with previously established corner, show the distances between the two corners and also indicate the ties to the disputed corner.



(i) I, LaVerne H. Mosher  
 (type or print name) certify that the corner location on this record was determined by me or under my direction and control and that this U.S. Public Land Survey Monument Record is correct and complete to the best of my knowledge and belief.

LaVerne H. Mosher  
 Signature

May 16, 1996  
 Date



RECEIVED AT LINCOLN COUNTY  
 COURTHOUSE THIS 17 DAY  
 OF May 1996  
 [Signature]  
 TAX DESCRIPTION OFFICE

No. 1-1000-13





































ONE YEAR PENALTY FOR DISTURBING  
LINCOLN COUNTY  
MARKER  
M.C.



SM  
UR  
VE  
YR













