

# U.S. PUBLIC LAND SURVEY MONUMENT RECORD

NOTE: THIS FORM IS INTENDED AND DESIGNED TO FULFILL ALL REQUIREMENTS OF WISCONSIN ADMINISTRATIVE CODE, CHAPTER A-E 7.08, U.S. PUBLIC LAND SURVEY MONUMENT RECORD (3)(a)(b)(c)(d)(e)(f)(g)(h)(i). ADDITIONAL SHEETS MAY BE NECESSARY TO CONFORM TO SAID REQUIREMENTS.

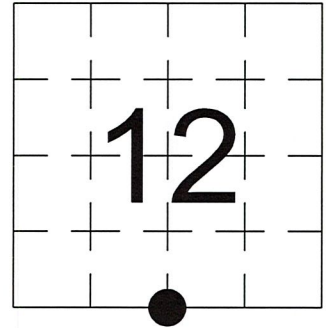
T 33 N, R 6 E

**(a) CORNER LOCATION:**

SOUTH 1/4 CORNER, SECTION 12  
 TOWNSHIP 33 NORTH  
 RANGE 6 EAST  
 TOWN OF ROCK FALLS  
 LINCOLN COUNTY  
 WISCONSIN

**(b) HISTORY OF ORIGINAL CORNER:**

ORIGINAL SURVEYOR: See Previous Tie Sheet  
 COMMENCING DATE:  
 COMPLETION DATE:  
 ORIGINAL BEARING TREES:



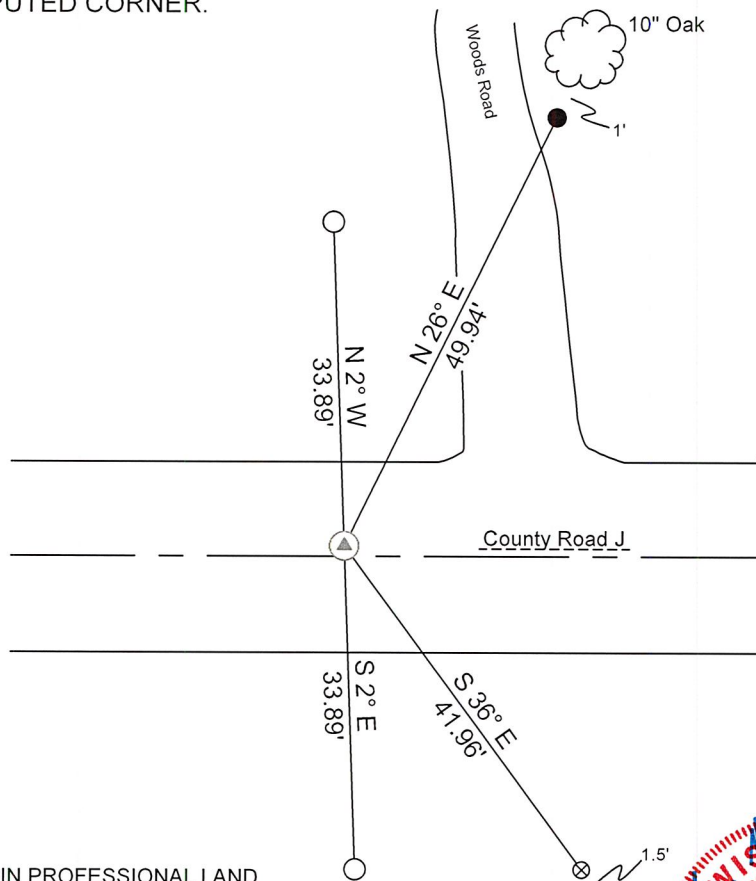
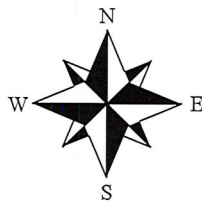
**(f)(g)(h) DESCRIPTION OF MONUMENT FOUND AT THIS CORNER AND IF IT WAS ACCEPTED. STATE ALL EVIDENCE (MATERIAL, TESTIMONIAL, OCCUPATIONAL, PLATS, RECORDS, OTHER MONUMENTS) USED AS A BASIS FOR ESTABLISHING LOCATION. IF RE-ESTABLISHING THROUGH LOST CORNER PROPORTIONATE METHODS, INDICATE ALL MONUMENTS, DISTANCES, AND DIRECTIONS USED TO ESTABLISH. INDICATE TYPE OF MONUMENTS FOUND OR SET.**

1961, P.M. Johnson, set 2 Iron Witness Posts.

11/13/2023, I, Anthony R. Dallman, PLS-2405, found both Iron Witness Posts and set an SNM-1 Berntsen Monument, at midpoint between them, 1' North of centerline. I accepted this location and set witness monuments, as shown in the sketch below, to further perpetuate the corner location.

**(c)(d)(e) PLAN VIEW OF THE CORNER WITH TIES TO AT LEAST FOUR WITNESSES. IF IN DISAGREEMENT WITH PREVIOUSLY ESTABLISHED CORNER, SHOW THE DISTANCES BETWEEN THE TWO CORNERS AND ALSO THE TIES TO THE DISPUTED CORNER.**

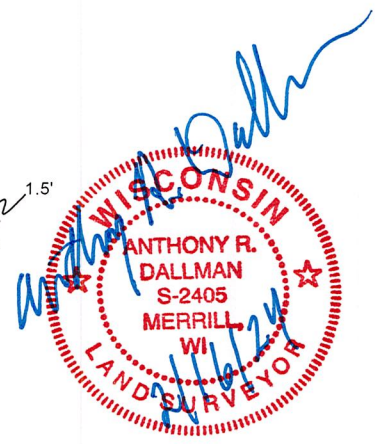
- Tie bearings by hand-held compass.
- Tie distances by steel tape.
- Not to scale.



- ⊗ - Found 7/8" Capped Rebar
- - 2" O.D. Iron Pipe (Existing)
- - Set 3/4" Capped Rebar
- ⊥ - Carsonite Post

I, ANTHONY R. DALLMAN, WISCONSIN PROFESSIONAL LAND SURVEYOR, S-2405, HEREBY CERTIFY THAT THE CORNER LOCATION ON THIS RECORD WAS REFERENCED BY ME OR UNDER MY DIRECTION AND CONTROL AND THAT THIS U.S. PUBLIC LAND SURVEY MONUMENT RECORD IS COMPLETE TO THE BEST OF MY KNOWLEDGE AND BELIEF.

*Anthony R. Dallman* 02/16/24  
 ANTHONY R. DALLMAN, PLS S-2405



INDEX NO. I-23

43306120020

43306120020\_Mon-N



43306120020\_North



**43306120020\_West**



43306120020\_South

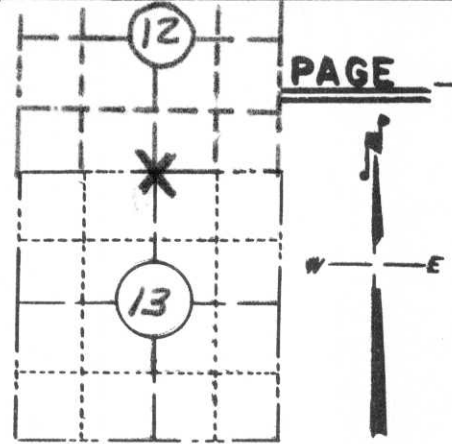


43306120020\_East

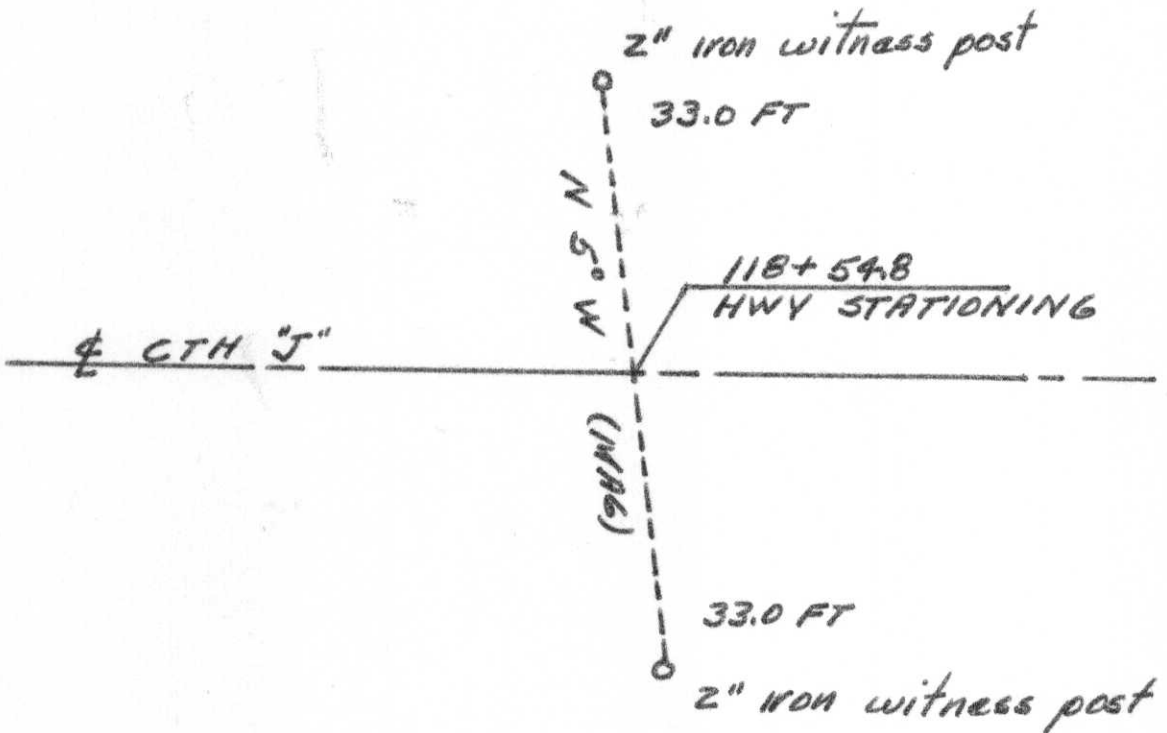


# PRESERVATION OF LANDMARKS

SECTION 59,635(7) WISCONSIN STATUTES  
 COUNTY LINCOLN  
 TOWN ROCK FALLS  
 HIGHWAY CTH "J"  
 SECTION NOS 12 & 13  
 T. 33 N., R. 6 E.  
 TYPE OF LANDMARK 1/4 CORNER  
 LOCATION INDICATED ON SKETCH X



LOCATION SKETCH



This space for copy of field notes or ties to the above described landmarks

Field notes or records filed in book no. Form 710 on file  
 at the W.H.C., Dist. No. 7 office.  
 City of Rhinalandar, Onaida County,  
 Located or established by P M Johnson, 1961  
 Title Engineer II

County Clerk's Office \_\_\_\_\_ County, Wis. }<sup>ss</sup>  
 Received for record \_\_\_\_\_, 19\_\_\_\_

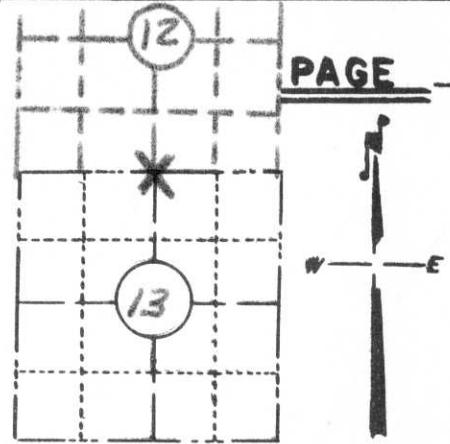
Copy sent to County Surveyor \_\_\_\_\_, 19\_\_\_\_

County Clerk

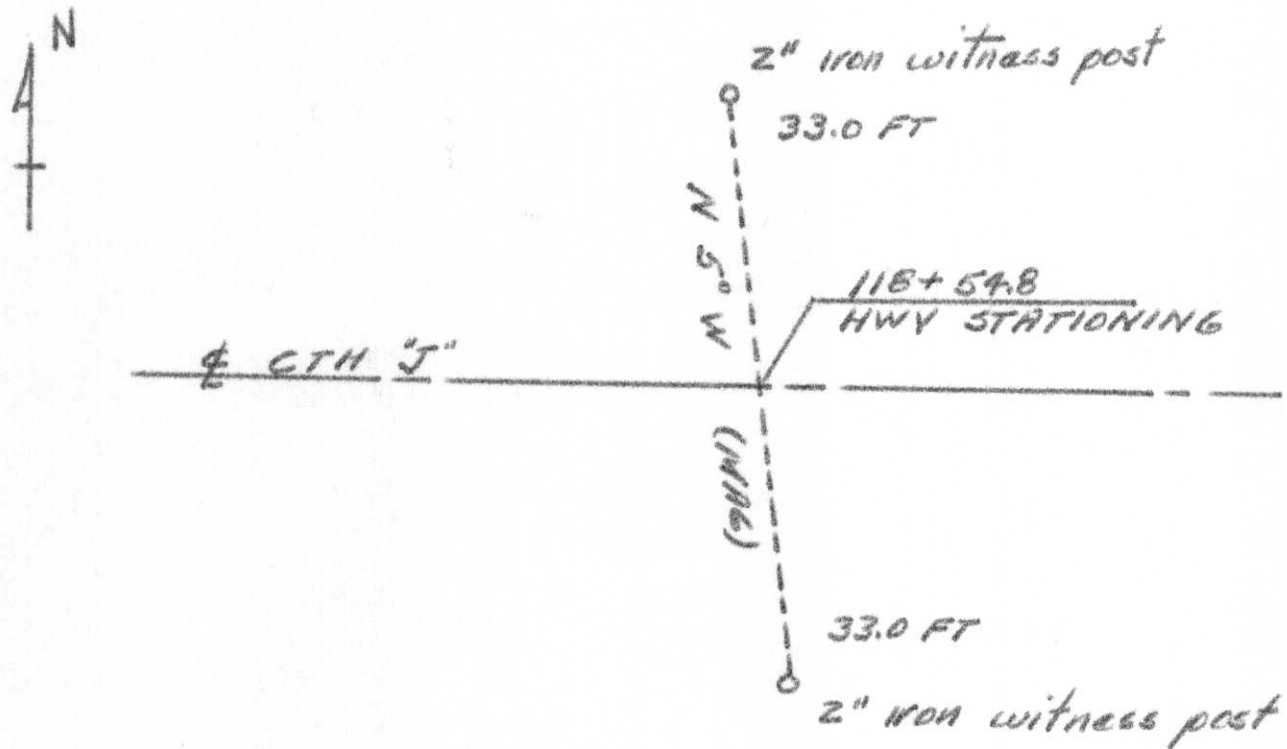
Index No. I-23

# PRESERVATION OF LANDMARKS

SECTION 59,635(7) WISCONSIN STATUTES  
 COUNTY LINCOLN  
 TOWN ROCK FALLS  
 HIGHWAY CTH 'J'  
 SECTION NOS 12 & 13  
 T. 33 N., R. 6 E.  
 TYPE OF LANDMARK 1/4 CORNER  
 LOCATION INDICATED ON SKETCH X



LOCATION SKETCH



This space for copy of field notes or ties to the above described landmarks

Field notes or records filed in book no. Form 710 on file  
 at the W.H.C., Dist. No. 7 office.  
 City of Rhinalandar, Oneida County,  
 Located or established by P M Johnson, 1961  
 Title Engineer II

County Clerk's Office \_\_\_\_\_ County, Wis. }<sup>ss</sup>  
 Received for record \_\_\_\_\_, 19\_\_\_\_

Copy sent to County Surveyor \_\_\_\_\_, 19\_\_\_\_

County Clerk

Index No. I-23



# PRESERVATION OF LANDMARKS

SECTION 59,635(7) WISCONSIN STATUTES  
COUNTY LINCOLN

TOWN ROCK FALLS

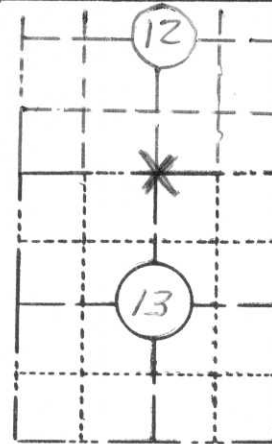
HIGHWAY CTH "J"

SECTION NO. 5 12 & 13

T. 33 N., R. 6 E.

TYPE OF LANDMARK 1/4 CORNER

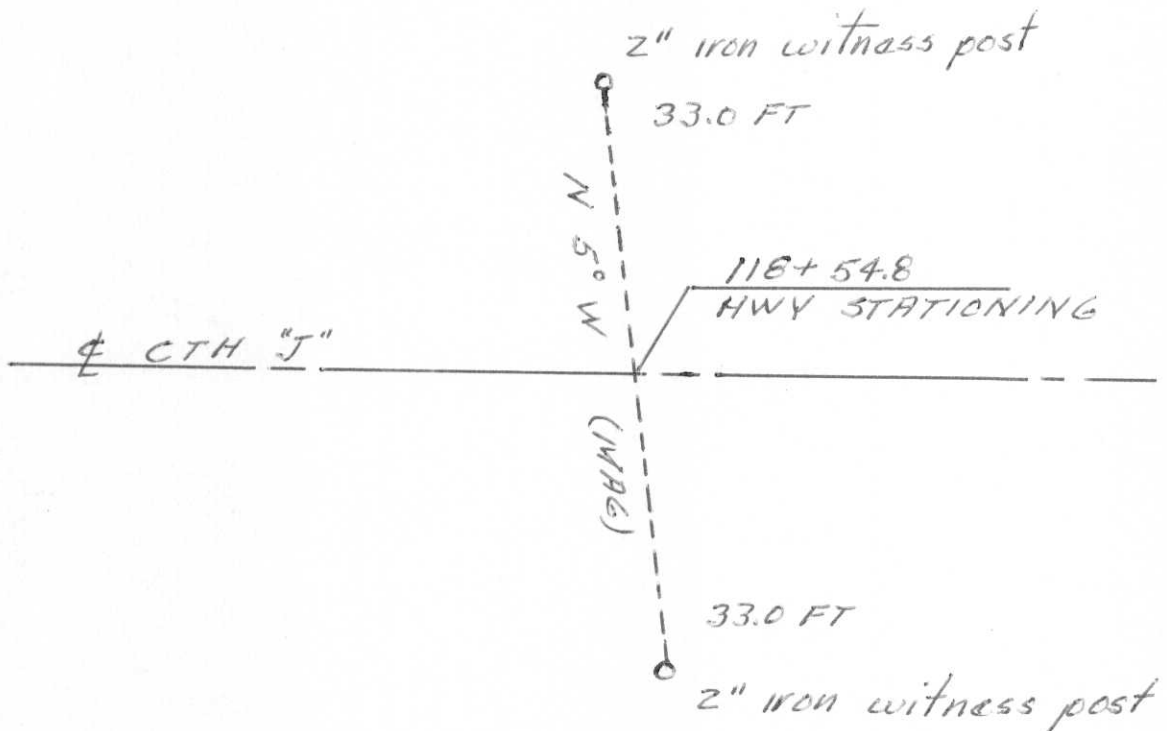
LOCATION INDICATED ON SKETCH X



PAGE \_\_\_\_\_



LOCATION SKETCH



This space for copy of field notes or ties to the above described landmarks

Field notes or records filed in book no. Form 710 on file

at the W.H.C., Dist. No. 7 office.

City of Rhinelandar, Onaida County.

Located or established by P M Johnson, 1961

Title Engineer II

County Clerk's Office \_\_\_\_\_ County, Wis. } ss

Received for record \_\_\_\_\_, 19\_\_\_\_

Copy sent to County Surveyor \_\_\_\_\_, 19\_\_\_\_

County Clerk

Index No.

I-23









