

Attachment to Tie Sheet I-21, T33N, R6E

43306110000

I visited the corner on 5/01/2019 to verify the corner and reference tie monumentation before County Road work. I found all 4 ties from the David Lemke tie sheet (5/30/1997) but no surface monument. All 4 ties cross well and agree with established Coordinates.

Anthony R. Dallman 8/22/19

Anthony R. Dallman, PLS-2405

Lincoln County Surveyor



U.S. PUBLIC LAND SURVEY MONUMENT RECORD

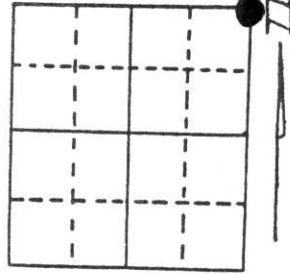
Note: This form is intended and designed to fulfill all requirements of Wisconsin Administrative Code, Chapter A-E 5.02, U.S. Public Land Survey Monument Record (3) (a) (b) (c) (d) (e) (f) (g) (h) (i). An additional sheet may be added if necessary to conform with said requirements.

(a) Corner location: Township 33 North

Range 6 East

Town/City/Village TN. OF ROCK FALLS

County LINCOLN



Section 14

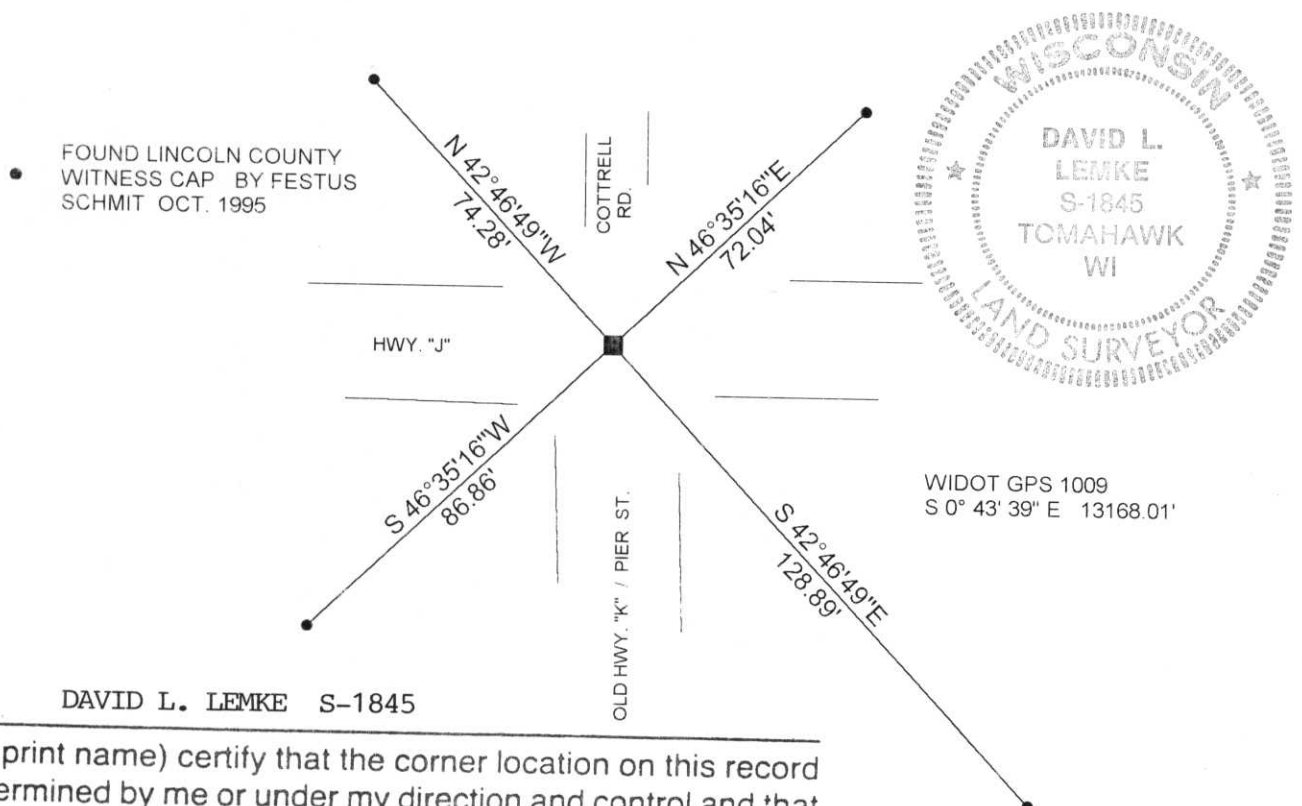
(b) (f) (g) (h) Description of monument found at this corner and if it was accepted, state all evidence (material, testimonial, occupational, plats, records, other monuments) used as a basis for accepting. If not accepted or if nothing was found, state evidence used as basis for establishing location. If reestablished through lost corner proportionate methods, indicate all monuments, distances and directions used to establish.

CORNER HISTORY ON FILE IN COUNTY SURVEYORS OFFICE

NOVEMBER 1995 FESTUS SCHMIT RECOVERED STONE ON INTERSECTION OF THEN HWY. "K" & PRESENT HWY. "J". ESTABLISHED 4 WITNESS TIES.

APRIL 1997 I FOUND ALL 4 WITNESS CAPS SET BY SCHMIT. DISTANCES CHECKED.

(c) (d) (e) Plan view of corner with ties to at least 4 witness monuments. If in disagreement with previously established corner, show the distances between the two corners and also indicate the ties to the disputed corner.



WIDOT GPS 1009
S 0° 43' 39" E 13168.01'

(i) I, DAVID L. LEMKE S-1845
(type or print name) certify that the corner location on this record was determined by me or under my direction and control and that this U.S. Public Land Survey Monument Record is correct and complete to the best of my knowledge and belief.

David L. Lemke
Signature

MAY 30 1997
Date

RECEIVED AT LINCOLN COUNTY
COURTHOUSE THIS 2nd DAY
OF June 1997
Pat Prisher
TAX DESCRIPTION OFFICE

Index No. I-21

U.S. PUBLIC LAND SURVEY MONUMENT RECORD

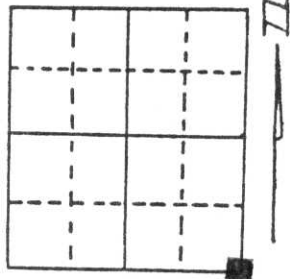
Note: This form is intended and designed to fulfill all requirements of Wisconsin Administrative Code, Chapter A-E 5.02, U.S. Public Land Survey Monument Record (3) (a) (b) (c) (d) (e) (f) (g) (h) (i). An additional sheet may be added if necessary to conform with said requirements.

(a) Corner location: Township 33 North

Range 6 East

Town/City/Village Rock Falls

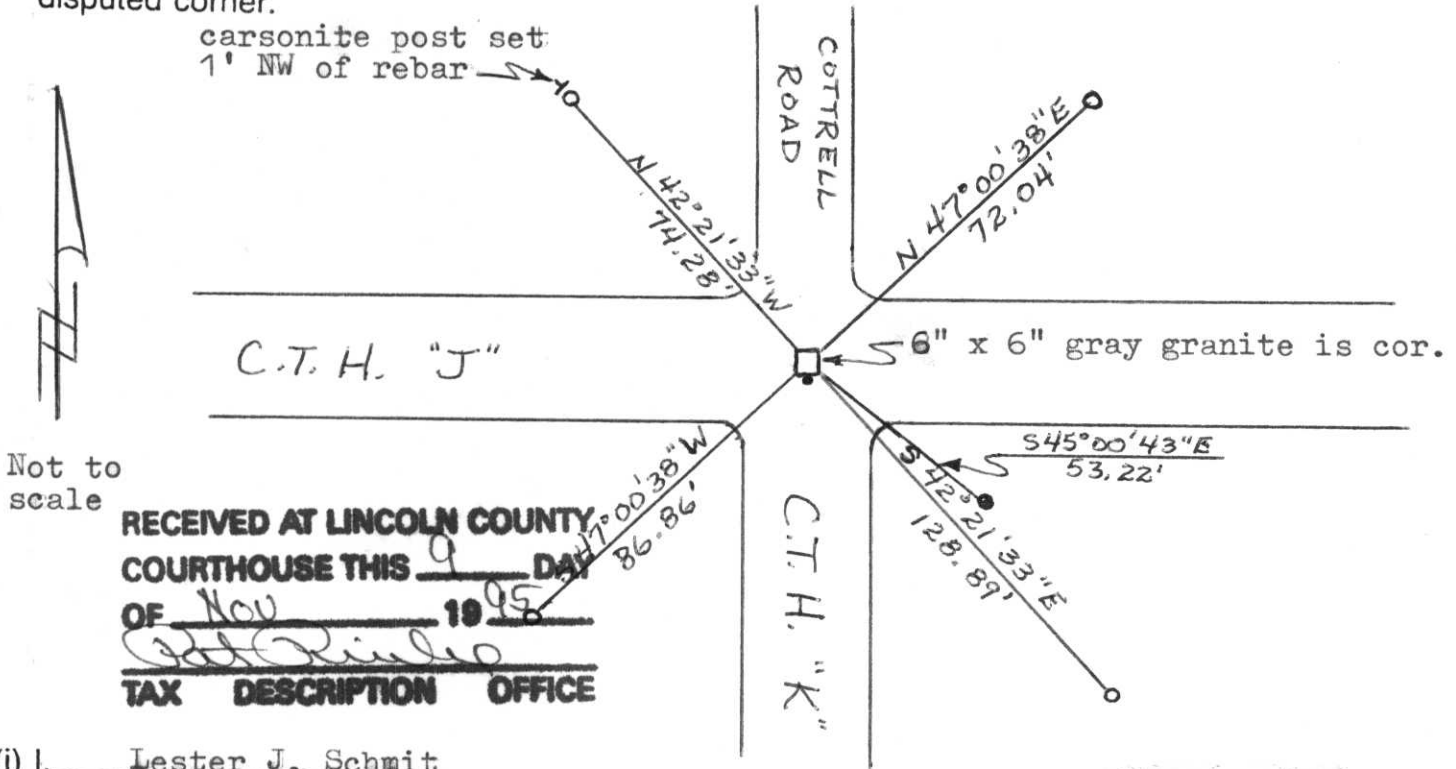
County Lincoln



Section 11

(b) (f) (g) (h) Description of monument found at this corner and if it was accepted, state all evidence (material, testimonial, occupational, plats, records, other monuments) used as a basis for accepting. If not accepted or if nothing was found, state evidence used as basis for establishing location. If reestablished through lost corner proportionate methods, indicate all monuments, distances and directions used to establish. Original Gov't. Survey: Oct. 1854 by Jackson L. Prentice, set wood post for corner with bearings, tamarck 12 S 74° W 31 links, pine 10 S 50° E 11 links, tamarck 8 N 48° W 38 links & maple 8 N 47° E 21 links. On a survey by Francis Fox for the Town of Rock Falls in the 1930's, he set a stone at intersection of roads, offset irons S 45° W 50' & N 45° E 25'. On a dig by the County grade-all on 31 Oct 95, a 6" x 6" gray granite with a cut smooth top and section numbers chiseled on top was found 4.0' below the surface of C.T.H. "J" and at the intersection of the centre-lines of C.T.H. "J", "K" and Cottrell Road. I set a 5/8" iron rod on the south side of the stone for location purposes only. I found a 1 3/4" pointed iron pin (shaft) 41" long, S 45°00'43" E 53.22' from the stone & a 5" dia. green wood post 1' SE of the pin. I referenced the corner with 7/8" capped iron rebars as shown below.

(c) (d) (e) Plan view of corner with ties to at least 4 witness monuments. If in disagreement with previously established corner, show the distances between the two corners and also indicate the ties to the disputed corner.



RECEIVED AT LINCOLN COUNTY COURTHOUSE THIS 9 DAY OF Nov 1995
TAX DESCRIPTION OFFICE

(i) I, Lester J. Schmit (type or print name) certify that the corner location on this record was determined by me or under my direction and control and that this U.S. Public Land Survey Monument Record is correct and complete to the best of my knowledge and belief.

Signature: Lester J. Schmit Date: 3 Nov 95

