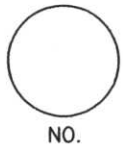


# LINCOLN COUNTY U.S. PUBLIC LAND SURVEY MONUMENT LOCATION RECORD

CORNER NUMBER 143361  
 SECTION 14  
 TOWNSHIP 33 NORTH  
 RANGE 6 EAST

ROCK FALLS  
 CITY, VILLAGE, TOWN



LANDMARK       BENCHMARK  
 FOUND  SET   
 RESET   
 RE-TIED

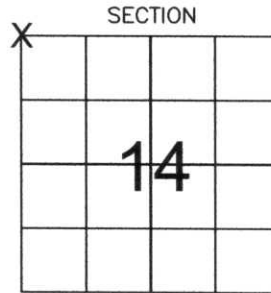
CORNER IDENTITY: NORTHWEST CORNER SECTION 14  
 LINCOLN COUNTY COORDINATE: N: 185093.02  
 E: 385941.69

ELEVATION--(FEET): \_\_\_\_\_ DATUM: \_\_\_\_\_

WEATHER: PARTLY CLOUDY

DATE OF SURVEY: 10-28-05 TEMPERATURE: 45 °F

SURVEY PARTY: NATHAN WINCENTSEN, KEITH WALKOWSKI



LOCATION (Indicated By X)



**BASIS FOR MONUMENT LOCATION:**  
 (DESCRIBE METHOD OF SURVEY AND CORNER AUTHENTICATION)

DUG FOR NORTHWEST CORNER BY HAND. FOUND SCRIBED GRANITE STONE ±2' BELOW ROAD GRADE. ACCEPTED STONE AS CORNER AND PERPETUATED CORNER LOCATION AS SHOWN BELOW.



CERTIFIED CORRECT:  
Keith J. Walkowski  
 Registered Land Surveyor  
 DATE: Nov. 27th, 2005

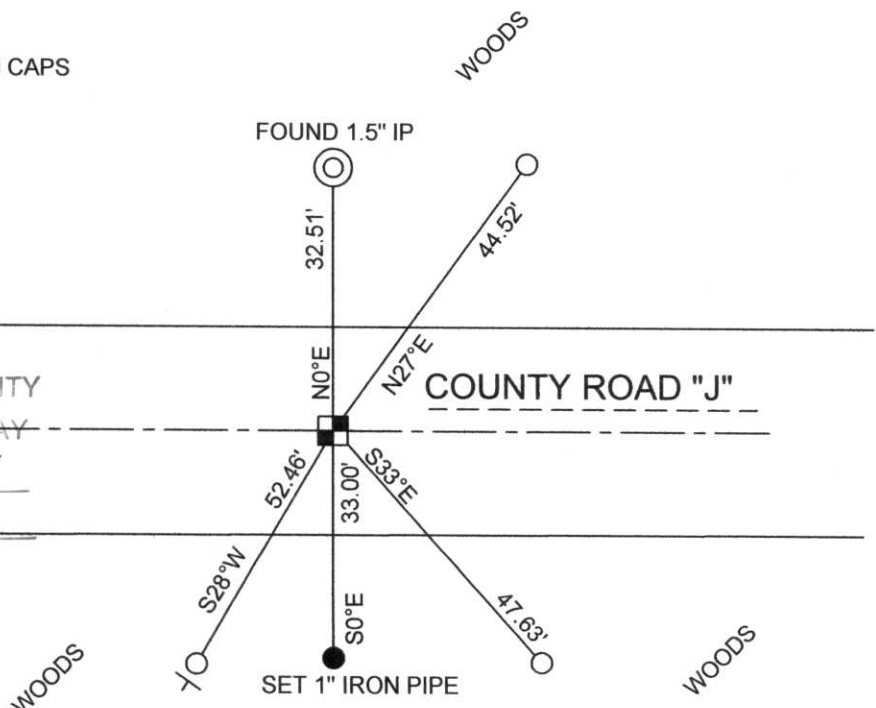
FIELD BOOK NO. 6 PAGE NO. 12  
 COMPANY RIVERSIDE LAND SURVEYING LLC

**TIE SKETCH:** SHOW MINIMUM OF FOUR (4) HORIZONTAL TIE DISTANCES TO FIXED WITNESS MONUMENTS. DESCRIBE ALL MONUMENTS FOUND OR SET. CORRECT ALL DISTANCES SHOWN TO STANDARD TEMPERATURE OF 68° F.

- FOUND GRANITE STONE
- FOUND 3/4" REBAR WITH ALUMINUM CAPS
- VINYL SURVEY MARKER POST

**NOTE**

- ALL BEARINGS ARE FROM A HAND HELD MAGNETIC COMPASS
- THIS DRAWING IS NOT TO SCALE

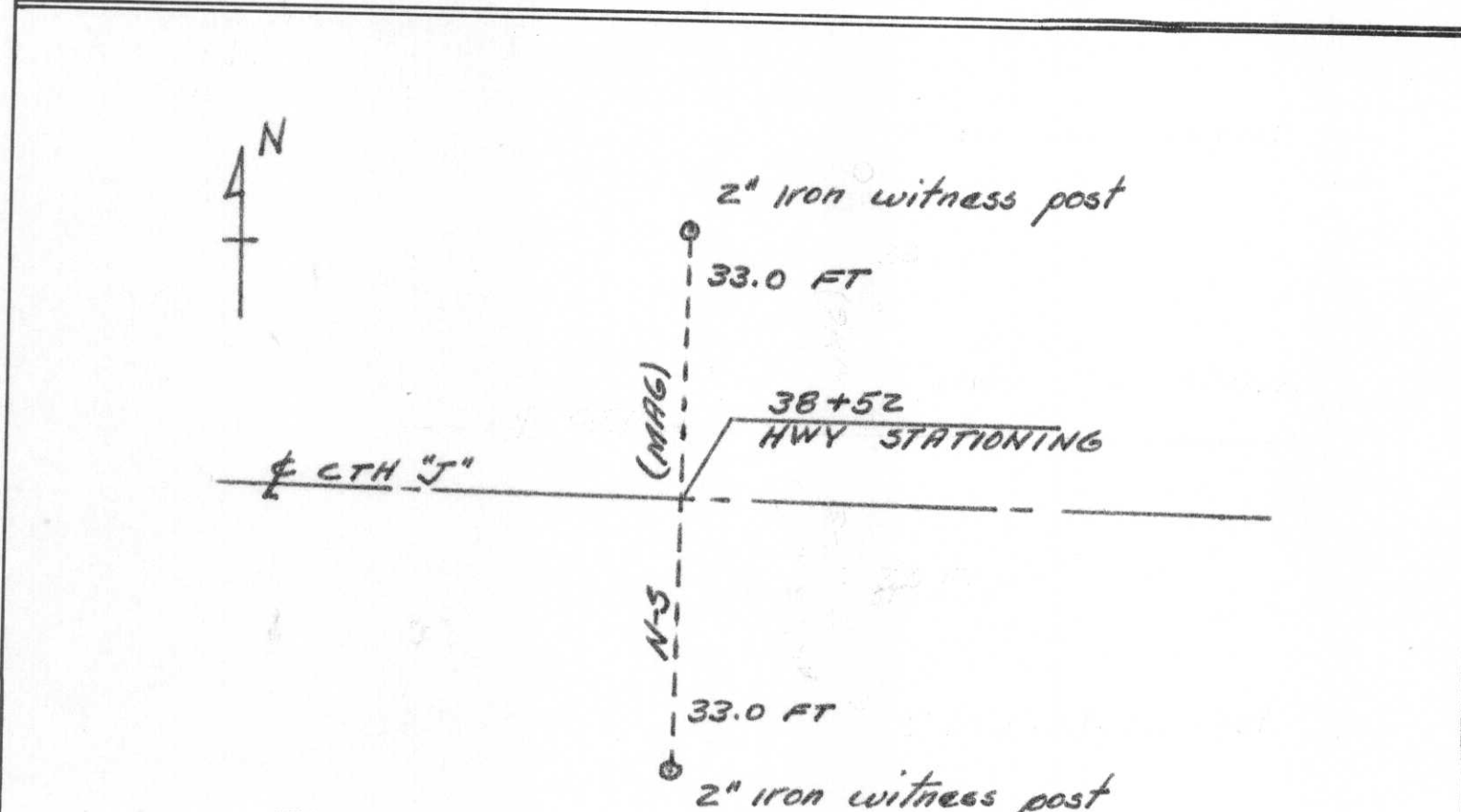
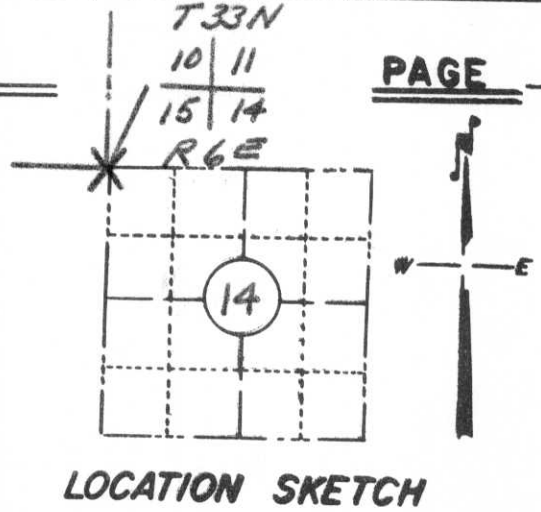


RECEIVED BY LINCOLN COUNTY SURVEYOR THIS 13<sup>th</sup> DAY OF December 20 05  
Tony Dull  
 COUNTY SURVEYOR

I-17

# PRESERVATION OF LANDMARKS

SECTION 59,635(7) WISCONSIN STATUTES  
 COUNTY LINCOLN  
 TOWN ROCK FALLS  
 HIGHWAY C.T.H. "J"  
 SECTION NOS. 10-11 & 15-14  
 T. 33 N., R. 6 E.  
 TYPE OF LANDMARK SEC. CORNER  
 LOCATION INDICATED ON SKETCH X



This space for copy of field notes or ties to the above described landmarks

Field notes or records filed in book no. Form 710 on file  
 at the WHC, Dist No 7 office.  
 City of Rhineland, Onaida County.  
 Located or established by PM Johnson, 1961  
 Title Engineer II

County Clerk's Office \_\_\_\_\_ County, Wis. } ss  
 Received for record \_\_\_\_\_, 19\_\_\_\_

Copy sent to County Surveyor \_\_\_\_\_, 19\_\_\_\_

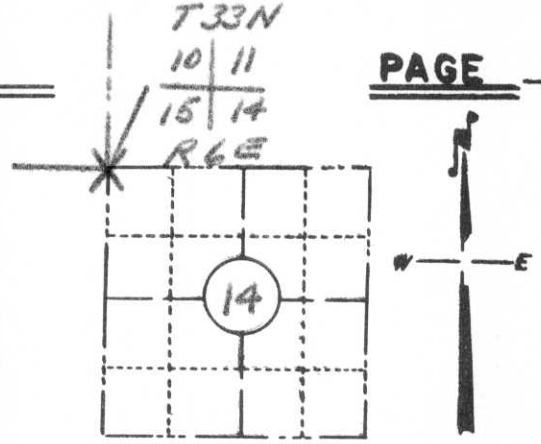
County Clerk

Index No. I-17

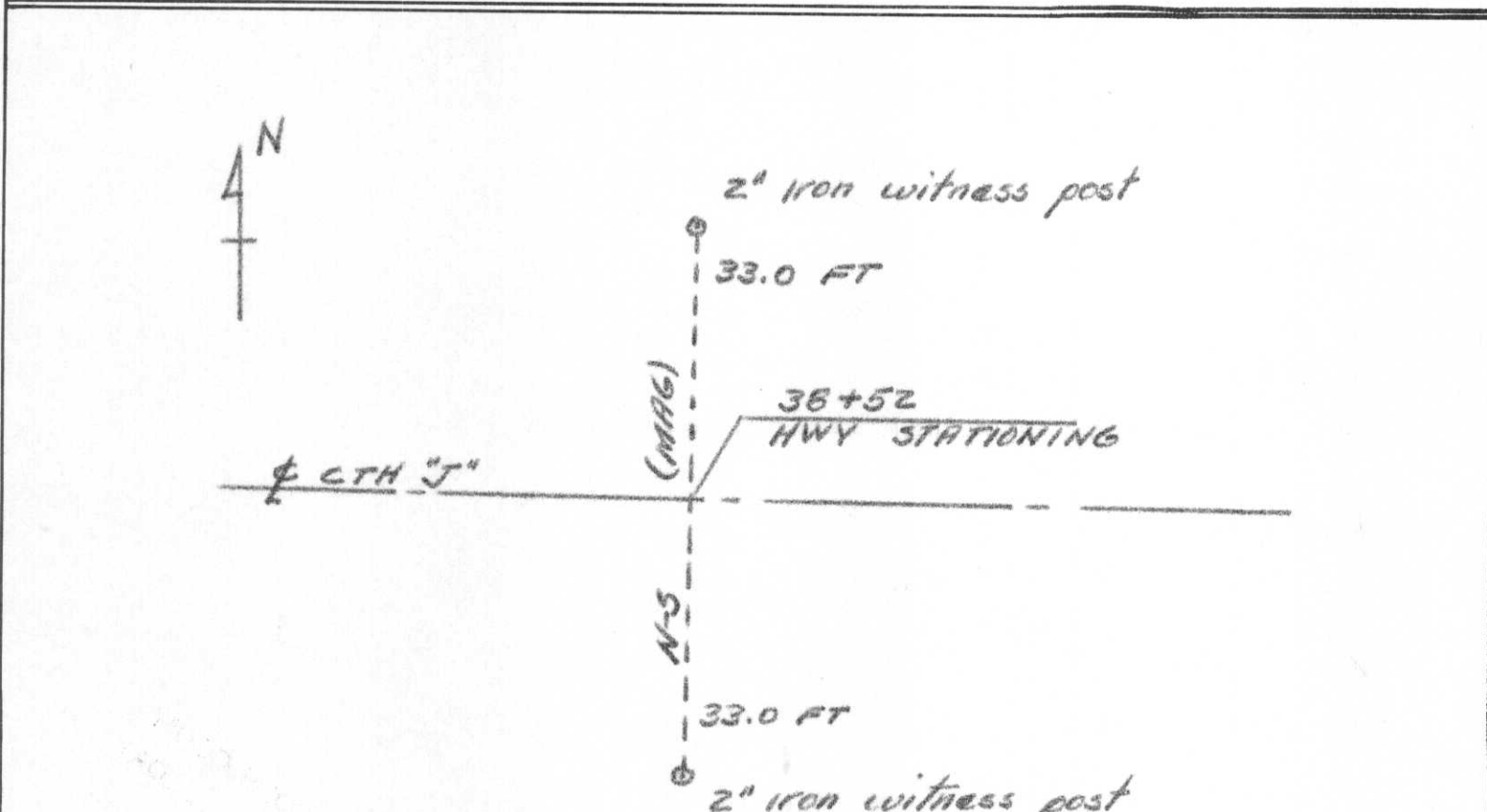
# PRESERVATION OF LANDMARKS

PAGE \_\_\_\_\_

SECTION 59,635(7) WISCONSIN STATUTES  
 COUNTY LINCOLN  
 TOWN ROCK FALLS  
 HIGHWAY C.T.H. "J"  
 SECTION NOS 10-11 & 15-14  
 T. 33 N., R. 6 E.  
 TYPE OF LANDMARK SEC. CORNER  
 LOCATION INDICATED ON SKETCH X



LOCATION SKETCH



This space for copy of field notes or ties to the above described landmarks

Field notes or records filed in book no. Form 710 on file  
 at the WHC, Dist No 7 office.  
 City of Rhineland, Oneida County.  
 Located or established by PM Johnson, 1961  
 Title Engineer II

County Clerk's Office \_\_\_\_\_ County, Wis. } ss  
 Received for record \_\_\_\_\_, 19\_\_\_\_

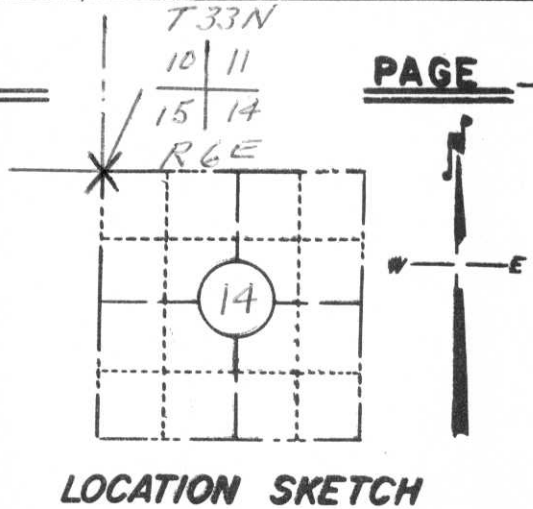
Copy sent to County Surveyor \_\_\_\_\_, 19\_\_\_\_

County Clerk

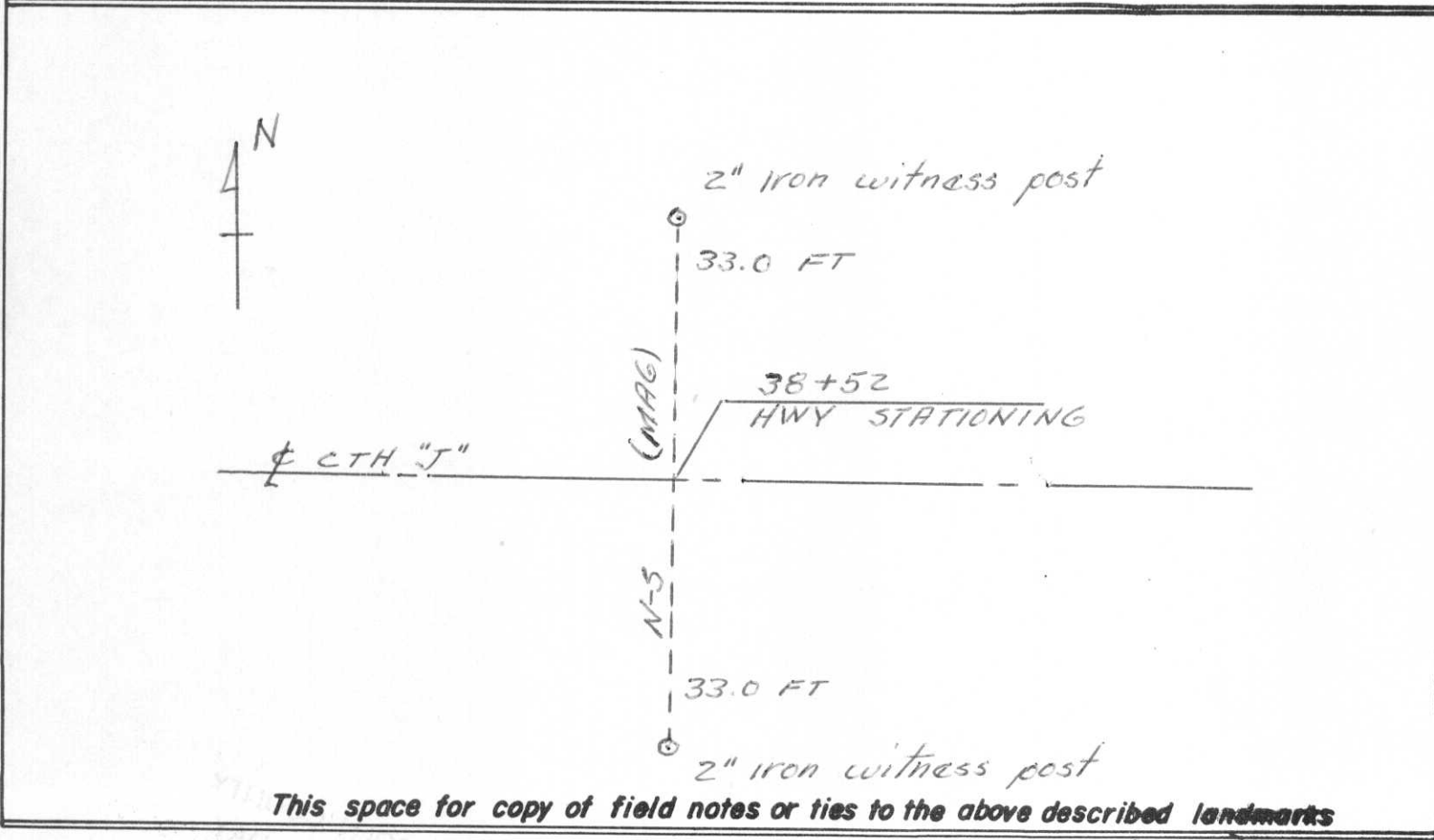
Index No. I-17

# PRESERVATION OF LANDMARKS

SECTION 59,635(7) WISCONSIN STATUTES  
 COUNTY LINCOLN  
 TOWN ROCK FALLS  
 HIGHWAY C.T.H. "J"  
 SECTION NO. 5 10-11 & 15-14  
 T. 33 N., R. 6 E.  
 TYPE OF LANDMARK SEC. CORNER  
 LOCATION INDICATED ON SKETCH X



PAGE \_\_\_\_\_



This space for copy of field notes or ties to the above described landmarks

Field notes or records filed in book no. Form 710 on file  
 at the W.H.C., Dist No 7 office.  
 City of Rhinelander, Oneida County.  
 Located or established by P.M. Johnson, 19 61  
 Title Engineer II

County Clerk's Office \_\_\_\_\_ County, Wis. } ss  
 Received for record \_\_\_\_\_, 19 \_\_\_\_\_

Copy sent to County Surveyor \_\_\_\_\_, 19 \_\_\_\_\_

County Clerk

Index No.

I-17



10/11  
15/14