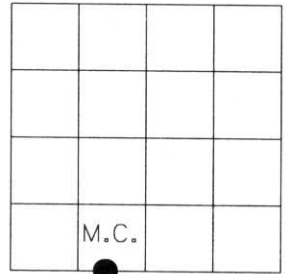


# U.S. PUBLIC LAND SURVEY MONUMENT RECORD

NOTE: This form is intended and designed to fulfill all requirements of Wisconsin Administrative Code, Chapter A-E 7.08 U.S. Public Land Survey Monument Record (3)(a)(b)(c)(d)(e)(f)(g)(h)(i). An additional sheet may be added if necessary to conform with said requirements.

(a) Corner location: Township 33 North  
 Range 06 East  
 Town of ROCK FALLS  
 LINCOLN County, Wisconsin






Section 10

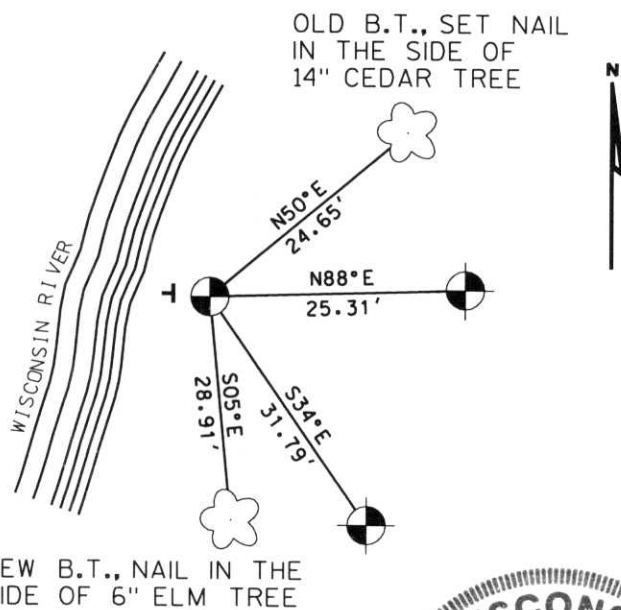
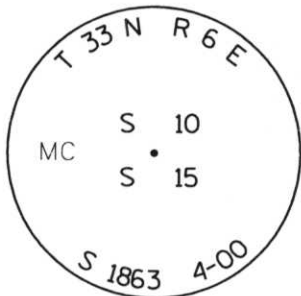
(b)(f)(g)(h) Description of monument found at this corner and if it was accepted, state all evidence (material, testimonial, occupational, plats, records, other monuments) used as a basis for accepting. If not accepted or if nothing was found, state evidence used as basis for establishing location. If reestablished through lost corner proportionate methods, indicate all monuments, distances and directions used to establish. Indicate type of monument found or set and sign post.

2000 - I FIND 1" DIAMETER IRON PIPE AND ONE BT EXCEPTED AS MEANDER CORNER, REPLACED 1" PIPE WITH 4" DIAMETER BERNSTEIN MONUMENT.

RECEIVED AT LINCOLN COUNTY  
 COURTHOUSE THIS 10<sup>TH</sup> DAY  
 OF August 2000  
*Tony Dallman*  
 LAND INFORMATION OFFICE

(c)(d)(e) Plan view of corner with ties to at least 4 witness monuments. If in disagreement with previously established corner, show the distances between the two corners and also indicate the ties to the disputed corner.

-  4" DIAMETER BERNTSEN MONUMENT, SET IN ROCK PILE
-  WITNESS MONUMENT  
7/8" IRON ROD WITH ALUMINUM TABLET, SET
-  PLASTIC SIGNPOST 1' WEST



(i) I, Dennis B. Roberts, Registered Land Surveyor #S-1863, hereby certify that the corner location on this record was determined by me or under my direction and control and that this U.S. Public Land Survey Monument Record is correct and complete to the best of my knowledge and belief.



*Dennis B. Roberts*  
 Signature

8-08-2000  
 Date



PENALTY FOR COVERT DISTURBING COMMUNITY

M.C.S. 10 00 E 00 15 14



LINCOLN COUNTY SURVEY  
MARKER  
1881

