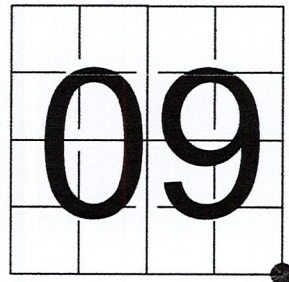


# U S PUBLIC LAND SURVEY MONUMENT RECORD

NOTE: This form is intended and designed to fulfill all requirements of Wisconsin Administrative Code, Chapter A-E 7.08 U.S. Public Land Survey Monument Record (3) (a-i)

A-E 7.08(3)(a) Identity of corner:  
 SOUTHEAST CORNER SECTION 09,  
 TOWNSHIP 33 NORTH,  
 RANGE 06 EAST OF THE 4TH PM,  
 TOWN OF ROCK FALLS,  
 COUNTY OF LINCOLN

WISCORS - LINCOLN COUNTY  
 N: 185,215.859 USft (185,215.810)  
 E: 380,594.857 USft (380,595.010)  
 Datum: NAD83 (2011)  
 GNSS Method RTN - Direct  
 GNSS Control WISCORS VRS



The coordinate value shown has been verified by the average of two or more GPS observations at a markedly different time. Coordinates shown in parenthesis are provided by Lincoln County.

A-E 7.08(3)(b)

Original Surveyor: Jackson L. Prentice

Date of Original Survey Commenced: October 27, 1852  
 Completed: November 9, 1852

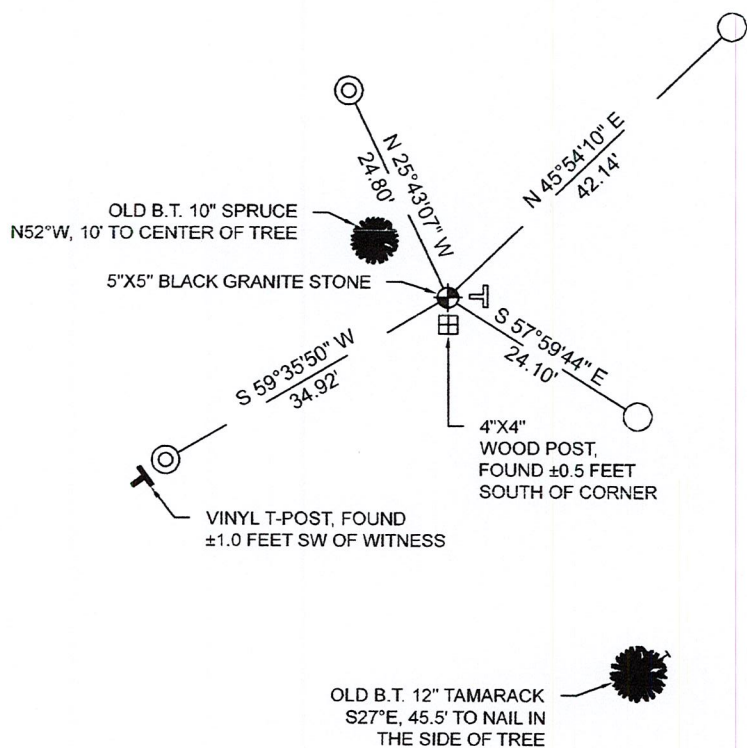
Original Accessories:  
 Tamarac 8 N 56° E 26 Links  
 Tamarac 10 S 16° W 20 Links  
 Tamarac 8 N 87° W 25 Links  
 Tamarac 8 S 45° E 50 Links

1941 - Francis X. Fox (aka Francis X. Fuchs) - Survey of TWP., 32 & 33 N. ~ R.6 E. Town of Rock Falls - indicates "set corners to all forties on all quarter & section lines" on Map M136A.

1963 - Surveyor 1418 - William H. Stuth - indicates this position as "by others" on Lincoln County map S337A.

October 10, 2022 - While performing the 2022 Lincoln County PLSS Corner Remonumentation and GPS Services project, I found a 5" x 5" black granite stone near the computed position provided by Lincoln County. I established 4 new reference monuments as shown below.

A-E 7.08(3)(c)(d) Plan view of corner with references to at least 4 witness monuments.

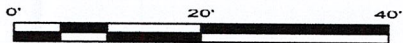


BEARINGS LISTED TO THE NEAREST SECOND ARE REFERENCED TO WISCONSIN COUNTY COORDINATE REFERENCE SYSTEM - LINCOLN COUNTY ZONE. ALL OTHER BEARINGS ARE MAGNETIC

RECEIVED BY LINCOLN COUNTY SURVEYOR THIS 27<sup>TH</sup> DAY OF December 20 22  
 Jeffrey DeMuth  
 COUNTY SURVEYOR

## LEGEND

- 5" x 5" black granite monument, found
- 7/8" diameter iron rod with 2" diameter aluminum cap, found
- 1" diameter X 32" long - Berntsen aluminum monument with 2.5" diameter aluminum cap, set
- Vinyl T-post, set ±1.0 feet east of corner



A-E 7.08(3)(e) 1852 Surveyor set a post, 1941 Surveyor set a granite stone monument, 1963 Surveyor found something. I found a 5" x 5" black granite stone.

A-E 7.08(3)(f) I accept this monument as a FOUND PERPETUATED LOCATION of the corner.

A-E 7.08(3)(g)(h) This corner was not determined through lost-corner-proportionate methods.

A-E 7.08(3)(i) I, Jeffrey L. DeMuth, Professional Land Surveyor No. S-2656, hereby certify that the corner location on this record was determined by the Lincoln County Surveyor, and the monuments found or set as shown hereon were measured by me or under my direction and control, and that this U.S. Public Land Survey Monument Record is correct and complete to the best of my knowledge, and belief.

SIGNATURE

December 14, 2022

DATE



## REPORT

### 2022-Lincoln County PLSS Corner Remonumentation and GPS Services

Wisconsin Corner Point Identification Number: 43306090000

Surveyor: Jeffrey L. DeMuth – S2656

Corner monument: Found 5" x 5" black granite stone.

Field Book: Cardinal North – Lincoln Co. Remon. – 2022-00

Page: 51

Horizontal Datum: WisCRS – Lincoln County Zone – NAD83(2011)

Date / time of initial measurement:

October 10, 2022 - Start 15:26:32 CDT – End 15:48:07 CDT

Reference monuments:

2 - 1" diameter X 32" long aluminum pipe with 2.5" diameter Lincoln Co. aluminum cap.

2 – Found - 2" diameter Lincoln Co. aluminum witness monuments.

1 - Found – 4" X 4" Post

#### Coordinate Table

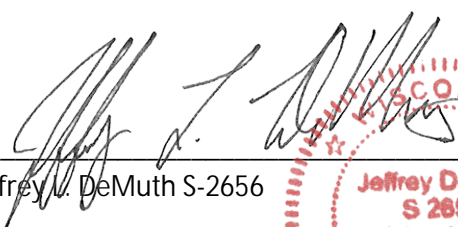
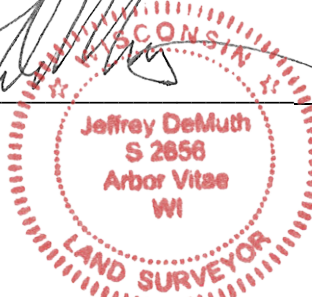
	County Provided	2022 Measurement	Difference
North	185215.810	185215.859	-0.05
East	380595.010	380594.857	0.15

Observed coordinates match with existing coordinates within reason.

Request Data Log for more information.

Additional Notes:

There is a cut line heading west and north from the corner.

  
 Jeffrey L. DeMuth S-2656
 
 November 15, 2022  
 Date



43306090000\_Mon-N





43306090000\_North





43306090000\_West

DO NOT  
DISTURB  
NEARBY  
SM  
SUR  
VKE  
EYR

43306090000



43306090000\_South

S-2056  
10/22





43306090000\_East

