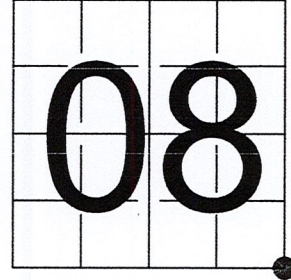


# U S PUBLIC LAND SURVEY MONUMENT RECORD

NOTE: This form is intended and designed to fulfill all requirements of Wisconsin Administrative Code, Chapter A-E 7.08 U.S. Public Land Survey Monument Record (3) (a-i)

A-E 7.08(3)(a) Identity of corner:  
 SOUTHEAST CORNER SECTION 08,  
 TOWNSHIP 33 NORTH,  
 RANGE 06 EAST OF THE 4TH PM,  
 TOWN OF ROCK FALLS,  
 COUNTY OF LINCOLN

WISCORS - LINCOLN COUNTY  
 N: 185,269.569 USft (185,269.590)  
 E: 375,241.903 USft (375,241.889)  
 Datum: NAD83 (2011)  
 GNSS Method RTN - Direct  
 GNSS Control WISCORS VRS



The coordinate value shown has been verified by the average of two or more GPS observations at a markedly different time. Coordinates shown in parenthesis are provided by Lincoln County.

A-E 7.08(3)(b)

Original Surveyor: Jackson L. Prentice

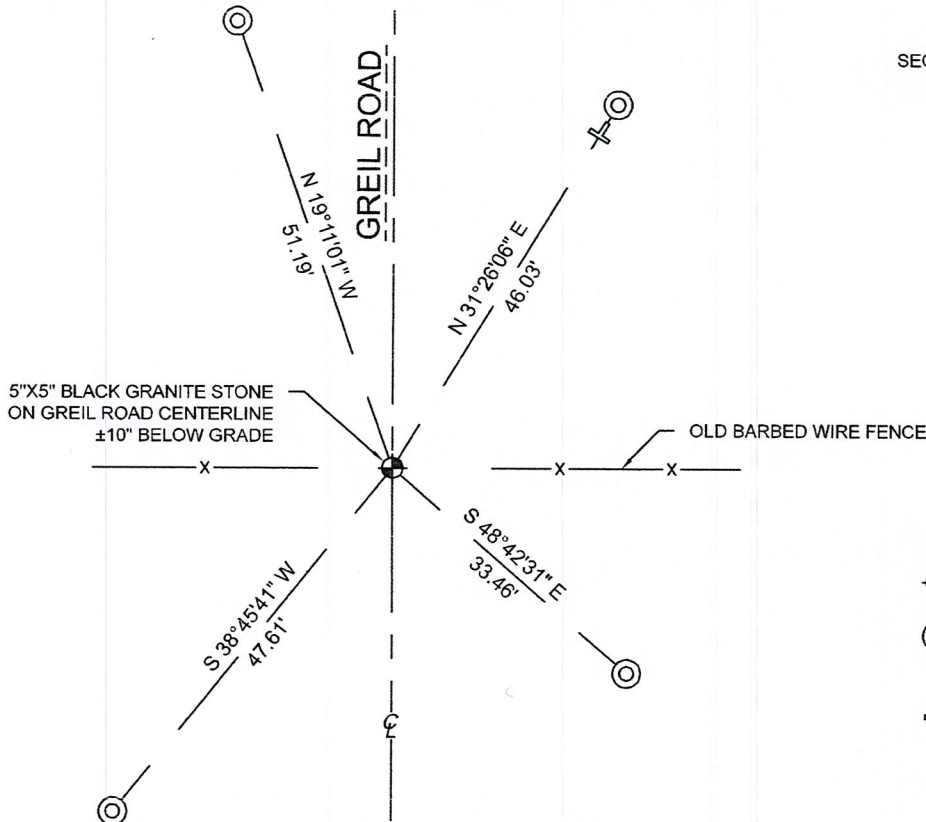
Date of Original Survey Commenced: October 27, 1852  
 Completed: November 9, 1852

Original Accessories:  
 Pine 16 S 63° E 70 Links  
 Pine 16 N 80° E 23 Links  
 Pine 10 S 55° W 70 Links  
 Pine 8 N 30° W 75 Links

1941 - Francis X. Fox (aka Francis X. Fuchs) - Survey of TWP., 32 & 33 N. ~ R.6 E. Town of Rock Falls - indicates "set corners to all forties on all quarter & section lines" on Map M136A.

October 13, 2022 - While performing the 2022 Lincoln County PLSS Corner Remonumentation and GPS Services project, I found a 5" x 5" black granite stone near the computed position provided by Lincoln County. The monument is on the Greil Road centerline, and ±10" below road grade. I established 4 new reference monuments as shown below.

A-E 7.08(3)(c)(d) Plan view of corner with references to at least 4 witness monuments.

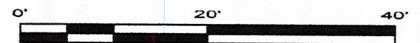


BEARINGS LISTED TO THE NEAREST SECOND ARE REFERENCED TO WISCONSIN COUNTY COORDINATE REFERENCE SYSTEM - LINCOLN COUNTY ZONE. ALL OTHER BEARINGS ARE MAGNETIC

RECEIVED BY LINCOLN COUNTY SURVEYOR THIS 27<sup>TH</sup> DAY OF December 20 22  
 Jeffrey DeMuth  
 COUNTY SURVEYOR

## LEGEND

- 5" x 5" black granite monument, found
- 7/8" diameter X 30" long - iron rod with 2" diameter aluminum cap, set
- Vinyl T-post, set ±1.0 feet SW of witness



A-E 7.08(3)(e) 1852 Surveyor set a post, 1941 Surveyor set a granite stone monument. I found a 5" x 5" black granite stone.

A-E 7.08(3)(f) I accept this monument as a FOUND PERPETUATED LOCATION of the corner.

A-E 7.08(3)(g)(h) This corner was not determined through lost-corner-proportionate methods.

A-E 7.08(3)(i) I, Jeffrey L. DeMuth, Professional Land Surveyor No. S-2656, hereby certify that the corner location on this record was determined by the Lincoln County Surveyor, and the monuments found or set as shown hereon were measured by me or under my direction and control, and that this U.S. Public Land Survey Monument Record is correct and complete to the best of my knowledge, and belief.

SIGNATURE DATE December 14, 2022



6-1

## REPORT

### 2022-Lincoln County PLSS Corner Remonumentation and GPS Services

Wisconsin Corner Point Identification Number: 43306080000

Surveyor: Jeffrey L. DeMuth – S2656

Corner monument: Found 5" x 5" black granite stone.

Field Book: Cardinal North – Lincoln Co. Remon. – 2022-00

Page: 51

Horizontal Datum: WisCRS – Lincoln County Zone – NAD83(2011)

Date / time of initial measurement:

October 13, 2022 - Start 16:40:41 CDT – End 16:55:16 CDT

Reference monuments:

4 – Set - 7/8" diameter X 30" long iron rods with 2" diameter Lincoln Co. aluminum cap.

#### Coordinate Table

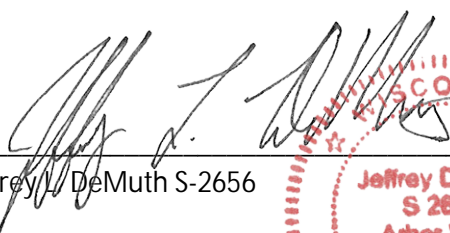
	County Provided	2022 Measurement	Difference
North	185269.590	185269.569	0.02
East	375241.889	375241.903	-0.01

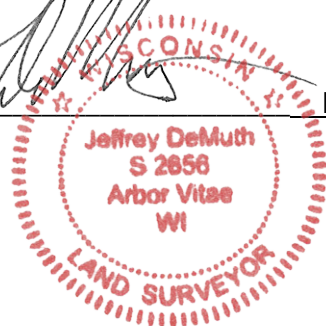
Observed coordinates match with existing coordinates within reason.

Request Data Log for more information.

Additional Notes:

Corner falls on Greil Road centerline and is  $\pm 10"$  below the road grade. There is a fence line heading east and west from the corner.

  
 Jeffrey L. DeMuth S-2656
 
 November 15, 2022  
 Date



43306080000\_Mon-N



43306080000\_North



43306080000\_West



4330608000\_South



43306080000\_East

