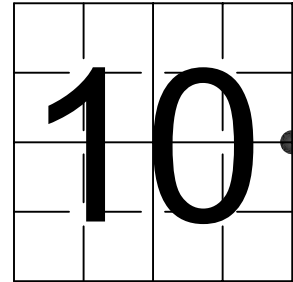


# U S PUBLIC LAND SURVEY MONUMENT RECORD

NOTE: This form is intended and designed to fulfill all requirements of Wisconsin Administrative Code, Chapter A-E 7.08 U.S. Public Land Survey Monument Record (3) (a-i)

A-E 7.08(3)(a) Identity of corner:  
 EAST 1/4 CORNER SECTION 10,  
 TOWNSHIP 33 NORTH,  
 RANGE 06 EAST OF THE 4TH PM,  
 TOWN OF ROCK FALLS,  
 COUNTY OF LINCOLN

WISCORS - LINCOLN COUNTY  
 N: 187,727.743 USft (187,729.559)  
 E: 385,960.697 USft (385,959.230)  
 Datum: NAD83 (2011)  
 GNSS Method RTN - Direct  
 GNSS Control WISCORS VRS



The coordinate value shown has been verified by the average of two or more GPS observations at a markedly different time. Coordinates shown in parenthesis are provided by Lincoln County.

A-E 7.08(3)(b)

Original Surveyor: Jackson L. Prentice

Date of Original Survey	Commenced:	October 27, 1852	Original Accessories:
	Completed:	November 9, 1852	Tamarac 10 S 82° E 24 links
			Tamarac 8 S 64° W 11 links

1941 - Francis X. Fox (aka Francis X. Fuchs) - Survey of TWP., 32 & 33 N. ~ R.6 E. Town of Rock Falls - indicates "set corners to all forties on all quarter & section lines" on Map M136A.

1963 - Surveyor 1418 - William H. Stuth - indicates this position as "by others" on Lincoln county map S337A.

December 5, 2022 - While performing the 2022 Lincoln County PLSS Corner Remonumentation and GPS Services project, County Surveyor, Anthony R. Dallman accompanied me to the corner. We made a thorough search of the area, and found nothing. together we located the Center East 1/16th corner, being a 1.5" diameter iron pipe set by Francis Fox in 1941.

December 6, 2022 - County Surveyor, Anthony R. Dallman and I returned to this location with a "new" calculated position based off the Center East 1/16th corner. We found a stone monument in an open tamarack swamp beneath ±3 feet of water and swamp material. We located the possible stone, but were unable to verify it as the corner at this time. I established 4 new reference monuments.

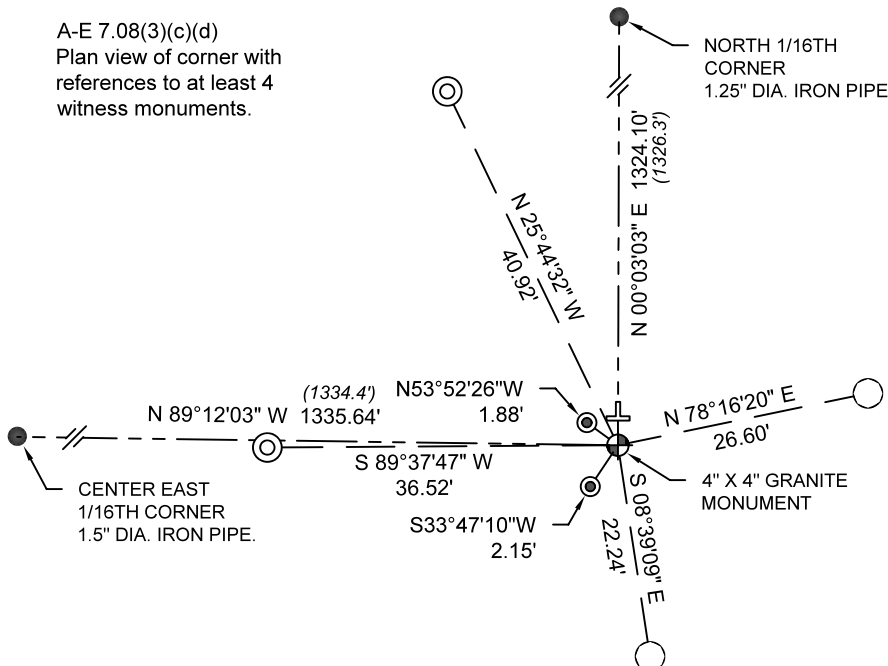
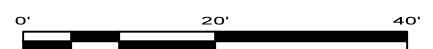
August 28, 2023 - County Surveyor, Anthony R. Dallman and I returned to this location to identify the stone and found that it was not the corner monument. We then located the North 1/16th corner, being a 1.25" diameter iron pipe set by Francis Fox in 1941. We recalculated the the corner position based on distances from the Center East 1/16th corner and the North 1/16th corner. We excavated an area approximately 4 feet wide and 5 feet long at the calculated position, and found a 4"X4" square granite stone engraved to identify the corner location. The monument is straight and ±8" below the water surface We also found 3 wooden stakes in the excavated area, one being ±36" long with the top rotted off, the next being ±70" long fully intact with a squared off top, scribed: 1/4, S 10, S 11 on alternating sides, and the last being ±84" long and ± 6" in diameter. All had pointed ends made by axe. We suspect that the first stake mentioned to be the original corner, The second to be the post mentioned by Fox in his survey notes, and the third to be a guard post set by an adjoining property owner. We left all of the posts at the corner, and established 2 reference monuments in addition to the 4 previously established, their position relative to the granite monument is shown below.

A-E 7.08(3)(c)(d)  
 Plan view of corner with references to at least 4 witness monuments.

BEARINGS LISTED TO THE NEAREST SECOND ARE REFERENCED TO WISCONSIN COUNTY COORDINATE REFERENCE SYSTEM - LINCOLN COUNTY ZONE. ALL OTHER BEARINGS ARE MAGNETIC

## LEGEND

- ⊕ 4" x 4" granite monument, found
- ⊙ 7/8" diameter X 30" long - iron rod with 2" diameter aluminum cap, set
- ⊙ 1" diameter X 60" long - aluminum pipe with 2.5" diameter aluminum cap, set
- 1" diameter X 32" long - aluminum pipe with 2.5" diameter aluminum cap, set
- Iron pipe, found as noted
- ⊥ Vinyl T-post, set ±1 foot north of monument.

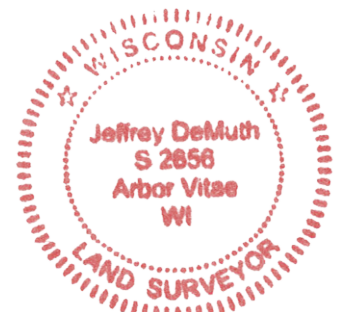


A-E 7.08(3)(e) 1852 Surveyor set a post, 1941 Surveyor set a granite stone monument, 1963 Surveyor found something. I found a 4" X 4" granite stone.

A-E 7.08(3)(f) I accept this monument as a FOUND PERPETUATED LOCATION of the corner.

A-E 7.08(3)(g)(h) This corner was not determined through lost-corner-proportionate methods.

A-E 7.08(3)(i) I, Jeffrey L. DeMuth, Professional Land Surveyor No. S-2656, hereby certify that the corner location on this record was determined by the Lincoln County Surveyor, and the monuments found or set as shown hereon were measured by me or under my direction and control, and that this U.S. Public Land Survey Monument Record is correct and complete to the best of my knowledge, and belief.



SIGNATURE

August 30, 2023

DATE

## REPORT

### 2022-Lincoln County PLSS Corner Remonumentation and GPS Services

Wisconsin Corner Point Identification Number: 43306102000

Surveyor: Jeffrey L. DeMuth – S2656

Corner monument: 4"X4"Granite Stone (in muddy water – could not determine color)

Field Book: Cardinal North – Lincoln Co. Remon. – 2022-00

Page: 76

Horizontal Datum: WisCRS – Lincoln County Zone – NAD83(2011)

Date / time of initial measurement:

August 28, 2023 - Start 13:02:36 CDT – End 13:09:45 CDT

Reference monuments:

2 – Set - 7/8" diameter X 30" long iron rods with 2" diameter Lincoln Co. aluminum cap.

2 - Set - 1" diameter X 32" long aluminum pipe with 2.5" diameter Lincoln Co. aluminum cap.

2 - Set - 1" diameter X 60" long aluminum pipe with 2.5" diameter Lincoln Co. aluminum cap.

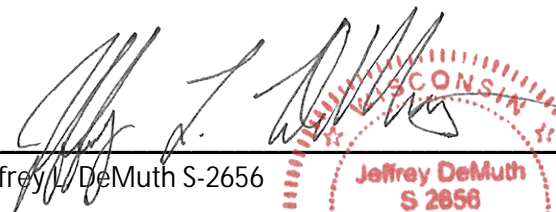
Coordinate Table

	County Provided	2023 Measurement	Difference
North	187729.559	187727.743	1.82
East	385959.230	385960.697	-1.47

Observed coordinates do not match existing calculated coordinates. Reason –monument found.

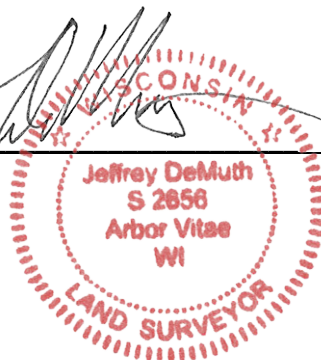
Additional Notes:

Corner falls in a tamarack swamp and is  $\pm 8$ " below water surface.

  
 Jeffrey L. DeMuth S-2656

August 30, 2023

Date





43306102000\_Mon-N





43306102000\_North



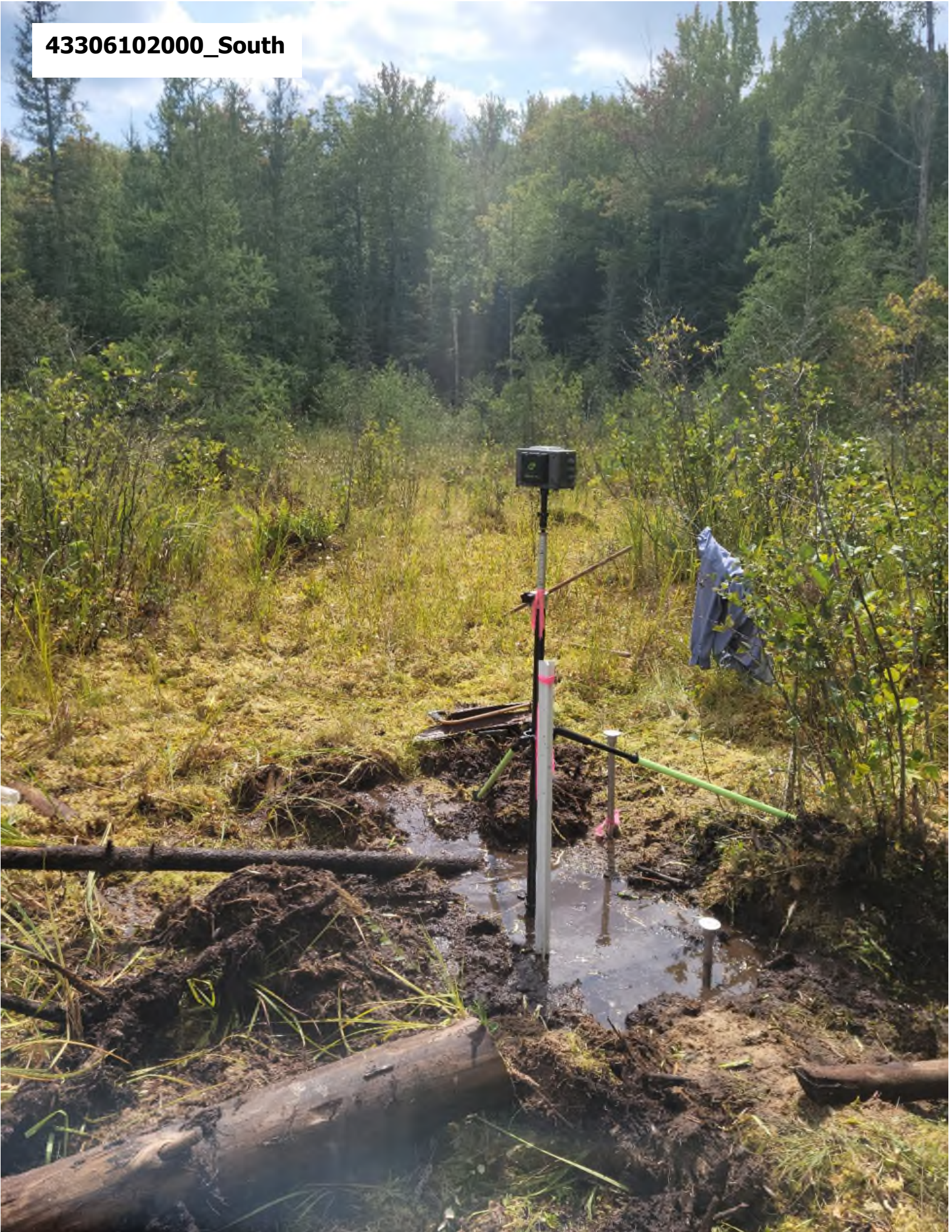


43306102000\_West





43306102000\_South





43306102000\_East





43306102000\_Misc-1





43306102000\_Misc-2





43306102000\_Misc-3





43306102000\_Misc-4





43306102000\_Misc-5

