

U.S. PUBLIC LAND SURVEY MONUMENT RECORD

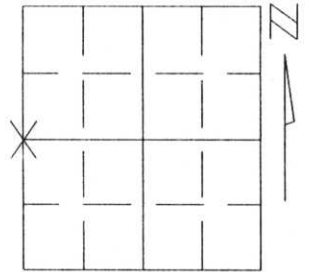
Note: This form is intended and designed to fulfill all requirements of Wisconsin Administrative Code, Chapter A-E 5.02, U.S. Public Land Survey Monument Record (3)(a)(b)(c)(d)(e)(f)(g)(h)(i). An additional sheet may be added if necessary to conform with said requirements.

(a) Corner location: Township 33 North

Range 6 East

Town/City/Village TOWN OF ROCK FALLS

County LINCOLN



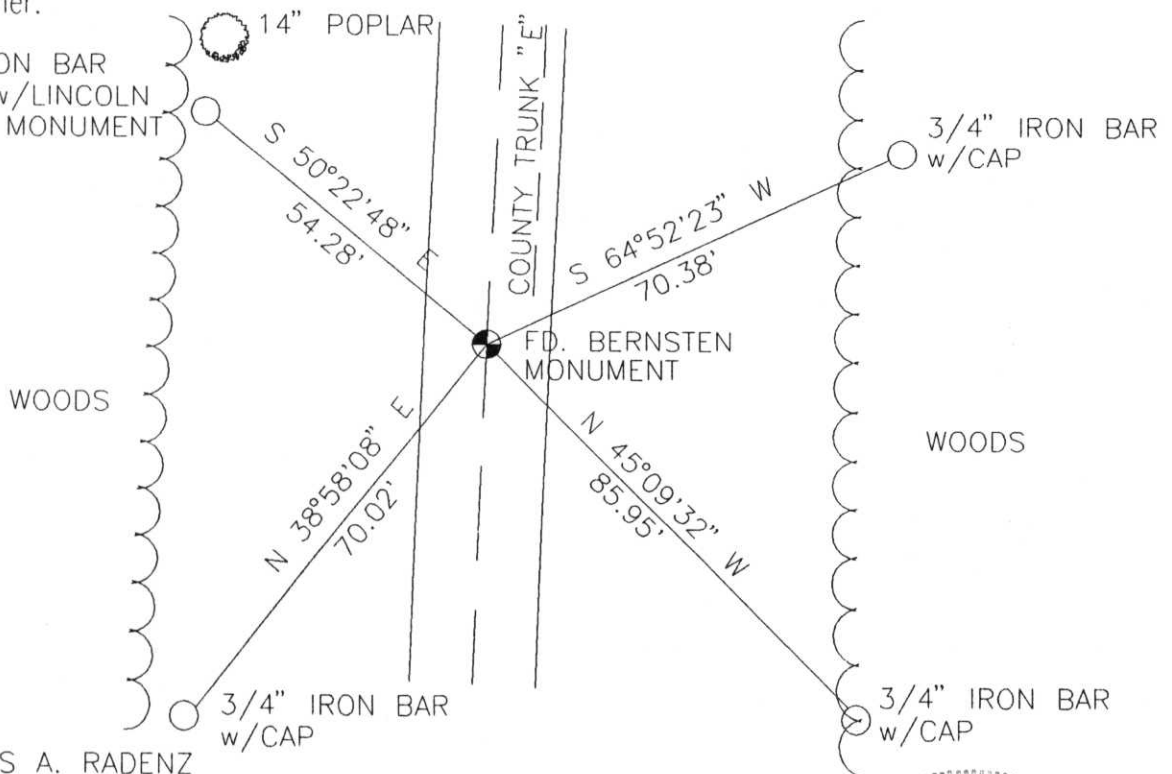
Section 8

(b)(f)(g)(h) Description of monument found at this corner and if it was accepted, state all evidence (material, testimonial, occupational, plats, records, other monuments) used as a basis for accepting. If not accepted or if nothing was found, state evidence used as basis for establishing location. If reestablished through lost corner proportionate methods, indicate all monuments, distances and directions used to establish.

We found a Bernsten Monument in place at the corner location. The distance from the northwest corner and the southwest corner matches the distance measured by Francise Fox in 1941 (within reason). We accepted this as the corner locati

**RECEIVED AT LINCOLN COUNTY
COURTHOUSE THIS 3rd DAY
OF Jan 19 92
Pat Priebe
TAX DESCRIPTION OFFICE**

(c)(d)(e) Plan view of corner with ties to at least 4 witness monuments. If in disagreement with previously established corner, show the distances between the two corners and also indicate the ties to the disputed corner.



(i) I, THOMAS A. RADENZ
(type or print name) certify that the corner location on this record was determined by me or under my direction and control and that this U.S. Public Land Survey Monument Record is correct and complete to the best of my knowledge and belief.

Thomas A. Radenz
Signature

12-26-96
Date



Index No. G-5



MARRIOTT

COUNTY

WATER

DISTRICT



ATLANTA



