

U.S. PUBLIC LAND SURVEY MONUMENT RECORD

LINCOLN COUNTY, WISCONSIN

LOCATION

(a) Identify the corner by Reference to the U.S. public land survey system.

SEC 2 TOWN 33N RANGE 6E

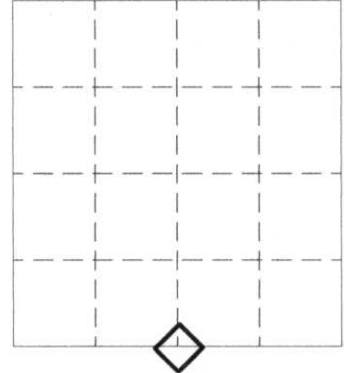
TYPE OF CORNER 1/4 SECTION

TOWNSHIP ROCK FALLS

TYPE OF MON. 6"x6" Granite Stone

NORTHING 190,295.67'

EASTING 388,651.93'

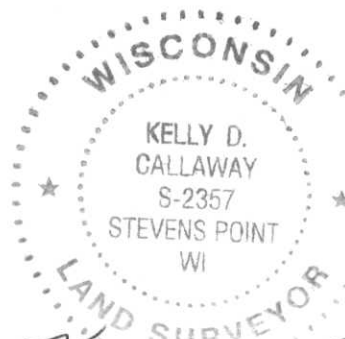


(COUNTY COORDINATES)

RECOVERY PROCEDURE

(B) Describe any record evidence, monument evidence, occupational evidence, testimonial evidence or any other material evidence you considered, and whether the monument was found or placed. (F) Was the corner restored through acceptance of (1) an obliterated evidence location, or, (2) a found perpetuated location? (G & H) Was the corner reestablished through lost corner proportionate methods? If so, show the method, including the directions and distances to other public land survey corners used as evidence or used for proportioning in determining the corner location.

1941: F. Fox set Stone
 2008: I found stone below surface +/- 1'. Stone was oriented so the corner was facing north. chisled on the top was the the section numbers and a line from West corner to East corner of stone a hole at the center



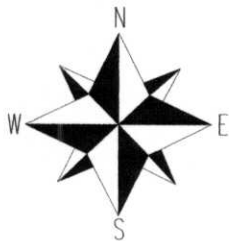
Kelly D. Callaway 2-15-08
 Kelly D. Callaway, R.L.S. 2357 DATE

(i) I, Kelly D. Callaway certify that the corner location shown on this record was determined by me or under my direction and control and that this U.S. Public Land Survey Monument Record is correct and complete to the best of my knowledge and belief.

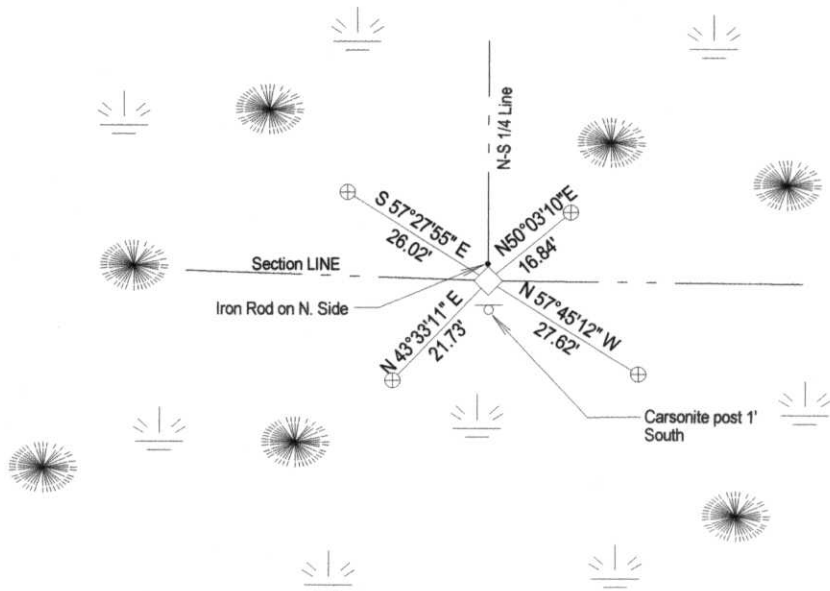
RECEIVED BY LINCOLN COUNTY
 SURVEYOR THIS 21ST DAY
 OF February 20 08
Troy Dall
 COUNTY SURVEYOR

(C) In the plan view drawing below, provide reference ties to at least 4 witness monuments, or, if the location is within a municipality, to at least 2 witness monuments. (Witness monuments shall be made of concrete, natural stone, iron or other equally durable material.) Describe witness monuments. (D) Show a plan view drawing depicting the relevant monuments and reference ties which is sufficient in detail to enable accurate relocation of the corner monument if the corner monument is disturbed. (E) Describe any material discrepancy between the location of the corner as restored or reestablished and the location of that corner as previously restored or reestablished by distance and direction.

PLAN VIEW



- ◇ Granite Stone
- ⊕ Bemtsen Driveable w/ Lincoln Co. Cap



FIELD CREW	K. Callaway, D. Rusin	FIELD DATE	2/1/08
DRAFTED BY	K. Callaway	CHECKED BY	K. Callaway

E-19