

# LINCOLN COUNTY U.S. PUBLIC LAND SURVEY MONUMENT LOCATION RECORD

CORNER NUMBER 53365

SECTION 5

TOWNSHIP 33 NORTH

RANGE 6 EAST

ROCK FALLS

CITY, VILLAGE, TOWN



LANDMARK       BENCHMARK \_\_\_\_\_      FOUND  SET   
CORNER IDENTITY: EAST 1/4 CORNER SECTION 5      RE-SET  RE-TIED

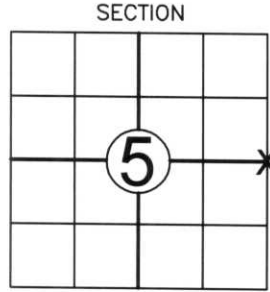
LINCOLN COUNTY COORDINATE: N: 193194.60  
E: 375395.47

ELEVATION-(FEET): \_\_\_\_\_ DATUM: \_\_\_\_\_

WEATHER: PARTLY CLOUDY

DATE OF SURVEY: 2-28-06 TEMPERATURE: 20 °F

SURVEY PARTY: NATHAN WINCENTSEN, KEITH WALKOWSKI



LOCATION (Indicated By X)



**BASIS FOR MONUMENT LOCATION:**  
(DESCRIBE METHOD OF SURVEY AND CORNER AUTHENTICATION)

SEARCHED FOR EAST 1/4 CORNER, FOUND BERNSTEN MONUMENT FLUSH WITH BLACKTOP AND 6' NORTH OF CENTERLINE AS SET BY THE LINCOLN COUNTY HIGHWAY DEPARTMENT DURING THE RECONSTRUCTION OF C.T.H. "E" IN 1986. ACCEPTED BERNSTEN AS EAST 1/4 CORNER AND PERPETUATED AS SHOWN BELOW.



CERTIFIED CORRECT:  
Keith J. Walkowski  
KEITH J. WALKOWSKI  
Registered Land Surveyor  
DATE: March 7, 2006

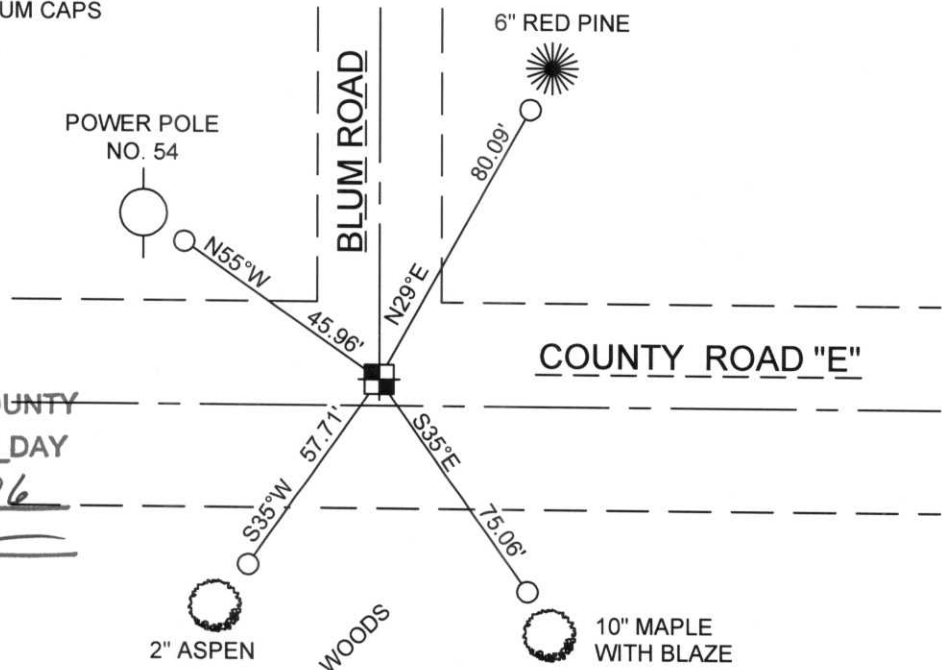
FIELD BOOK NO. 6 PAGE NO. 17  
COMPANY RIVERSIDE LAND SURVEYING LLC

**TIE SKETCH:** SHOW MINIMUM OF FOUR (4) HORIZONTAL TIE DISTANCES TO FIXED WITNESS MONUMENTS. DESCRIBE ALL MONUMENTS FOUND OR SET. CORRECT ALL DISTANCES SHOWN TO STANDARD TEMPERATURE OF 68° F.

- FOUND BERNSTEN MONUMENT
- SET 3/4" REBAR WITH ALUMINUM CAPS
- VINYL SURVEY MARKER POST

**NOTE**

- ALL BEARINGS ARE FROM A HAND HELD MAGNETIC COMPASS
- THIS DRAWING IS NOT TO SCALE



RECEIVED BY LINCOLN COUNTY SURVEYOR THIS 9TH DAY OF March 20 06  
Tony Dahl  
COUNTY SURVEYOR

6-7

# U.S. PUBLIC LAND SURVEY MONUMENT RECORD

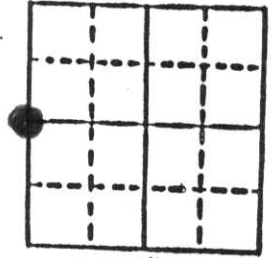
Note: This form is intended and designed to fulfill all requirements of Wisconsin Administrative Code, Chapter A-E 5.02, U.S. Public Land Survey Monument Record (3) (a) (b) (c) (d) (e) (f) (g) (h) (i). An additional sheet may be added if necessary to conform with said requirements.

(a) Corner location: Township 33 North

Range 06 East

Town Rock Falls

County Lincoln



Section 4

b) (f) (g) (h) Description of monument found at this corner and if it was accepted, state all evidence (material, testimonial, occupational, plats, records, other monuments) used as a basis for accepting. If not accepted or if nothing was found, state evidence used as basis for establishing location. If reestablished through lost corner proportionate methods, indicate all monuments, distances and directions used to establish.

30" Berntsen was set July 1986 by Lincoln County Highway Dept. at time of reconstruction of Hwy E.

c) (d) (e) Plan view of corner with ties to at least 4 witness monuments. If in disagreement with previously established corner, show the distances between the two corners and also indicate the ties to the disputed corner.

(f) I, \_\_\_\_\_  
(type or print name) certify that the corner location on this record was determined by me or under my direction and control and that this U.S. Public Land Survey Monument Record is correct and complete to the best of my knowledge and belief.

AFFIX  
SEAL  
HERE

Index No. C-9

Signature \_\_\_\_\_

Date \_\_\_\_\_





WINGOLD-N COUNTY  
SURVEY  
FOR DISTURBING MARKER

1.133 N. E. 1/2 P. 6  
5







