

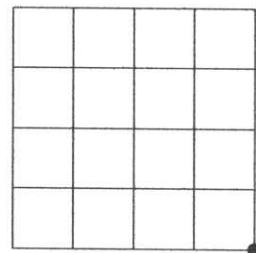
RECEIVED BY LINCOLN COUNTY
 SURVEYOR THIS 11TH DAY
 OF November 20 04
Tony Dall
 COUNTY SURVEYOR

U.S. PUBLIC LAND SURVEY MONUMENT RECORD

Note: This form is intended and designed to fulfill all requirements of the Wisconsin Administrative Code, Chapter A-E 7.08 U.S. Public Land Monument Record (3)(a)(b)(c)(d)(e)(f)(g)(h)(i). An additional sheet may be added if necessary to conform with said requirements.

(a) CORNER LOCATION: COORDINATES

southeast corner of Section 36 North:
 Township 33 North East:
 Range 5 East Control Station:
 Town of Harding Latitude:
 County of Lincoln Longitude:
 Datum Method



SECTION 36

(b) HISTORY OF ORIGINAL CORNER ESTABLISHMENT

Original Surveyor: J.M. Marsh
 Date of Survey: Commenced July 1851
 Completed August 1851

Original B.T.'S
 Hemlock 12" dia., S16°E 21 links Hemlock 12" dia., N1°E 48 links
 Sugar 10" dia., S28°W 14 links Hemlock 12" dia., N8°W 21 links

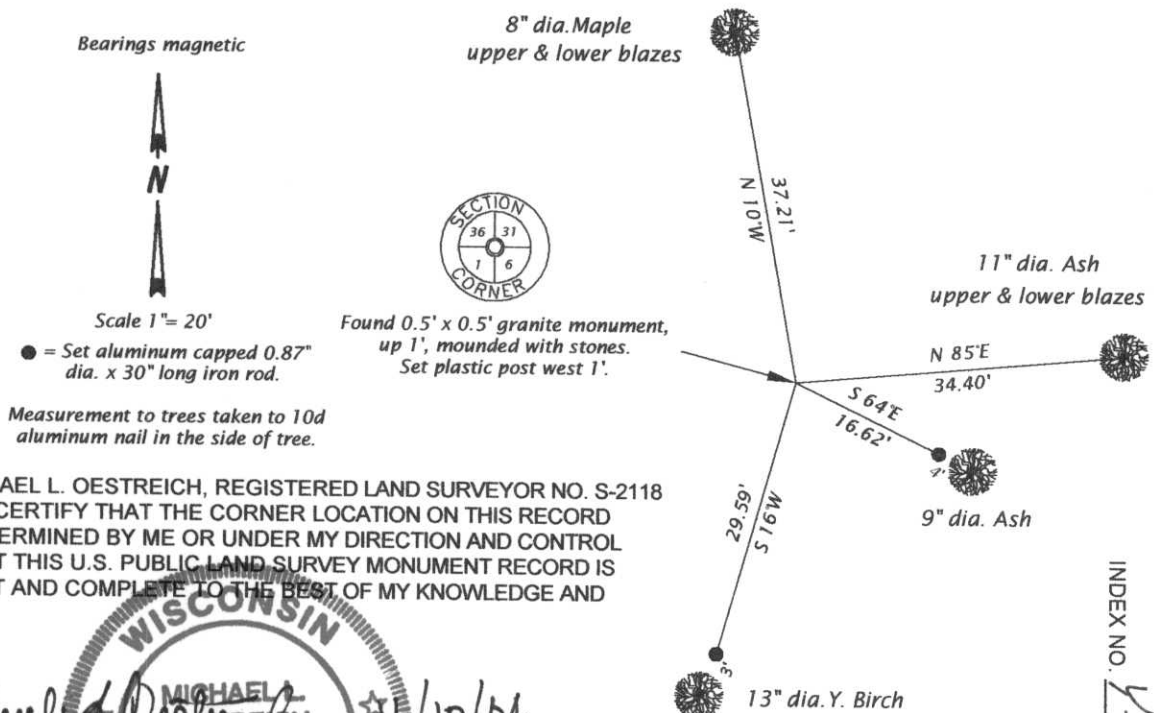
(f)(g)(h) DESCRIPTION OF MONUMENT FOUND AT THIS CORNER AND IF IT WAS ACCEPTED, STATE ALL EVIDENCE (MATERIAL, TESTIMONIAL, OCCUPATIONS, PLATS, RECORDS, OTHER MONUMENTS) USED AS A BASIS FOR ESTABLISHING LOCATION. IF NOT ACCEPTED OF IF NOTHING WAS FOUND, STATE EVIDENCE USED AS BASIS FOR ESTABLISHING LOCATION. IF REESTABLISHED THROUGH LOST CORNER PROPORTIONATE METHODS, INDICATE ALL MONUMENTS, DISTANCES AND DIRECTIONS USED TO ESTABLISH. INDICATE TYPE OF MONUMENT AND SIGN POST FOUND OR SET.

Original surveyor: J.M. Marsh, west between Sections 6 & 31 at 83.96 chains, intersected west boundary 240 links north of temporary 6 mile corner, set post for corner to Townships 32 & 33 North, and Ranges 5 & 6 East.

Francis Fox: date unknown, south between Sections 31 & 36 at 5201.1' turned LT off forward tan. 21degrees 21 minutes 78.5' to original Township Corner. Original BT N1E 31.7'. Stone sets on steep slope. Hemlock 15" dia. S40E 19.1' and Cedar 22" dia. N64 1/2E 46.5'. Mounded with stone.

Michael L. Oestreich : July 2002, recovered 0.5' x 0.5' granite stone, with 36, 31, 1 & 6 chiseled on top. Set magnet next to stone. Also recovered remains of Fox's Cedar bearing tree, now a stump which bears N64E and 47.1' distant. Made new bearing trees and set reference monuments as shown in plan below.

(c)(d)(e) PLAN VIEW OF CORNER WITH TIES TO AT LEAST 4 WITNESS MONUMENTS. IF IN DISAGREEMENT WITH PREVIOUSLY ESTABLISHED CORNER, SHOW THE DISTANCE BETWEEN THE TWO CORNERS AND ALSO INDICATE THE TIES TO THE DISPUTED CORNER.



(i) I, MICHAEL L. OESTREICH, REGISTERED LAND SURVEYOR NO. S-2118 HEREBY CERTIFY THAT THE CORNER LOCATION ON THIS RECORD WAS DETERMINED BY ME OR UNDER MY DIRECTION AND CONTROL AND THAT THIS U.S. PUBLIC LAND SURVEY MONUMENT RECORD IS CORRECT AND COMPLETE TO THE BEST OF MY KNOWLEDGE AND BELIEF.

Michael L. Oestreich
 SIGNATURE DATE 11/10/04

WISCONSIN
 MICHAEL L. OESTREICH
 S-2118
 MINOCQUA,
 WI
 LAND SURVEYOR

INDEX NO. 1-25









