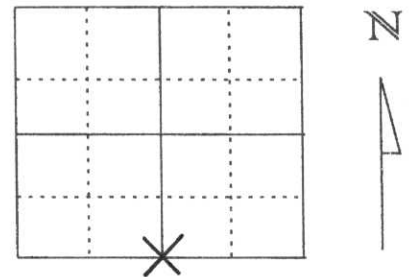


U.S. PUBLIC LAND SURVEY MONUMENT RECORD

Note: This form is intended and designed to fulfill all requirements of Wisconsin Administrative Code, Chapter A-E 5.02, U.S. Public Land Survey Monument Record (3) (a) (b) (c) (d) (e) (f) (g) (h) (l). An additional sheet may be added if necessary to conform with said requirements.

(a) Corner location: Township 33 North
 Range 5 East
 Town/City/Village HARDING
 County Lincoln



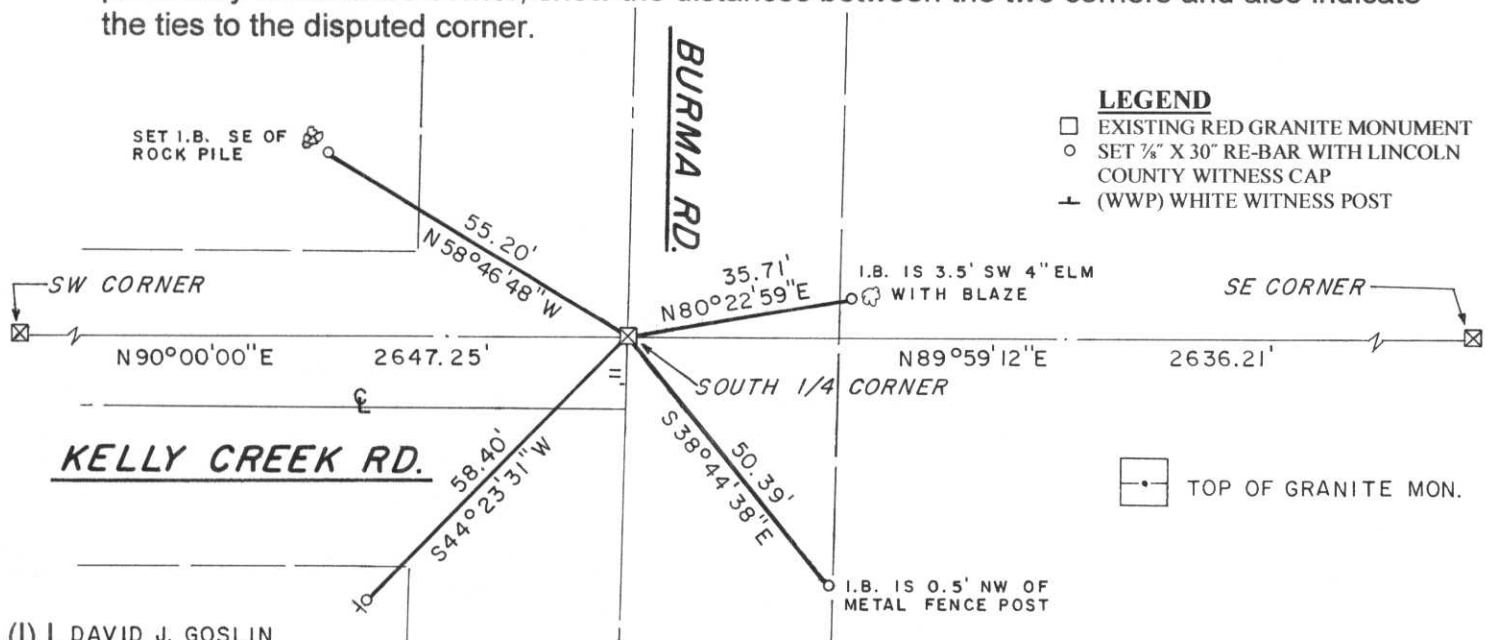
Section 35

(b) (f) (g) (h) Description of monument found at this corner and if it was accepted, state all evidence (material, testimonial, occupational, plats, records, other monuments) used as a basis for accepting. If not accepted or if nothing was found, state evidence used as basis for establishing location. If reestablished through lost corner proportionate methods, indicate all monuments, distances and directions used to establish.

IN 1851, J. M. MARSH SET POST FOR SOUTH 1/4 CORNER WITH THE FOLLOWING TIES: BIRCH 8 N25°E 10 LINKS, BIRCH 14 S85°E, 40 LINKS, BIRCH 16 S50°W 39 LINKS, BLACK ASH 8 N18°W 21 LINKS. IN 1937 FRANCIS FOX SET STONE 1/4 AT CENTERLINE OF ROAD AND OFFSET A POST EAST. I HAD LINCOLN COUNTY DIG FOR CORNER IN THE CENTER OF BURMA ROAD AT CORNER LOCATION. WE FOUND A 6" X 6" X 24" RED GRANITE MONUMENT 2' BELOW ROAD SURFACE. ACCEPTED STONE AS LOCATION OF SOUTH 1/4 CORNER AND SET A 1" X 24" IRON PIPE ON NORTH SIDE OF MONUMENT AND FILLED IN HOLE. TIED OUT AS SHOWN BELOW.

RECEIVED BY LINCOLN COUNTY
 SURVEYOR THIS 9TH DAY
 OF January 20 06
Tommy Doherty
 COUNTY SURVEYOR

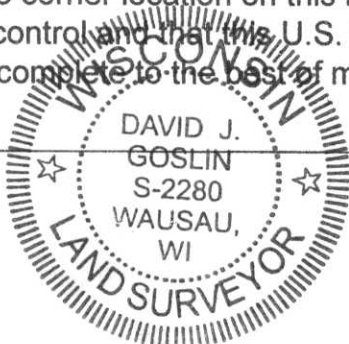
(c) (d) (e) Plan view of corner with ties to at least 4 witness monuments. If in disagreement with previously established corner, show the distances between the two corners and also indicate the ties to the disputed corner.



(l) I, DAVID J. GOSLIN

(type or print name) certify that the corner location on this record was determined by me or under my direction and control and that this U.S. Public Land Survey Monument Record is correct and complete to the best of my knowledge and belief.

David J. Goslin
 Signature



1-9-06
 Date

Index No. 1-19









