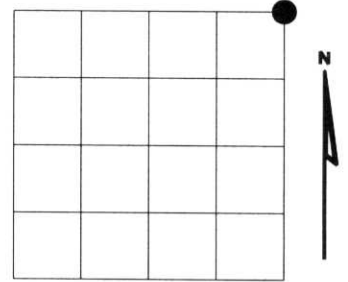


# U.S. PUBLIC LAND SURVEY MONUMENT RECORD

NOTE: This form is intended and designed to fulfill all requirements of Wisconsin Administrative Code, Chapter A-E 7.08 U.S. Public Land Survey Monument Record (3)(a)(b)(c)(d)(e)(f)(g)(h)(i). An additional sheet may be added if necessary to conform with said requirements.

(a) Corner location: Township 32 North  
 Range 05 East  
 Town of HARDING  
 LINCOLN County, Wisconsin



Section 06

(b)(f)(g)(h) Description of monument found at this corner and if it was accepted, state all evidence (material, testimonial, occupational, plats, records, other monuments) used as a basis for accepting. If not accepted or if nothing was found, state evidence used as basis for establishing location. If reestablished through lost corner proportionate methods, indicate all monuments, distances and directions used to establish. Indicate type of monument found or set and sign post.

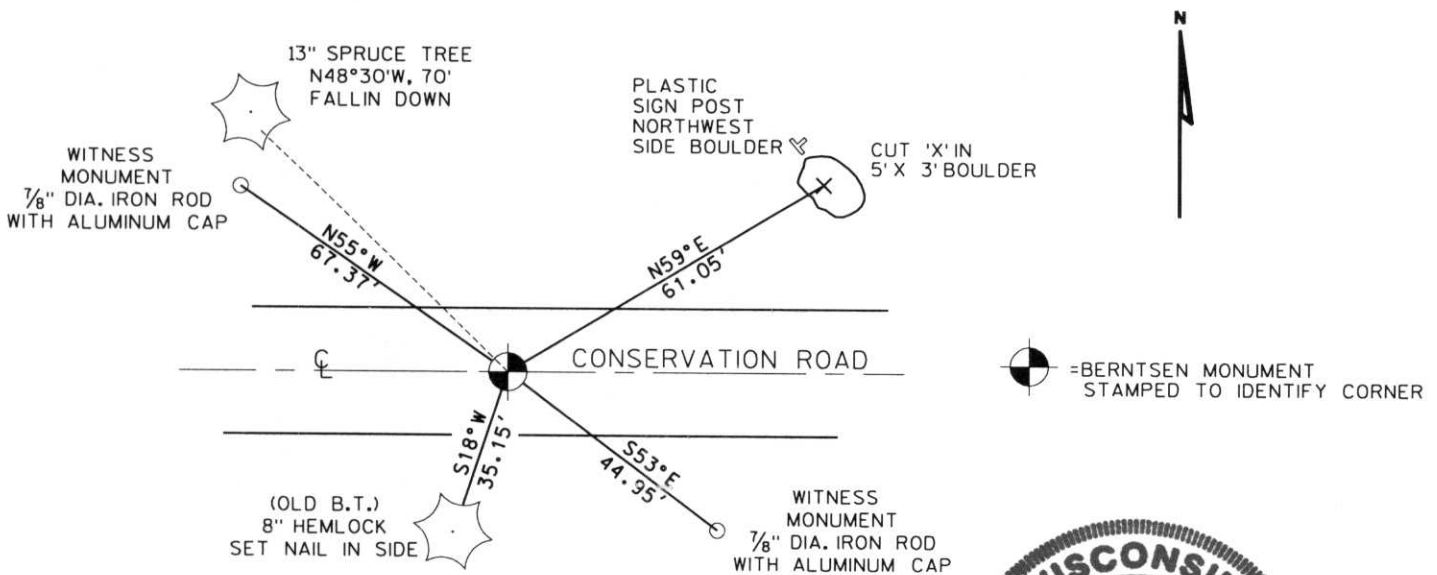
1937 - FRANCIS X. FOCHS (NOW FOX) SET STONE MONUMENT AT INTERSECTION OF FENCE LINE AND CENTERLINE OF ROAD. FIELD NOTES ON FILE IN LINCOLN COUNTY FOREST, LAND AND PARK DEPARTMENT

1983 - BILL STUTH FOUND GRANITE STONE UPRIGHT ± 1" BELOW ROAD SURFACE AND SET B.T.'S  
 13" SPRUCE N48° 30'W, 70'  
 5" HEMLOCK S20°W, 35.5'

05-01 - IFIND STUTH B.T.'S, 5" HEMLOCK STANDING AND 13" SPRUCE FALLIN DOWN MADE SEARCH FOR FOCHS STONE AND DETERMINED THAT IT WAS TAKEN OUT BY ROAD RECONSTRUCTION, CORNER LOCATION IS IN A SECTION OF ROAD THAT HAD BEEN CUT ±3'. WE EXCAVATED AREA BY HAND AND FOUND SUBSOIL UNDER GRAVEL ROAD UNDISTURBED AND ALL EVIDENCE REMOVED. I SET A ~~LINCOLN COUNTY~~ **LINCOLN COUNTY** BERNTSEN MONUMENT USING STUTH B.T.'S AS SHOWN.

**LINCOLN COUNTY**  
 COURTHOUSE THIS 8<sup>TH</sup> DAY  
 OF January 20 02  
*Tony Dalbo*  
**LAND INFORMATION OFFICE**

(c)(d)(e) Plan view of corner with ties to at least 4 witness monuments. If in disagreement with previously established corner, show the distances between the two corners and also indicate the ties to the disputed corner.



(i) I, EUGENE C. UTTECH, Registered Land Surveyor \*S-1451, hereby certify that the corner location on this record was determined by me or under my direction and control and that this U.S. Public Land Survey Monument Record is correct and complete to the best of my knowledge and belief.



Index No. A-5

*Eugene C. Uttech*  
 Signature

12.20.01  
 Date

CERTIFIED LAND CORNER RESTORATION

Index No. A-5

State of Wisconsin }  
County of Lincoln } ss.

History of original corner establishment:

I....., do hereby  
certify that on the..... day  
of....., 19....., I found  
evidence of the NE  
corner of section 6  
Township 32, North, Range  
5 east, Fourth, Principal Meridian,  
as described hereon; and that from this evidence  
I established a new monument and accessories  
as described hereon to perpetuate the original  
location of this corner.

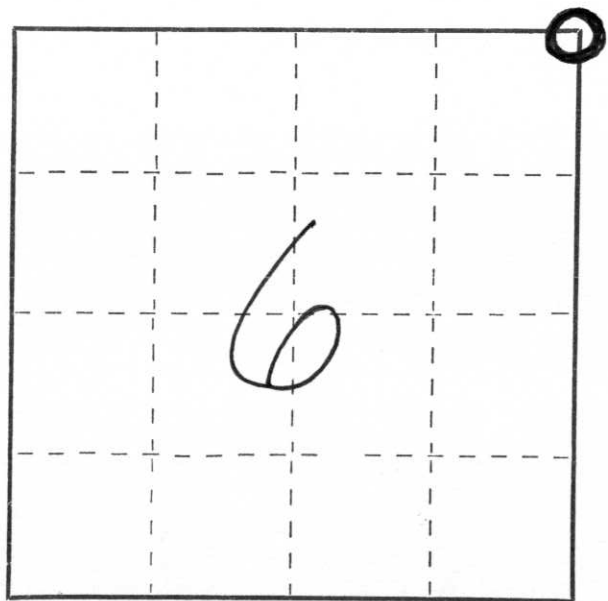
Resident witnesses:

.....  
.....  
.....

Description of corner evidence found: *There is a Fox granite in place, up right about  
one inch below the surface. 2 BT- 13in. Spruce N 48° 30' W 70 ft.  
5in Hemlock S 20° W 35.5 ft.  
From these points to road you will find granite. (There is a  
metal spike one foot east.*

Description of monument and accessories I established to perpetuate the original location of this corner.

*(This is for reference only. The information was  
supplied by Bill Stuth)*



○ = Corner monument restored.

Dated at Merrill, Wis., this 11th day of March, 1983.

Signature Bill Stuth Title land surveyor Registration No.....  
(County Surveyor, Registered Land Surveyor, or other duly authorized official)

Office of Register of Deeds, County of....., I hereby certify that the within  
instrument was filed in this office for record on the..... day of....., 19.....  
at..... o'clock..... M.

.....  
(Register of Deeds)

By..... Deputy









