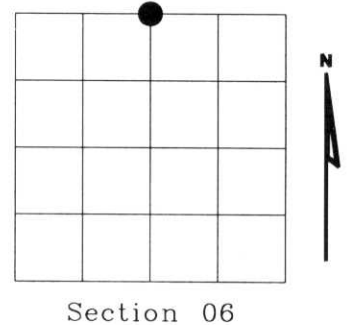


U.S. PUBLIC LAND SURVEY MONUMENT RECORD

NOTE: This form is intended and designed to fulfill all requirements of Wisconsin Administrative Code, Chapter A-E 7.08 U.S. Public Land Survey Monument Record (3)(a)(b)(c)(d)(e)(f)(g)(h)(i). An additional sheet may be added if necessary to conform with said requirements.

(a) Corner location: Township 32 North
 Range 05 East
 Town of HARDING
 LINCOLN County, Wisconsin



Section 06

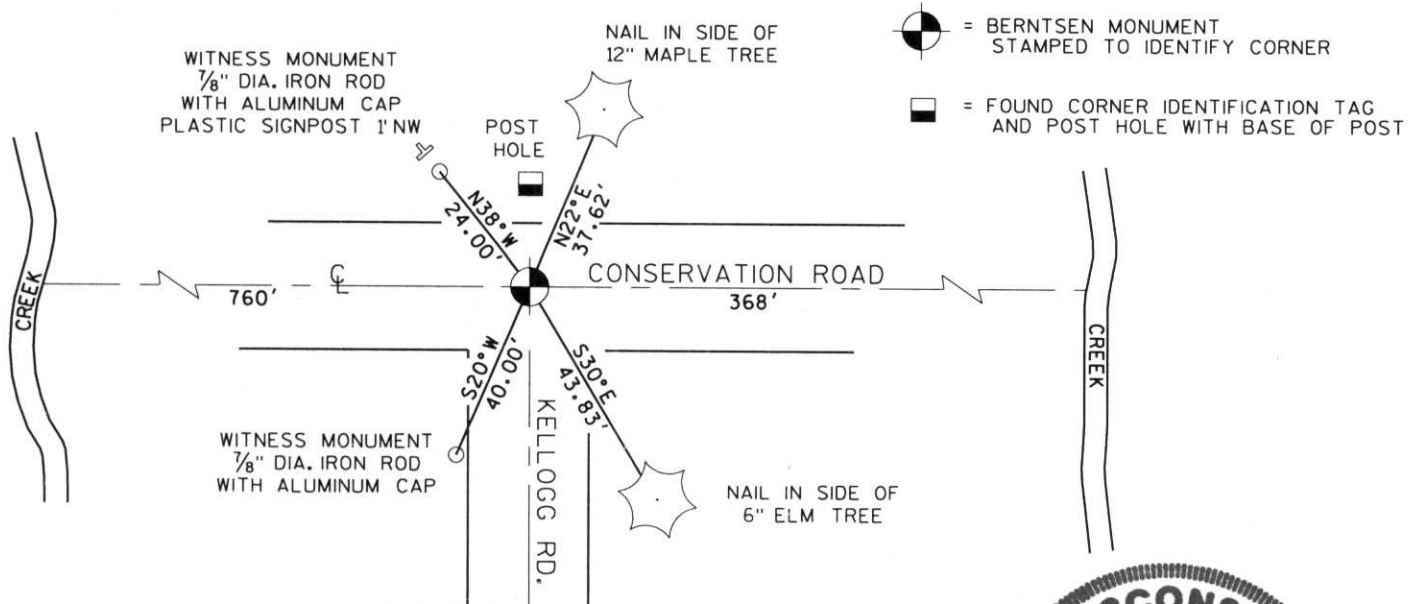
(b)(f)(g)(h) Description of monument found at this corner and if it was accepted, state all evidence (material, testimonial, occupational, plats, records, other monuments) used as a basis for accepting. If not accepted or if nothing was found, state evidence used as basis for establishing location. If reestablished through lost corner proportionate methods, indicate all monuments, distances and directions used to establish. Indicate type of monument found or set and sign post.

1937 - FRANCIS X. FOCHS (NOW FOX) SET STONE MONUMENT AT INTERSECTION OF ROADS 7" BELOW SURFACE. ALSO SET A POST 25' NORTH OF STONE. FIELD NOTES ON FILE IN LINCOLN COUNTY LAND FOREST AND PARK DEPARTMENT

05-01 - IFIND POST HOLE WITH BASE OF POST INTACT AND CORNER IDENTIFICATION TAG SET BY FOX. EXCAVATED AREA 5' X 10' X 7' DEEP USING COUNTY PROVIDED BACKHOE AND OPERATOR AT INTERSECTION OF CONSERVATION ROAD AND KELLOGG ROAD, FOUND NO EVIDENCE OF STONE SET BY FOCHS. SET LINCOLN COUNTY BERNTSEN MONUMENT 25' SOUTH OF POST AND 368 FEET WEST OF CREEK TO THE EAST AND 760' EAST OF CREEK TO THE WEST PER NOTES FROM FRANCIS X. FOCHS 1937. SET BEARING TREES AS NOTED BELOW.

RECEIVED AT LINCOLN COUNTY
 COURTHOUSE THIS 8TH DAY
 OF January 2002
Tony Dahn
 LAND INFORMATION OFFICE

(c)(d)(e) Plan view of corner with ties to at least 4 witness monuments. If in disagreement with previously established corner, show the distances between the two corners and also indicate the ties to the disputed corner.



(i) I, EUGENE C. UTTECH, Registered Land Surveyor *S-1451, hereby certify that the corner location on this record was determined by me or under my direction and control and that this U.S. Public Land Survey Monument Record is correct and complete to the best of my knowledge and belief.



Index No. A-3

Eugene C. Uttech
 Signature

12-20-01
 Date







