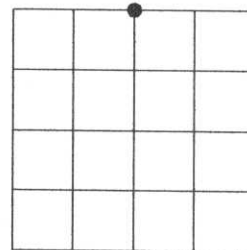


RECEIVED BY LINCOLN COUNTY  
 SURVEYOR THIS 11<sup>TH</sup> DAY  
 OF November 20 04  
Tony Dalk  
 COUNTY SURVEYOR

U.S. PUBLIC LAND SURVEY MONUMENT RECORD

Note: This form is intended and designed to fulfill all requirements of the Wisconsin Administrative Code, Chapter A-E 7.08 U.S. Public Land Monument Record (3)(a)(b)(c)(d)(e)(f)(g)(h)(i). An additional sheet may be added if necessary to conform with said requirements.

(a) CORNER LOCATION: COORDINATES  
 north quarter corner of Section 36 North:  
 Township 33 North East:  
 Range 5 East Control Station:  
 Town of Harding Latitude:  
 County of Lincoln Longitude:  
 Datum Method



SECTION 36

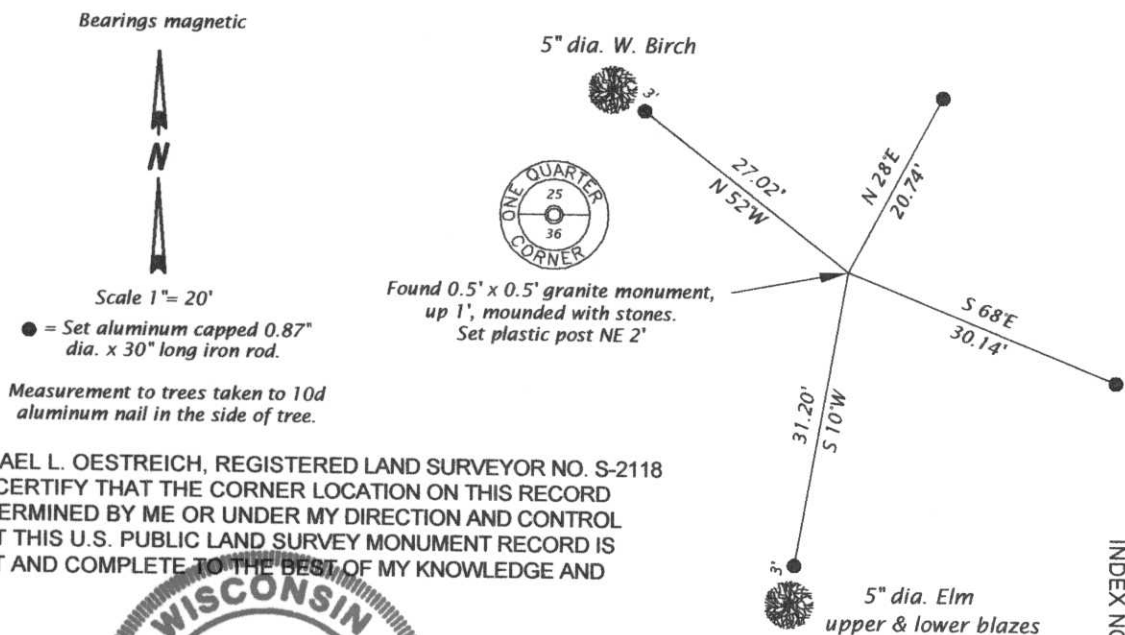
(b) HISTORY OF ORIGINAL CORNER ESTABLISHMENT

Original Surveyor: J.L. Prentice Original B.T.'S  
 Date of Survey: Commenced November 1854 Hemlock 18" dia., S8 1/2°W 220 links  
 Completed November 1854 Hemlock 16" dia., N16°E 40 links

(f)(g)(h) DESCRIPTION OF MONUMENT FOUND AT THIS CORNER AND IF IT WAS ACCEPTED, STATE ALL EVIDENCE (MATERIAL, TESTIMONIAL, OCCUPATIONS, PLATS, RECORDS, OTHER MONUMENTS) USED AS A BASIS FOR ESTABLISHING LOCATION. IF NOT ACCEPTED OF IF NOTHING WAS FOUND, STATE EVIDENCE USED AS BASIS FOR ESTABLISHING LOCATION. IF REESTABLISHED THROUGH LOST CORNER PROPORTIONATE METHODS, INDICATE ALL MONUMENTS, DISTANCES AND DIRECTIONS USED TO ESTABLISH. INDICATE TYPE OF MONUMENT AND SIGN POST FOUND OR SET.

Original surveyor: J.L. Prentice, west corrected at 40.04 chains set post for corner to 1/4 section.  
 Francis Fox: date unknown, at 2647.4 set 1/4 stone north 110.1', at north edge of swamp and west of thick blanket of stones. Nothing to witness, mounded high with stones.  
 Michael L. Oestreich: October 2004, recovered 0.5' x 0.5' granite stone with 25 and 36 chiseled on top, and 1/4 chiseled on north side. Set magnet on south side of stone, made new bearing trees and set reference monuments as shown in plan below.

(c)(d)(e) PLAN VIEW OF CORNER WITH TIES TO AT LEAST 4 WITNESS MONUMENTS. IF IN DISAGREEMENT WITH PREVIOUSLY ESTABLISHED CORNER, SHOW THE DISTANCE BETWEEN THE TWO CORNERS AND ALSO INDICATE THE TIES TO THE DISPUTED CORNER.



(i) I, MICHAEL L. OESTREICH, REGISTERED LAND SURVEYOR NO. S-2118 HEREBY CERTIFY THAT THE CORNER LOCATION ON THIS RECORD WAS DETERMINED BY ME OR UNDER MY DIRECTION AND CONTROL AND THAT THIS U.S. PUBLIC LAND SURVEY MONUMENT RECORD IS CORRECT AND COMPLETE TO THE BEST OF MY KNOWLEDGE AND BELIEF.

Michael L. Oestreich  
 SIGNATURE DATE 11/10/04



INDEX NO. V-23