

RECEIVED BY LINCOLN COUNTY
 SURVEYOR THIS 11TH DAY
 OF November 20 04
Tom Dahl
 COUNTY SURVEYOR

U.S. PUBLIC LAND SURVEY MONUMENT RECORD

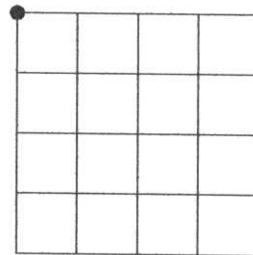
Note: This form is intended and designed to fulfill all requirements of the Wisconsin Administrative Code, Chapter A-E 7.08 U.S. Public Land Monument Record (3)(a)(b)(c)(d)(e)(f)(g)(h)(i). An additional sheet may be added if necessary to conform with said requirements.

(a) CORNER LOCATION:

northwest corner of Section 36
 Township 33 North
 Range 5 East
 Town of Harding
 County of Lincoln

COORDINATES

North:
 East:
 Control Station:
 Latitude:
 Longitude:
 Datum Method



SECTION 36

(b) HISTORY OF ORIGINAL CORNER ESTABLISHMENT

Original Surveyor: J.L. Prentice

Original B.T.'S

Date of Survey: Commenced November 1854
 Completed November 1854

Hemlock 16" dia., S59°W 42 links
 Hemlock 12" dia., S20°E 32 links
 Hemlock 12" dia., N19°E 28 links
 Hemlock 12" dia., N12°W 47 links

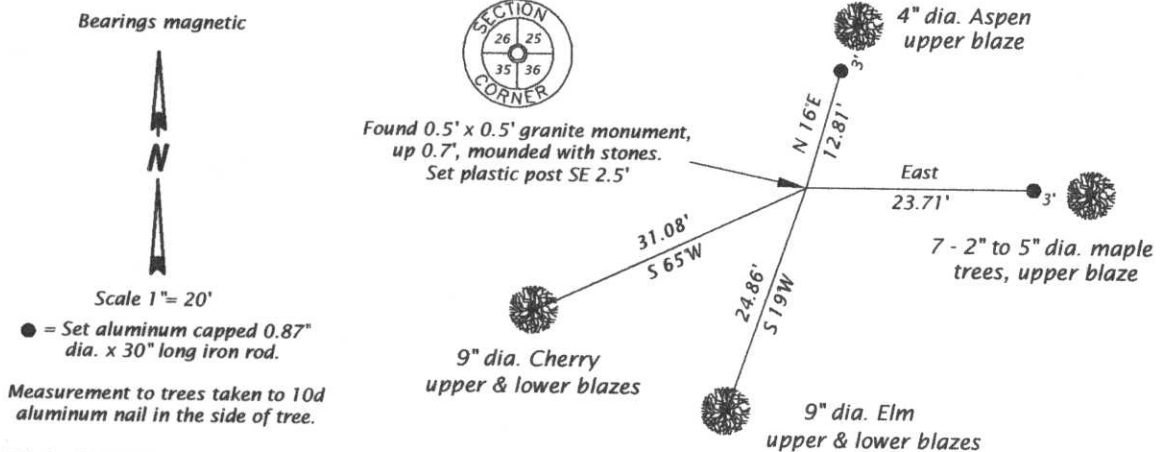
(f)(g)(h) DESCRIPTION OF MONUMENT FOUND AT THIS CORNER AND IF IT WAS ACCEPTED, STATE ALL EVIDENCE (MATERIAL, TESTIMONIAL, OCCUPATIONS, PLATS, RECORDS, OTHER MONUMENTS) USED AS A BASIS FOR ESTABLISHING LOCATION. IF NOT ACCEPTED OF IF NOTHING WAS FOUND, STATE EVIDENCE USED AS BASIS FOR ESTABLISHING LOCATION. IF REESTABLISHED THROUGH LOST CORNER PROPORTIONATE METHODS, INDICATE ALL MONUMENTS, DISTANCES AND DIRECTIONS USED TO ESTABLISH. INDICATE TYPE OF MONUMENT AND SIGN POST FOUND OR SET.

Original surveyor: J.L. Prentice, north 80 chains set post for corner to sections 25, 26, 35 & 36.

Francis Fox: date unknown, at 5302.5 turned right off back tangent, (NW) 55°30' 119.8' to old charred stake. Stumps correspond to original witnesses. Nothing to witness, mounded high with stones.

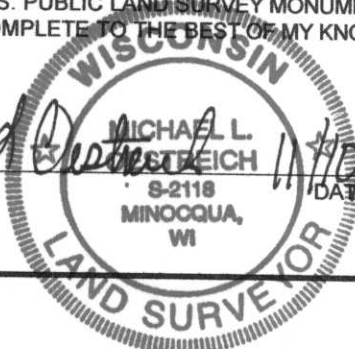
Michael L. Oestreich: October 2004, recovered 0.5' x 0.5' granite stone up 0.7', with 25, 26, 35 & 36 is chiseled in top of granite stone. Set magnet on southeast side of stone, made new bearing trees and set reference monuments as shown in plan below.

(c)(d)(e) PLAN VIEW OF CORNER WITH TIES TO AT LEAST 4 WITNESS MONUMENTS. IF IN DISAGREEMENT WITH PREVIOUSLY ESTABLISHED CORNER, SHOW THE DISTANCE BETWEEN THE TWO CORNERS AND ALSO INDICATE THE TIES TO THE DISPUTED CORNER.



(i) I, MICHAEL L. OESTREICH, REGISTERED LAND SURVEYOR NO. S-2118 HEREBY CERTIFY THAT THE CORNER LOCATION ON THIS RECORD WAS DETERMINED BY ME OR UNDER MY DIRECTION AND CONTROL AND THAT THIS U.S. PUBLIC LAND SURVEY MONUMENT RECORD IS CORRECT AND COMPLETE TO THE BEST OF MY KNOWLEDGE AND BELIEF.

Michael L. Oestreich
 SIGNATURE
 MICHAEL L. OESTREICH
 S-2118
 MINOCQUA, WI
 DATE 11/10/04



INDEX NO. 4-21