

U.S. PUBLIC LAND SURVEY MONUMENT RECORD

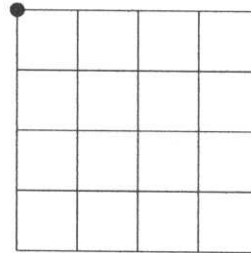
Note: This form is intended and designed to fulfill all requirements of the Wisconsin Administrative Code, Chapter A-E 7.08 U.S. Public Land Monument Record (3)(a)(b)(c)(d)(e)(f)(g)(h)(i). An additional sheet may be added if necessary to conform with said requirements.

(a) CORNER LOCATION:

northwest corner of Section 35
 Township 33 North
 Range 5 East
 Town of Harding
 County of Lincoln

COORDINATES

North:
 East:
 Control Station:
 Latitude:
 Longitude:
 Datum Method



SECTION 35

(b) HISTORY OF ORIGINAL CORNER ESTABLISHMENT

Original Surveyor: J.L. Prentice
 Date of Survey: Commenced Nov. 1854
 Completed Nov. 1854

Original B.T.'S
 Birch 12" dia., S52°E 7 links
 Birch 9" dia., S65°W 51 links

Birch 13" dia., N64°W 59 links
 Ash 10" dia., N64°E 21 links

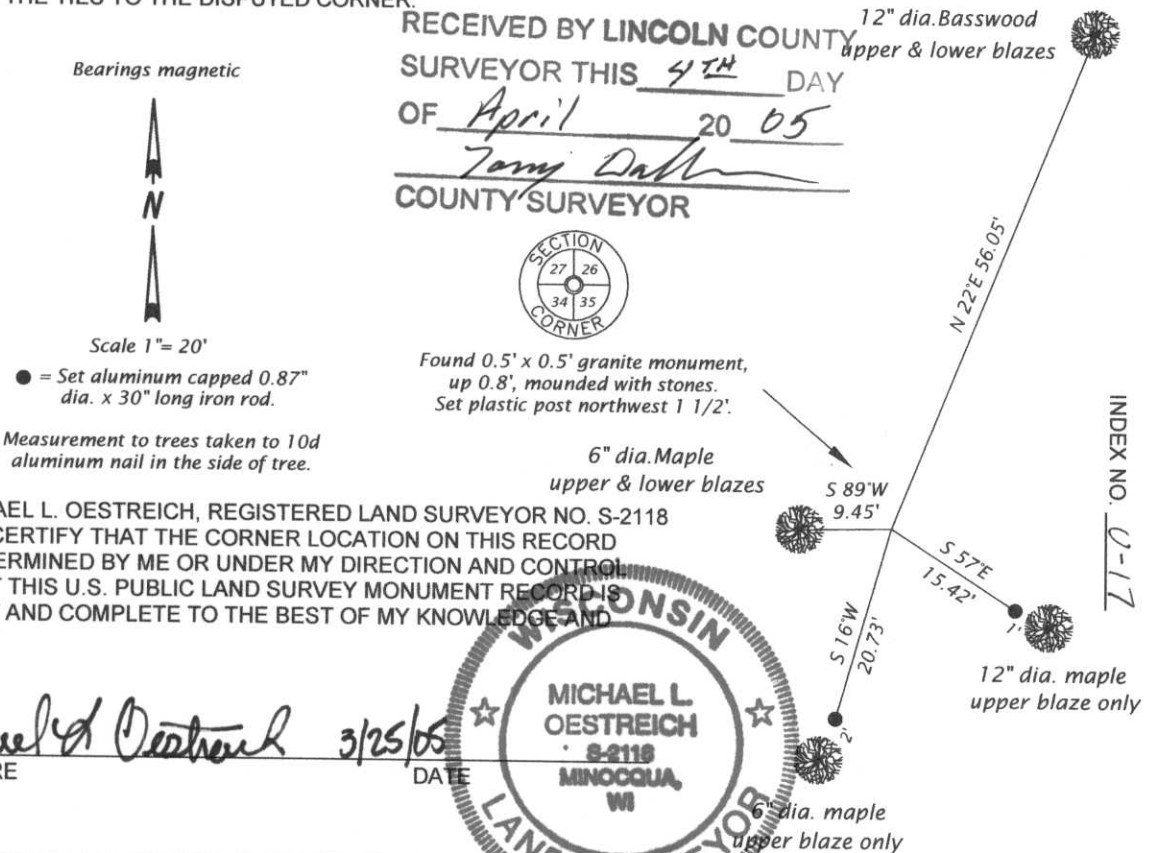
(f)(g)(h) DESCRIPTION OF MONUMENT FOUND AT THIS CORNER AND IF IT WAS ACCEPTED, STATE ALL EVIDENCE (MATERIAL, TESTIMONIAL, OCCUPATIONS, PLATS, RECORDS, OTHER MONUMENTS) USED AS A BASIS FOR ESTABLISHING LOCATION. IF NOT ACCEPTED OF IF NOTHING WAS FOUND, STATE EVIDENCE USED AS BASIS FOR ESTABLISHING LOCATION. IF REESTABLISHED THROUGH LOST CORNER PROPORTIONATE METHODS, INDICATE ALL MONUMENTS, DISTANCES AND DIRECTIONS USED TO ESTABLISH. INDICATE TYPE OF MONUMENT AND SIGN POST FOUND OR SET.

Original Surveyor: Jackson L. Prentice, north between Sections 34 and 35 at 80 chains set corner post for Section Corner.

Francis Fox: date unknown, south between Sections 26 and 27 at 5174.4 end of random, stone is south 47.05' and west 57.8'.

Michael L. Oestreich: March 2005, recovered 0.5' x 0.5' granite stone, with 26, 27, 34 and 35 chiseled on top, mounded with stones. Made new bearing trees and set reference monuments as shown in plan below.

(c)(d)(e) PLAN VIEW OF CORNER WITH TIES TO AT LEAST 4 WITNESS MONUMENTS. IF IN DISAGREEMENT WITH PREVIOUSLY ESTABLISHED CORNER, SHOW THE DISTANCE BETWEEN THE TWO CORNERS AND ALSO INDICATE THE TIES TO THE DISPUTED CORNER.



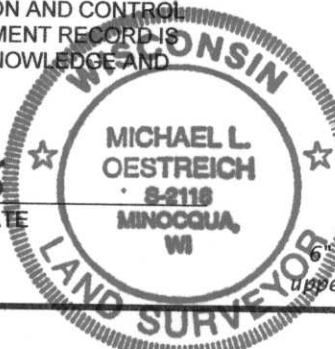
RECEIVED BY LINCOLN COUNTY
 SURVEYOR THIS 4TH DAY
 OF April 20 05
Tony Dahl
 COUNTY SURVEYOR



Found 0.5' x 0.5' granite monument, up 0.8', mounded with stones. Set plastic post northwest 1 1/2'.

(i) I, MICHAEL L. OESTREICH, REGISTERED LAND SURVEYOR NO. S-2118 HEREBY CERTIFY THAT THE CORNER LOCATION ON THIS RECORD WAS DETERMINED BY ME OR UNDER MY DIRECTION AND CONTROL AND THAT THIS U.S. PUBLIC LAND SURVEY MONUMENT RECORD IS CORRECT AND COMPLETE TO THE BEST OF MY KNOWLEDGE AND BELIEF.

Michael L. Oestreich 3/25/05
 SIGNATURE DATE



INDEX NO. U-17