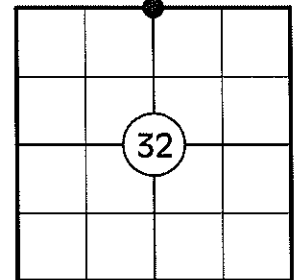


# U.S. PUBLIC LAND SURVEY MONUMENT RECORD

NOTE: THIS FORM IS INTENDED AND DESIGNED TO FULFILL ALL REQUIREMENTS OF WISCONSIN ADMINISTRATIVE CODE CHAPTER A-E 7.08 U.S. PUBLIC LAND SURVEY MONUMENT RECORD (3) (a)(b)(c)(d)(e)(f)(g)(h)(i). AN ADDITIONAL SHEET MAY BE ADDED IF NECESSARY TO CONFIRM WITH SAID REQUIREMENTS.

(a) CORNER LOCATION:

N 1/4 CORNER OF SECTION 32  
 TOWNSHIP 33 NORTH  
 RANGE 5 EAST  
 TOWN OF HARDING  
 COUNTY OF LINCOLN



(b) HISTORY OF ORIGINAL CORNER:

ORIGINAL SURVEYOR: JACKSON L. PRENTICE  
 DATE OF SURVEY: NOVEMBER, 1854

ORIGINAL BEARING TREES: 10" SPRUCE - S74°E, 56 LKS  
 9" SOFT MAPLE - N86°W, 36 LKS

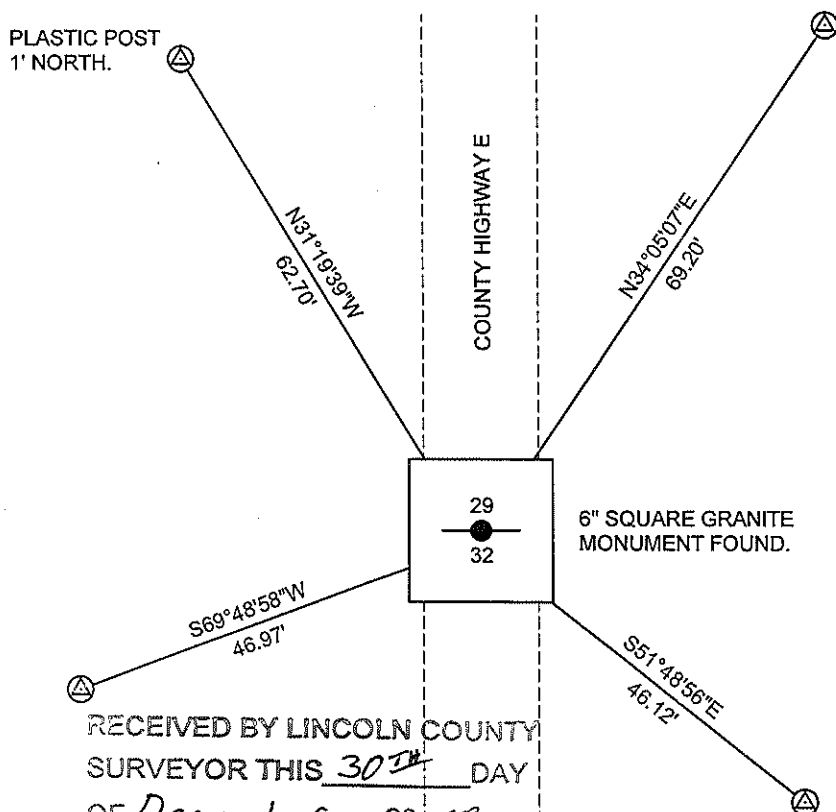
(f)(g)(h) DESCRIPTION OF MONUMENT FOUND AT THIS CORNER AND IF IT WAS ACCEPTED STATE ALL EVIDENCE (MATERIAL, TESTIMONIAL, OCCUPATIONAL, PLATS, RECORDS, OTHER MONUMENTS) USED AS A BASIS FOR ESTABLISHING LOCATION. IF REESTABLISHING THROUGH LOST CORNER PROPORTIONATE METHODS, INDICATE ALL MONUMENTS, DISTANCES, AND DIRECTIONS USED TO ESTABLISH. INDICATE TYPE OF MONUMENT AND SIGN POST FOUND OR SET.

1854: JACKSON L. PRENTICE SET THE ORIGINAL 1/4 CORNER POST.

1930'S: FRANCIS FOX SET A STONE MONUMENT 8" BELOW TOP OF ROAD AT THE CENTERLINE OF COUNTY HIGHWAY E.

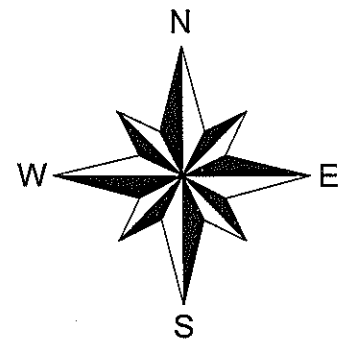
11/08/2010: I FOUND FOX'S GRANITE MONUMENT 1 1/2' BELOW GRADE. I SET A REBAR ALONG THE SOUTH SIDE OF THE MONUMENT AND REFERENCED THE CORNER AS SHOWN BELOW.

(c)(d)(e) PLAN VIEW OF CORNER WITH TIES TO AT LEAST FOUR WITNESSES. IF IN DISAGREEMENT WITH PREVIOUSLY ESTABLISHED CORNER, SHOW THE DISTANCES BETWEEN THE TWO CORNERS AND ALSO INDICATE THE TIE TO THE DISPUTED CORNER.



△ 3/4" DIA. CAPPED REBAR SET

LINCOLN COUNTY GRID

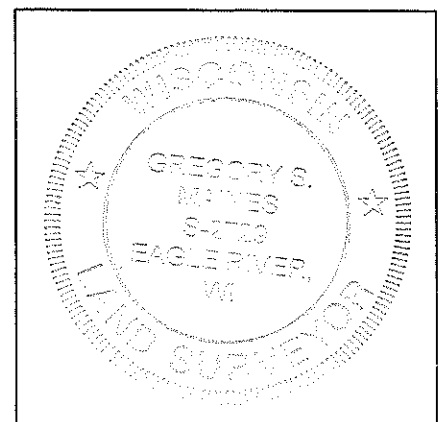


NOT TO SCALE  
 DISTANCES TO BT'S ARE TO NAIL IN SIDE

RECEIVED BY LINCOLN COUNTY  
 SURVEYOR THIS 30<sup>TH</sup> DAY  
 OF December 2010  
*Tony Dallen*  
 COUNTY SURVEYOR

I GREGORY S. MAINES, REGISTERED LAND SURVEYOR NO. 2729,  
 HEREBY CERTIFY THAT THE CORNER LOCATION ON THIS RECORD  
 WAS REFERENCED BY ME OR UNDER MY DIRECTION AND CONTROL  
 AND THAT THIS U.S. PUBLIC LAND SURVEY MONUMENT RECORD IS  
 COMPLETE TO THE BEST OF MY KNOWLEDGE AND BELIEF.

*Gregory S. Maines* 12/29/10  
 SIGNATURE



INDEX NO. U-7

**NORTH 1/4 CORNER OF SECTION 32, T33N, R05E**

**6" SQ. GRANITE MONUMENT FOUND**



**FACING NORTH**



**FACING SOUTH**



**FACING EAST**





**FACING WEST**

