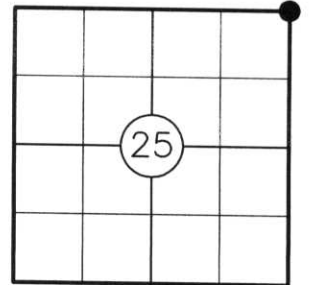


U.S. PUBLIC LAND SURVEY MONUMENT RECORD

NOTE: THIS FORM IS INTENDED AND DESIGNED TO FULFILL ALL REQUIREMENTS OF WISCONSIN ADMINISTRATIVE CODE CHAPTER A-E 7.08 U.S. PUBLIC LAND SURVEY MONUMENT RECORD (3) (a)(b)(c)(d)(e)(f)(g)(h)(i). AN ADDITIONAL SHEET MAY BE ADDED IF NECESSARY TO CONFIRM WITH SAID REQUIREMENTS.

(a) CORNER LOCATION:

NE CORNER OF SECTION 25
TOWNSHIP 33 NORTH
RANGE 5 EAST
TOWN OF HARDING
COUNTY OF LINCOLN



(b) HISTORY OF ORIGINAL CORNER:

ORIGINAL SURVEYOR: J.M. MARSH
DATE OF SURVEY: COMMENCED: JULY, 1851
COMPLETED: AUGUST, 1851

ORIGINAL BEARING TREES: 14" BIRCH - S01°E, 21 LKS.
8" BIRCH - S50°W 22 LKS.
12" BIRCH - N03°W, 31 LKS.
10" BIRCH - N03°E, 13 LKS.

(f)(g)(h) DESCRIPTION OF MONUMENT FOUND AT THIS CORNER AND IF IT WAS ACCEPTED STATE ALL EVIDENCE (MATERIAL, TESTIMONIAL, OCCUPATIONAL, PLATS, RECORDS, OTHER MONUMENTS) USED AS A BASIS FOR ESTABLISHING LOCATION. IF REESTABLISHING THROUGH LOST CORNER PROPORTIONATE METHODS, INDICATE ALL MONUMENTS, DISTANCES, AND DIRECTIONS USED TO ESTABLISH. INDICATE TYPE OF MONUMENT AND SIGN POST FOUND OR SET.

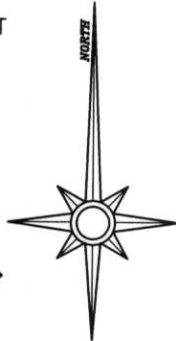
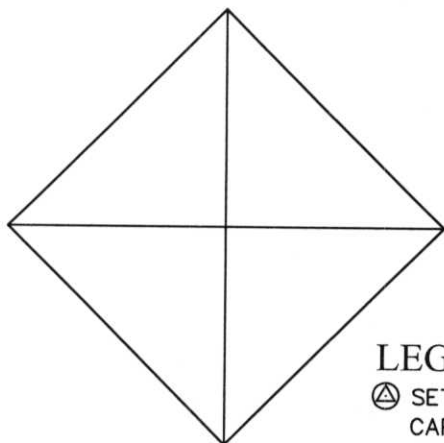
1930'S: FRANCIS X. FOX SET STONE MONUMENT AT THE CENTERLINE OF C.T.H. "E", 12" BELOW TOP OF ROAD. SET LOCATION POST 23.0' (ILLEGIBLE DISTANCE) NORTH PER NOTES FILED IN THE LINCOLN COUNTY COURTHOUSE. FOX ALSO NOTES THERE WAS NOTHING TO WITNESS.

1941: PLAT OF SURVEY BY FRANCIS X. FOX FOR THE TOWN OF ROCK FALLS.

2004: FOUND AND ACCEPTED 6" X 6" GRANITE STONE MONUMENT IN PLACE 3' BELOW THE SURFACE OF C.T.H. "E" IN GOOD CONDITION WITH A 1/2" REBAR ALONG NORTH SIDE OF MONUMENT. THE LOCATION IS 1.5' SOUTH OF CENTERLINE. I SET 4 LINCOLN COUNTY ALUMINUM CAPPED REBAR REFERENCE MONUMENTS AS SHOWN BELOW. SET CARSONITE POST 1' NORTH OF SOUTHEASTERLY MONUMENT.

(c)(d)(e) PLAN VIEW OF CORNER WITH TIES TO AT LEAST FOUR WITNESSES. IF IN DISAGREEMENT WITH PREVIOUSLY ESTABLISHED CORNER, SHOW THE DISTANCES BETWEEN THE TWO CORNERS AND ALSO INDICATE THE TIE TO THE DISPUTED CORNER.

6" X 6" GRANITE STONE MONUMENT

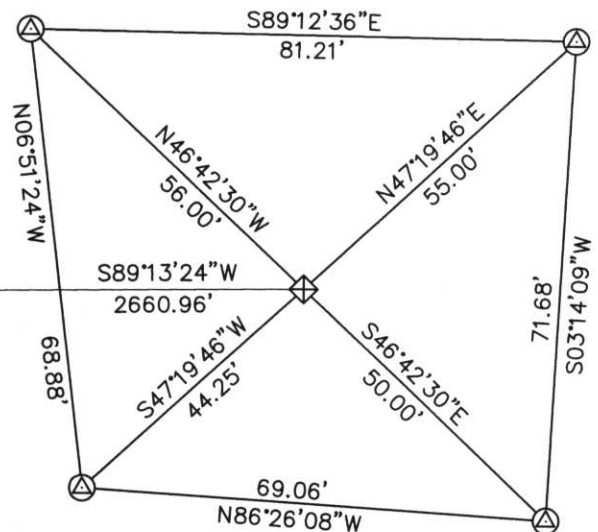


N 1/4 CORNER
SURVEY SPIKE

NOT TO SCALE

LEGEND

⊙ SET 7/8" X 30" ALUMINUM CAPPED REBAR

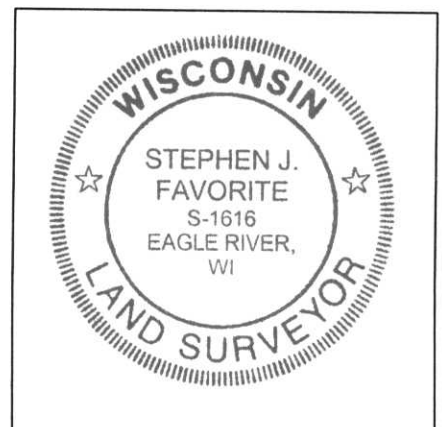


RECEIVED BY LINCOLN COUNTY SURVEYOR THIS 14TH DAY OF December 20 04
Tom Dahl
COUNTY SURVEYOR

I STEPHEN J. FAVORITE, REGISTERED LAND SURVEYOR NO. 1616, HEREBY CERTIFY THAT THE CORNER LOCATION ON THIS RECORD WAS REFERENCED BY ME OR UNDER MY DIRECTION AND CONTROL AND THAT THIS U.S. PUBLIC LAND SURVEY MONUMENT RECORD IS COMPLETE TO THE BEST OF MY KNOWLEDGE AND BELIEF.

Stephen J. Favorite
SIGNATURE

12-10-04
DATE



INDEX NO.

Q-25