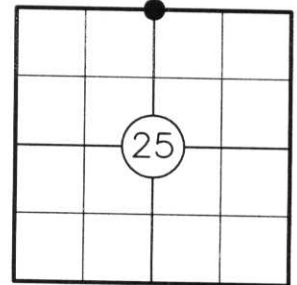


U.S. PUBLIC LAND SURVEY MONUMENT RECORD

NOTE: THIS FORM IS INTENDED AND DESIGNED TO FULFILL ALL REQUIREMENTS OF WISCONSIN ADMINISTRATIVE CODE CHAPTER A-E 7.08 U.S. PUBLIC LAND SURVEY MONUMENT RECORD (3) (a)(b)(c)(d)(e)(f)(g)(h)(i). AN ADDITIONAL SHEET MAY BE ADDED IF NECESSARY TO CONFIRM WITH SAID REQUIREMENTS.

(a) CORNER LOCATION:

N1/4 CORNER OF SECTION 25
 TOWNSHIP 33 NORTH
 RANGE 5 EAST
 TOWN OF HARDING
 COUNTY OF LINCOLN



(b) HISTORY OF ORIGINAL CORNER:

ORIGINAL SURVEYOR: JACKSON L. PRENTICE
 DATE OF SURVEY: COMMENCED: NOVEMBER, 1854
 COMPLETED: NOVEMBER, 1854

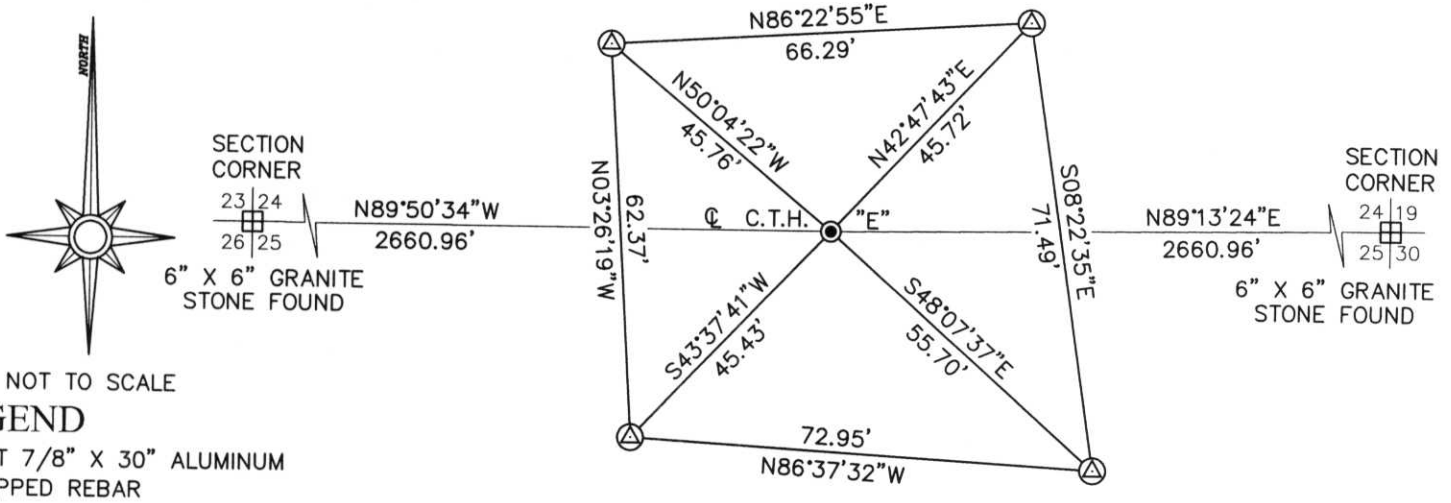
ORIGINAL BEARING TREES: 9" ASH - S30°E, 32 LKS.
 10" BIRCH - N15°W, 30 LKS.

(f)(g)(h) DESCRIPTION OF MONUMENT FOUND AT THIS CORNER AND IF IT WAS ACCEPTED STATE ALL EVIDENCE (MATERIAL, TESTIMONIAL, OCCUPATIONAL, PLATS, RECORDS, OTHER MONUMENTS) USED AS A BASIS FOR ESTABLISHING LOCATION. IF REESTABLISHING THROUGH LOST CORNER PROPORTIONATE METHODS, INDICATE ALL MONUMENTS, DISTANCES, AND DIRECTIONS USED TO ESTABLISH. INDICATE TYPE OF MONUMENT AND SIGN POST FOUND OR SET.

1930'S: FRANCIS X. FOX SET STONE MONUMENT AT THE CENTERLINE OF C.T.H. "E", 8" BELOW TOP OF ROAD. SET LOCATION POST 20.0' NORTH PER NOTES FILED IN THE LINCOLN COUNTY COURTHOUSE.

2004: EXCAVATED THE CENTERLINE OF C.T.H. "E" DOWN TO 6.5' BELOW THE ROAD SURFACE BUT DID NOT RECOVER FOX'S GRANITE STONE. I SINGLE PROPORTIONED BETWEEN THE NORTHEAST AND NORTHWEST SECTION CORNERS OF SECTION 25 AND OFFSET THE POSITION TO THE EXISTING CENTERLINE OF C.T.H. "E". THIS LOCATION COINCIDES WITH FOX'S CREEK CALLS TO THE EAST AND WEST OF THE NORTH 1/4 CORNER. SET A SURVEY SPOIKE IN THE CENTERLINE OF C.T.H. "E" AND SET 4 LINCOLN COUNTY ALUMINUM CAPPED REBAR REFERENCE MONUMENTS AS SHOWN BELOW. SET CARSONITE POST 1' SOUTH OF NORTHWESTERLY REFERENCE MONUMENT.

(c)(d)(e) PLAN VIEW OF CORNER WITH TIES TO AT LEAST FOUR WITNESSES. IF IN DISAGREEMENT WITH PREVIOUSLY ESTABLISHED CORNER, SHOW THE DISTANCES BETWEEN THE TWO CORNERS AND ALSO INDICATE THE TIE TO THE DISPUTED CORNER.



NOT TO SCALE
LEGEND
 ⊙ SET 7/8" X 30" ALUMINUM CAPPED REBAR

RECEIVED BY LINCOLN COUNTY SURVEYOR THIS 14TH DAY OF December 20 04
Tony Dalk
 COUNTY SURVEYOR



INDEX NO. Q-23

I STEPHEN J. FAVORITE, REGISTERED LAND SURVEYOR NO. 1616, HEREBY CERTIFY THAT THE CORNER LOCATION ON THIS RECORD WAS REFERENCED BY ME OR UNDER MY DIRECTION AND CONTROL AND THAT THIS U.S. PUBLIC LAND SURVEY MONUMENT RECORD IS COMPLETE TO THE BEST OF MY KNOWLEDGE AND BELIEF.
Stephen J. Favorite
 SIGNATURE 12-10-04
DATE