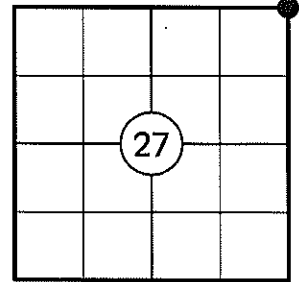


U.S. PUBLIC LAND SURVEY MONUMENT RECORD

NOTE: THIS FORM IS INTENDED AND DESIGNED TO FULFILL ALL REQUIREMENTS OF WISCONSIN ADMINISTRATIVE CODE CHAPTER A-E 7.08 U.S. PUBLIC LAND SURVEY MONUMENT RECORD (3) (a)(b)(c)(d)(e)(f)(g)(h)(i). AN ADDITIONAL SHEET MAY BE ADDED IF NECESSARY TO CONFIRM WITH SAID REQUIREMENTS.

(a) CORNER LOCATION:

NE CORNER OF SECTION 27
 TOWNSHIP 33 NORTH
 RANGE 5 EAST
 TOWN OF HARDING
 COUNTY OF LINCOLN



(b) HISTORY OF ORIGINAL CORNER:

ORIGINAL SURVEYOR: JACKSON L. PRENTICE
 DATE OF SURVEY: NOVEMBER, 1854

ORIGINAL BEARING TREES: 10" ASH - N28°W, 14 LKS
 8" BIRCH - S57°E, 13 LKS
 10" BALSAM - N44°E, 25 LKS
 10" MAPLE - 40 LKS

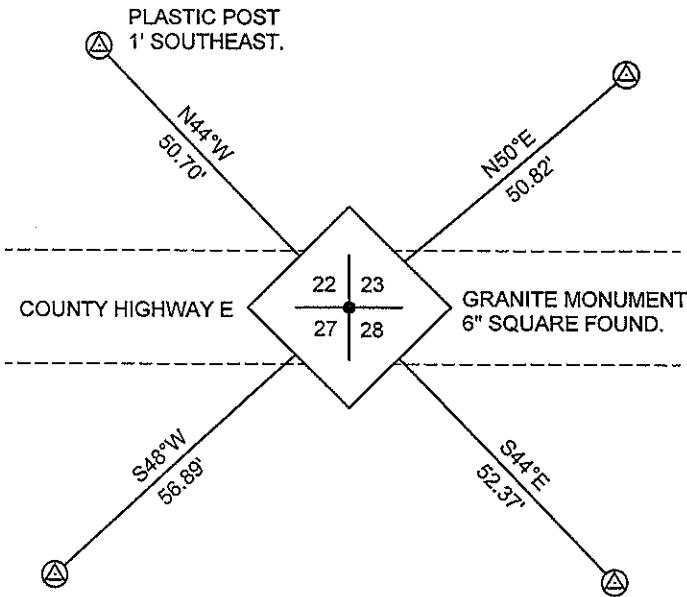
(f)(g)(h) DESCRIPTION OF MONUMENT FOUND AT THIS CORNER AND IF IT WAS ACCEPTED STATE ALL EVIDENCE (MATERIAL, TESTIMONIAL, OCCUPATIONAL, PLATS, RECORDS, OTHER MONUMENTS) USED AS A BASIS FOR ESTABLISHING LOCATION. IF REESTABLISHING THROUGH LOST CORNER PROPORTIONATE METHODS, INDICATE ALL MONUMENTS, DISTANCES, AND DIRECTIONS USED TO ESTABLISH. INDICATE TYPE OF MONUMENT AND SIGN POST FOUND OR SET.

1854: JACKSON L. PRENTICE SET THE ORIGINAL SECTION CORNER POST.

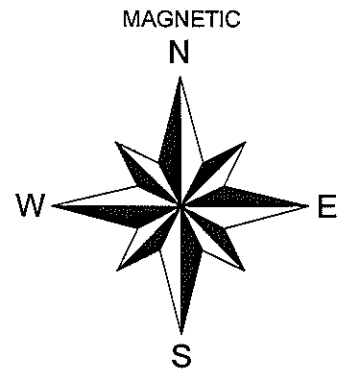
1930'S: FRANCIS FOX SET A STONE MONUMENT 12" BELOW GRADE AT THE CENTERLINE OF COUNTY HIGHWAY E.

11/17/2010: I FOUND FOX'S GRANITE MONUMENT 1' BELOW GRADE. I SET A REBAR ALONG THE WEST SIDE OF THE MONUMENT AND REFERENCED THE CORNER AS SHOWN BELOW.

(c)(d)(e) PLAN VIEW OF CORNER WITH TIES TO AT LEAST FOUR WITNESSES. IF IN DISAGREEMENT WITH PREVIOUSLY ESTABLISHED CORNER, SHOW THE DISTANCES BETWEEN THE TWO CORNERS AND ALSO INDICATE THE TIE TO THE DISPUTED CORNER.



⊙ 3/4" DIA. CAPPED REBAR SET

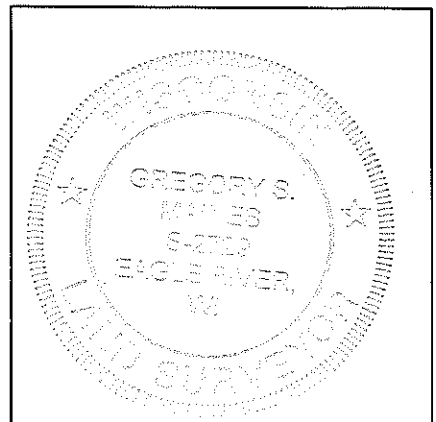


NOT TO SCALE
 DISTANCES TO BT'S ARE TO NAIL IN SIDE

RECEIVED BY LINCOLN COUNTY
 SURVEYOR THIS 30TH DAY
 OF December, 20 10
Zany Dalk
 COUNTY SURVEYOR

I GREGORY S. MAINES, REGISTERED LAND SURVEYOR NO. 2729,
 HEREBY CERTIFY THAT THE CORNER LOCATION ON THIS RECORD
 WAS REFERENCED BY ME OR UNDER MY DIRECTION AND CONTROL
 AND THAT THIS U.S. PUBLIC LAND SURVEY MONUMENT RECORD IS
 COMPLETE TO THE BEST OF MY KNOWLEDGE AND BELIEF.

Gregory S. Maines 12/29/10
 SIGNATURE



INDEX NO. Q - 17