

U S PUBLIC LAND SURVEY MONUMENT RECORD

NOTE: This form is intended and designed to fulfill all requirements of Wisconsin Administrative Code, Chapter A-E 7.08 U.S. Public Land Survey Monument Record (3) (a-i)

A-E 7.08(3)(a) Identity of corner:
 SOUTH 1/4 CORNER SECTION 16,
 TOWNSHIP 33 NORTH,
 RANGE 05 EAST OF THE 4TH PM,
 TOWN OF HARDING,
 COUNTY OF LINCOLN

WISCRS - LINCOLN COUNTY
 N: 179,941.221 USft (179,941.256)
 E: 346,357.238 USft (346,357.278)
 Datum: NAD83 (2011)
 GNSS Method RTK
 Base from GNSS Control set WISCORS VRS



The coordinate value shown has been verified by the average of two or more GPS observations at a markedly different time. Coordinates shown in parenthesis are provided by Lincoln County.

A-E 7.08(3)(b)

Original Surveyor: Jackson L. Prentice

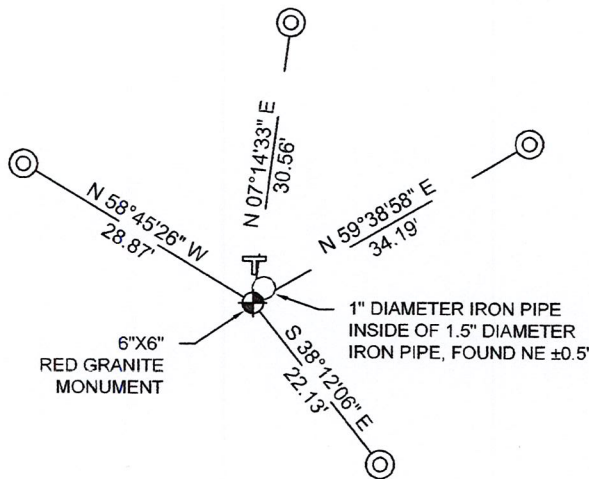
Date of Original Survey	Commenced:	November 9, 1854	Original Accessories:
	Completed:	November 21, 1854	Pine 10 S 45° W 11 Links
			Pine 10 N 83° E 20 Links

1930's -1940's - Surveyor Francis Fuchs (aka Francis Fox) was known to set granite stone monuments in this area.

January 26, 2010 - Surveyor 2729 - Gregory S. Maines - indicate this position as "N: 179941.26, E: 346357.28 coordinates provided by Lincoln County" on Lincoln County Section Summary - Section 16, T 33 N, R 5 E.

November 14, 2022 - While performing the 2022 Lincoln County PLSS Corner Remonumentation and GPS Services project, I found a 6"x 6" red granite stone near the computed position provided by Lincoln County. The monument extends ±14" above grade. I also found a 1.5" diameter iron pipe with a 1" diameter iron pipe inside. Pipe extends ±36" above grade. I established 4 new reference monuments as shown below.

A-E 7.08(3)(c)(d) Plan view of corner with references to at least 4 witness monuments.



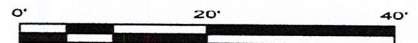
BEARINGS LISTED TO THE NEAREST SECOND ARE REFERENCED TO WISCONSIN COUNTY COORDINATE REFERENCE SYSTEM - LINCOLN COUNTY ZONE. ALL OTHER BEARINGS ARE MAGNETIC



RECEIVED BY LINCOLN COUNTY SURVEYOR THIS 27TH DAY OF December 20 22
Jeffrey DeMuth
 COUNTY SURVEYOR

LEGEND

- 6" x 6" red granite monument, found
- 7/8" diameter X 18" long - iron rod with 2" diameter aluminum cap, set
- Vinyl T-post, set ±3 feet north of corner



A-E 7.08(3)(e) 1854 Surveyor set a post, 1930's - 1940's Surveyor set a granite stone monument, 2010 Surveyor had coordinates. I found a 6"x 6" red granite stone.

A-E 7.08(3)(f) I accept this monument as a FOUND PERPETUATED LOCATION of the corner.

A-E 7.08(3)(g)(h) This corner was not determined through lost-corner-proportionate methods.

A-E 7.08(3)(i) I, Jeffrey L. DeMuth, Professional Land Surveyor No. S-2656, hereby certify that the corner location on this record was determined by the Lincoln County Surveyor, and the monuments found or set as shown hereon were measured by me or under my direction and control, and that this U.S. Public Land Survey Monument Record is correct and complete to the best of my knowledge, and belief.

SIGNATURE

December 14, 2022

DATE



11-11

REPORT

2022-Lincoln County PLSS Corner Remonumentation and GPS Services

Wisconsin Corner Point Identification Number: 43305160020

Surveyor: Jeffrey L. DeMuth – S2656

Corner monument: Found 6" x 6" red granite stone.

Field Book: Cardinal North – Lincoln Co. Remon. – 2022-00

Page: 66

Horizontal Datum: WisCRS – Lincoln County Zone – NAD83(2011)

Date / time of initial measurement:

November 14, 2022 - Start 09:55:27 CST – End 10:25:42 CST

Reference monuments:

4 – Set - 7/8" diameter X 18" long iron rods with 2" diameter Lincoln Co. aluminum cap.

1 - Found – 1.5" diameter iron pipe with a 1" diameter iron pipe inside.

Coordinate Table

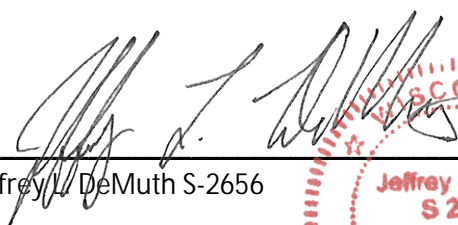
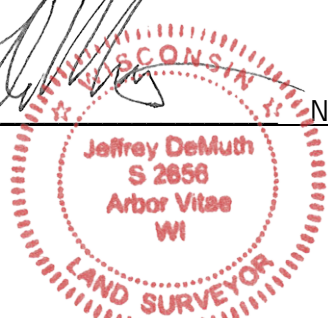
	County Provided	2022 Measurement	Difference
North	179941.256	179941.221	0.04
East	346357.278	346357.238	0.04

Observed coordinates match with existing coordinates within reason.

Request Data Log for more information.

Additional Notes:

Monument extends ±14" above grade.


 Jeffrey L. DeMuth S-2656
 
 November 15, 2022
 Date

43305160020_Mon-N



43305160020_North



43305160020_West



43305160020_South

PLEASE
DO NOT
DISTURB
NEARBY
SURVEY
MARKERS

43305160020



43305160020_East

