

U S PUBLIC LAND SURVEY MONUMENT RECORD

NOTE: This form is intended and designed to fulfill all requirements of Wisconsin Administrative Code, Chapter A-E 7.08 U.S. Public Land Survey Monument Record (3) (a-i)

A-E 7.08(3)(a) Identity of corner:
 SOUTHEAST CORNER SECTION 17,
 TOWNSHIP 33 NORTH,
 RANGE 05 EAST OF THE 4TH PM,
 TOWN OF HARDING,
 COUNTY OF LINCOLN

WISCRS - LINCOLN COUNTY
 N: 180,015.526 USft (180,015.553)
 E: 343,693.450 USft (343,693.732)
 Datum: NAD83 (2011)
 GNSS Method RTK
 Base from GNSS Control set WISCORS VRS



The coordinate value shown has been verified by the average of two or more GPS observations at a markedly different time. Coordinates shown in parenthesis are provided by Lincoln County.

A-E 7.08(3)(b)

Original Surveyor: Jackson L. Prentice

Date of Original Survey Commenced: November 9, 1854
 Completed: November 21, 1854

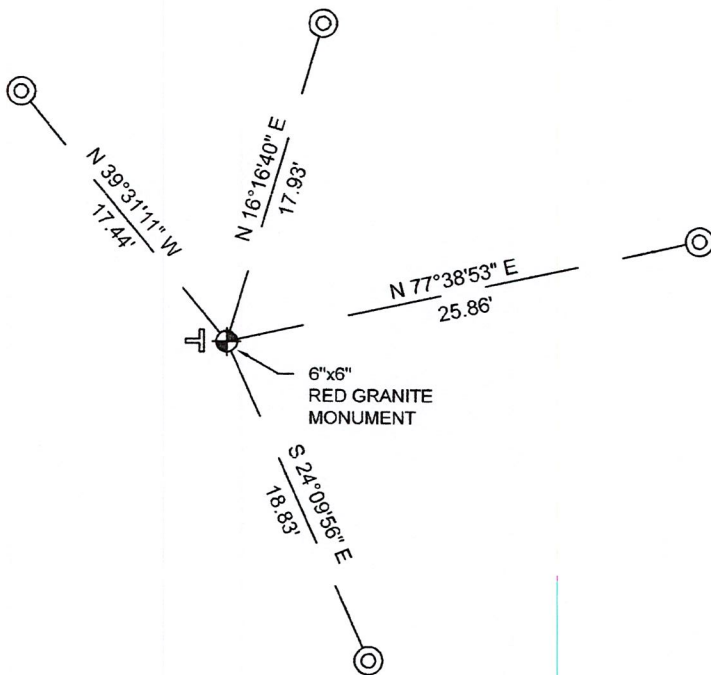
Original Accessories:
 Hemlock 16 N 62° W 36 Links
 Pine 9 S 80° W 29 Links
 Spruce 10 S 60° E 37 Links
 Birch 10 N 75° E 12 Links

1930's -1940's - Surveyor Francis Fuchs (aka Francis Fox) was known to set granite stone monuments in this area.

January 26, 2010 - Surveyor 2729 - Gregory S. Maines - indicate this position as "N: 180015.55, E: 343693.73 coordinates provided by Lincoln County" on Lincoln County Section Summary - Section 16, T 33 N, R 5 E and Section 17, T 33 N, R 5 E.

November 16, 2022 - While performing the 2022 Lincoln County PLSS Corner Remonumentation and GPS Services project, I found a 6"x 6" red granite stone near the computed position provided by Lincoln County. The monument extends ±24" above grade. I established 4 new reference monuments as shown below.

A-E 7.08(3)(c)(d) Plan view of corner with references to at least 4 witness monuments.



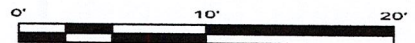
BEARINGS LISTED TO THE NEAREST SECOND ARE REFERENCED TO WISCONSIN COUNTY COORDINATE REFERENCE SYSTEM - LINCOLN COUNTY ZONE. ALL OTHER BEARINGS ARE MAGNETIC



RECEIVED BY LINCOLN COUNTY
 SURVEYOR THIS 27TH DAY
 OF December 20, 22
Jeffrey DeMuth
 COUNTY SURVEYOR

LEGEND

- 6" x 6" red granite monument, found
- 1" diameter X 32" long - aluminum pipe with 2.5" diameter aluminum cap, set
- Vinyl T-post, set ±1.4 feet west of corner



A-E 7.08(3)(e) 1854 Surveyor set a post, 1930's - 1940's Surveyor set a granite stone monument, 2010 Surveyor had coordinates. I found a 6" x 6" red granite stone.

A-E 7.08(3)(f) I accept this monument as a FOUND PERPETUATED LOCATION of the corner.

A-E 7.08(3)(g)(h) This corner was not determined through lost-corner-proportionate methods.

A-E 7.08(3)(i) I, Jeffrey L. DeMuth, Professional Land Surveyor No. S-2656, hereby certify that the corner location on this record was determined by the Lincoln County Surveyor, and the monuments found or set as shown hereon were measured by me or under my direction and control, and that this U.S. Public Land Survey Monument Record is correct and complete to the best of my knowledge, and belief.

SIGNATURE

December 14, 2022

DATE



6-14

REPORT

2022-Lincoln County PLSS Corner Remonumentation and GPS Services

Wisconsin Corner Point Identification Number: 43305170000

Surveyor: Jeffrey L. DeMuth – S2656

Corner monument: Found 6" x 6" red granite stone.

Field Book: Cardinal North – Lincoln Co. Remon. – 2022-00

Page: 67

Horizontal Datum: WisCRS – Lincoln County Zone – NAD83(2011)

Date / time of initial measurement:

November 16, 2022 - Start 10:20:39 CST – End 10:29:25 CST

Reference monuments:

4 – Set - 1" diameter X 32" long aluminum pipe with 2.5" diameter Lincoln Co. aluminum cap.

Coordinate Table

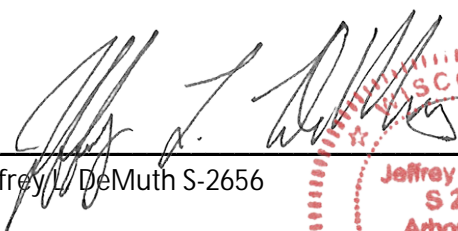
	County Provided	2022 Measurement	Difference
North	180015.553	180015.526	0.03
East	343693.732	343693.450	0.28

Observed coordinates match with existing coordinates within reason.

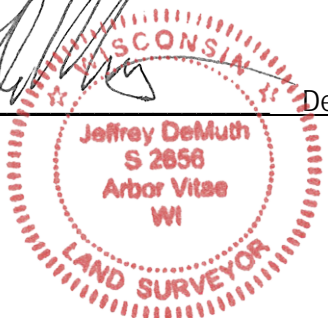
Request Data Log for more information.

Additional Notes:

Corner falls in an alder swamp.


Jeffrey L. DeMuth S-2656

December 01, 2022
Date



43305170000_Mon-N



4330517000_North



4330517000

4330517000_West



4330517000_South



43305170000_East

