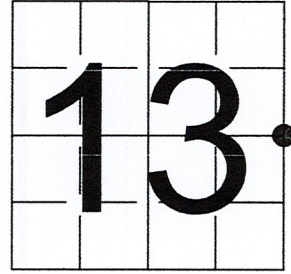


# U S PUBLIC LAND SURVEY MONUMENT RECORD

NOTE: This form is intended and designed to fulfill all requirements of Wisconsin Administrative Code, Chapter A-E 7.08 U.S. Public Land Survey Monument Record (3) (a-i)

A-E 7.08(3)(a) Identity of corner:  
 EAST 1/4 CORNER SECTION 13,  
 TOWNSHIP 33 NORTH,  
 RANGE 05 EAST OF THE 4TH PM,  
 TOWN OF HARDING,  
 COUNTY OF LINCOLN

WISCORS - LINCOLN COUNTY  
 N: 182,496.379 USft (182,496.170)  
 E: 364,913.639 USft (364,913.610)  
 Datum: NAD83 (2011)  
 GNSS Method RTN - Direct  
 GNSS Control WISCORS VRS



The coordinate value shown has been verified by the average of two or more GPS observations at a markedly different time. Coordinates shown in parenthesis are provided by Lincoln County.

A-E 7.08(3)(b)

Original Surveyor: James M. Marsh

Date of Original Survey Commenced: July 21, 1851  
 Completed: August 11, 1851

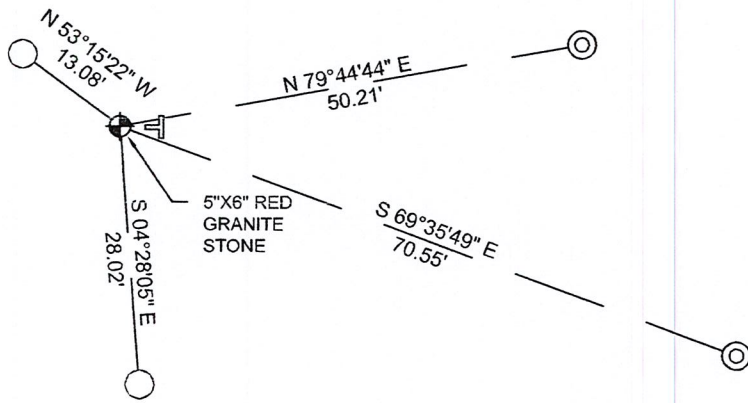
Original Accessories:  
 Tamarack 14 S 80° E 53 Links  
 Balsam 10 S 48° W 25 Links  
 Balsam 16 N 63° W 50 Links  
 Tamarack 14 N 58° E 73 Links

1941 - Francis X. Fox (aka Francis X. Fuchs) - Survey of TWP., 32 & 33 N. ~ R.6 E. Town of Rock Falls - indicates "set corners to all forties on all quarter & section lines" on Map M136A.

February 19, 1980 - Surveyor 1383 - William G. Immich - indicates this position as "granite monument" on Lincoln County map M106B.

October 21, 2022 - While performing the 2022 Lincoln County PLSS Corner Remonumentation and GPS Services project, I found a 5" x 6" red granite stone near the computed position provided by Lincoln County. The stone was leaning south, and I reset plumb. Monument extends ±12" above ground. I established 4 new reference monuments as shown below.

A-E 7.08(3)(c)(d) Plan view of corner with references to at least 4 witness monuments.



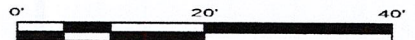
BEARINGS LISTED TO THE NEAREST SECOND ARE REFERENCED TO WISCONSIN COUNTY COORDINATE REFERENCE SYSTEM - LINCOLN COUNTY ZONE. ALL OTHER BEARINGS ARE MAGNETIC



RECEIVED BY LINCOLN COUNTY SURVEYOR THIS 27<sup>TH</sup> DAY OF December 20 22  
*James DeMuth*  
 COUNTY SURVEYOR

## LEGEND

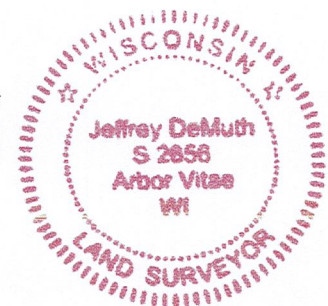
- 5" x 6" red granite monument, found
- 7/8" diameter X 30" long - iron rod with 2" diameter aluminum cap, set
- 1" diameter X 32" long - Berntsen aluminum monument with 2.5" diameter aluminum cap, set
- Vinyl T-post, set ±3.5 feet east of corner



A-E 7.08(3)(e) 1851 Surveyor set a post, 1941 Surveyor set a granite stone monument, 1980 Surveyor found a granite monument. I found a 5" x 6" red granite stone.

A-E 7.08(3)(f) I accept this monument as a FOUND PERPETUATED LOCATION of the corner.  
 A-E 7.08(3)(g)(h) This corner was not determined through lost-corner-proportionate methods.

A-E 7.08(3)(i) I, Jeffrey L. DeMuth, Professional Land Surveyor No. S-2656, hereby certify that the corner location on this record was determined by the Lincoln County Surveyor, and the monuments found or set as shown hereon were measured by me or under my direction and control, and that this U.S. Public Land Survey Monument Record is correct and complete to the best of my knowledge, and belief.



SIGNATURE

December 14, 2022

DATE

1-25

## REPORT

### 2022-Lincoln County PLSS Corner Remonumentation and GPS Services

Wisconsin Corner Point Identification Number: 43305132000

Surveyor: Jeffrey L. DeMuth – S2656

Corner monument: Found 5" x 6" red granite stone.

Field Book: Cardinal North – Lincoln Co. Remon. – 2022-00

Page: 57

Horizontal Datum: WisCRS – Lincoln County Zone – NAD83(2011)

Date / time of initial measurement:

October 21, 2022 - Start 12:40:44 CDT – End 13:09:53 CDT

Reference monuments:

2 – Set - 7/8" diameter X 30" long iron rods with 2" diameter Lincoln Co. aluminum cap.

2 - Set - 1" diameter X 32" long aluminum pipe with 2.5" diameter Lincoln Co. aluminum cap.

#### Coordinate Table

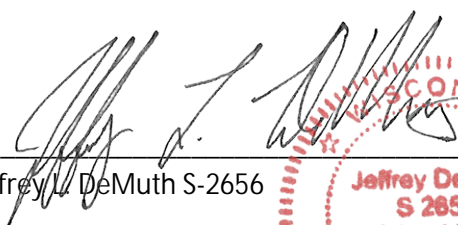
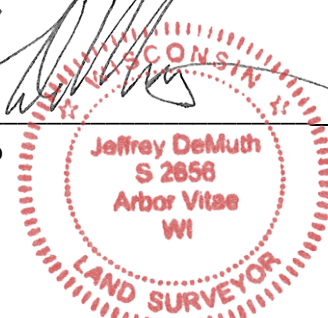
	County Provided	2022 Measurement	Difference
North	182496.170	182496.379	-0.21
East	364913.610	364913.639	-0.03

Observed coordinates match with existing coordinates within reason.

Request Data Log for more information.

Additional Notes:

Found monument leaning south, reset plumb. Monument extends ±12" above grade.

  
 Jeffrey L. DeMuth S-2656
 
 November 15, 2022  
 Date

43305132000\_Mon-N



43305132000\_North



43305132000\_West

PLEASE  
DO NOT  
DISTURB  
NEARBY  
SM  
UR  
R  
V  
E  
E  
YR

IF THE LOCATION  
OF THIS MARKER  
IS UNCHANGED  
PLEASE CONTACT  
US AT  
503-253-7000

43305132000



43305132000\_South



43305132000\_East

