

Attachment to Tie Sheet I-21, T33N, R6E

43306110000

I visited the corner on 5/01/2019 to verify the corner and reference tie monumentation before County Road work. I found all 4 ties from the David Lemke tie sheet (5/30/1997) but no surface monument. All 4 ties cross well and agree with established Coordinates.

Anthony R. Dallman 8/22/19

Anthony R. Dallman, PLS-2405

Lincoln County Surveyor

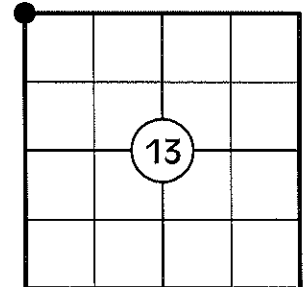


U.S. PUBLIC LAND SURVEY MONUMENT RECORD

NOTE: THIS FORM IS INTENDED AND DESIGNED TO FULFILL ALL REQUIREMENTS OF WISCONSIN ADMINISTRATIVE CODE CHAPTER A-E 7.08 U.S. PUBLIC LAND SURVEY MONUMENT RECORD (3) (a)(b)(c)(d)(e)(f)(g)(h)(i). AN ADDITIONAL SHEET MAY BE ADDED IF NECESSARY TO CONFIRM WITH SAID REQUIREMENTS.

(a) CORNER LOCATION:

NW CORNER OF SECTION 13
 TOWNSHIP 33 NORTH
 RANGE 5 EAST
 TOWN OF HARDING
 COUNTY OF LINCOLN



(b) HISTORY OF ORIGINAL CORNER:

ORIGINAL SURVEYOR: JACKSON L. PRENTICE
 DATE OF SURVEY: NOVEMBER, 1854

ORIGINAL BEARING TREES: 10" MAPLE - S66°W, 14 LKS
 10" HEMLOCK - N16°W, 12 LKS
 8" MAPLE - N7°E, 35 LKS
 9" MAPLE - S72°E, 25 LKS

(f)(g)(h) DESCRIPTION OF MONUMENT FOUND AT THIS CORNER AND IF IT WAS ACCEPTED STATE ALL EVIDENCE (MATERIAL, TESTIMONIAL, OCCUPATIONAL, PLATS, RECORDS, OTHER MONUMENTS) USED AS A BASIS FOR ESTABLISHING LOCATION. IF REESTABLISHING THROUGH LOST CORNER PROPORTIONATE METHODS, INDICATE ALL MONUMENTS, DISTANCES, AND DIRECTIONS USED TO ESTABLISH. INDICATE TYPE OF MONUMENT AND SIGN POST FOUND OR SET.

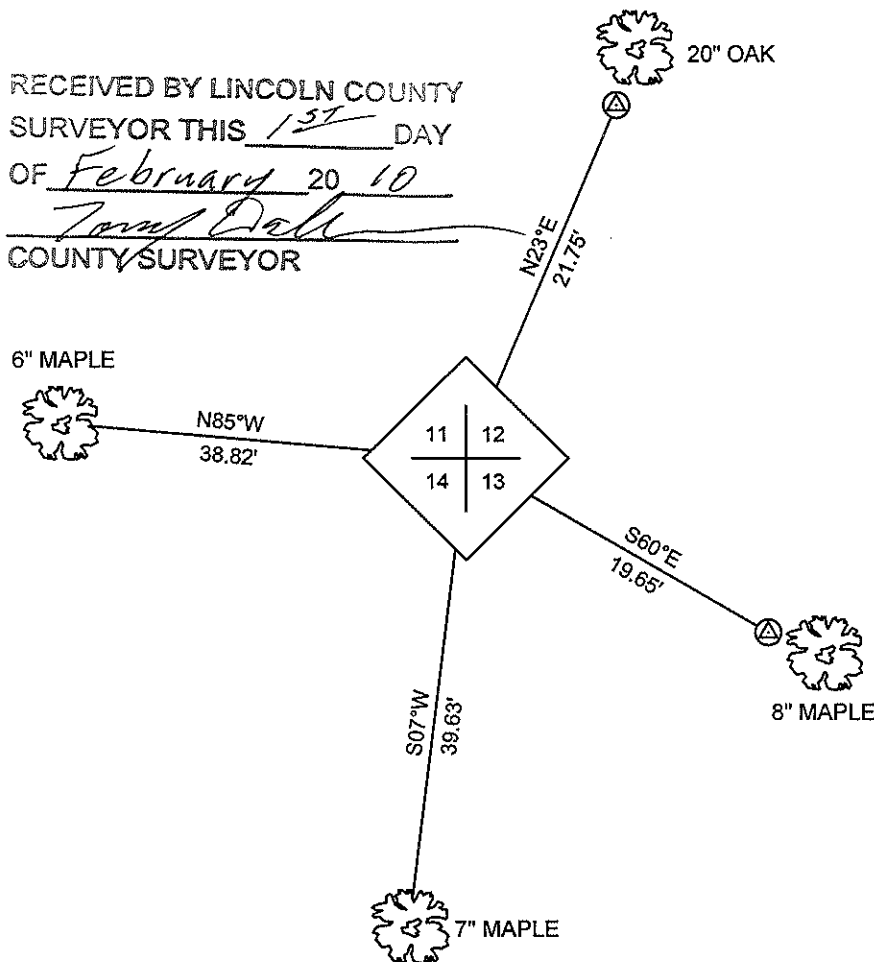
1854: JACKSON L. PRENTICE SET THE ORIGINAL SECTION CORNER POST.

1930'S: FRANCIS FOX SET A STONE MONUMENT MOUNDED WITH STONE IN THE EAST RUT OF AN OLD N-S ROAD.

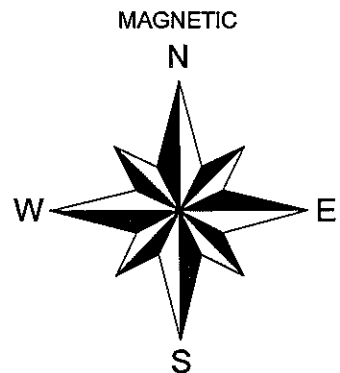
01/19/2010: I FOUND A 6" SQUARE GRANITE MONUMENT IN A ROCK CAIRN. I SET A PLASTIC POST 2' NORTH OF THE MONUMENT, SET A 3/4" DIA. REBAR ALONG THE NORTH SIDE OF THE MONUMENT, MADE TWO BEARING TREES AND SET TWO 3/4" DIA. CAPPED REBAR REFERENCE MONUMENTS AS SHOWN BELOW.

(c)(d)(e) PLAN VIEW OF CORNER WITH TIES TO AT LEAST FOUR WITNESSES. IF IN DISAGREEMENT WITH PREVIOUSLY ESTABLISHED CORNER, SHOW THE DISTANCES BETWEEN THE TWO CORNERS AND ALSO INDICATE THE TIE TO THE DISPUTED CORNER.

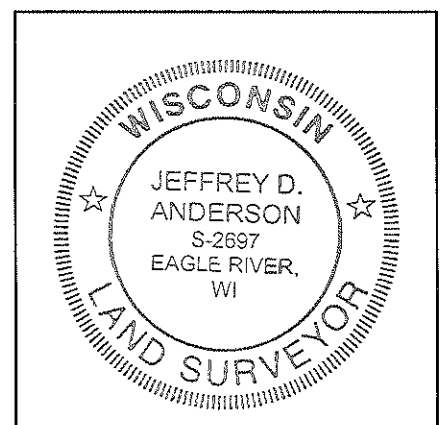
RECEIVED BY LINCOLN COUNTY
 SURVEYOR THIS 15TH DAY
 OF February 20, 10
Jeffrey D. Anderson
 COUNTY SURVEYOR



⊕ 3/4" DIA. CAPPED REBAR SET



NOT TO SCALE
 DISTANCES TO BT'S ARE TO NAIL IN SIDE



INDEX NO. 1-21

I JEFFREY D. ANDERSON, REGISTERED LAND SURVEYOR NO. 2697, HEREBY CERTIFY THAT THE CORNER LOCATION ON THIS RECORD WAS REFERENCED BY ME OR UNDER MY DIRECTION AND CONTROL AND THAT THIS U.S. PUBLIC LAND SURVEY MONUMENT RECORD IS COMPLETE TO THE BEST OF MY KNOWLEDGE AND BELIEF.

Jeffrey D. Anderson 1/27/10
 SIGNATURE

NORTHEAST CORNER, SECTION 14 – 6" SQUARE GRANITE STONE FOUND



FACING NORTH



FACING SOUTH



FACING EAST



FACING WEST

