

U S PUBLIC LAND SURVEY MONUMENT RECORD

NOTE: This form is intended and designed to fulfill all requirements of Wisconsin Administrative Code, Chapter A-E 7.08 U.S. Public Land Survey Monument Record (3) (a-i)

A-E 7.08(3)(a) Identity of corner:
 EAST 1/4 CORNER SECTION 11,
 TOWNSHIP 33 NORTH,
 RANGE 05 EAST OF THE 4TH PM,
 TOWN OF HARDING,
 COUNTY OF LINCOLN

WISCORS - LINCOLN COUNTY
 N: 187,785.130 USft (187,785.051)
 E: 359,657.935 USft (359,657.963)
 Datum: NAD83 (2011)
 GNSS Method RTN - Direct
 GNSS Control WISCORS VRS



The coordinate value shown has been verified by the average of two or more GPS observations at a markedly different time. Coordinates shown in parenthesis are provided by Lincoln County.

A-E 7.08(3)(b)

Original Surveyor: Jackson L. Prentice

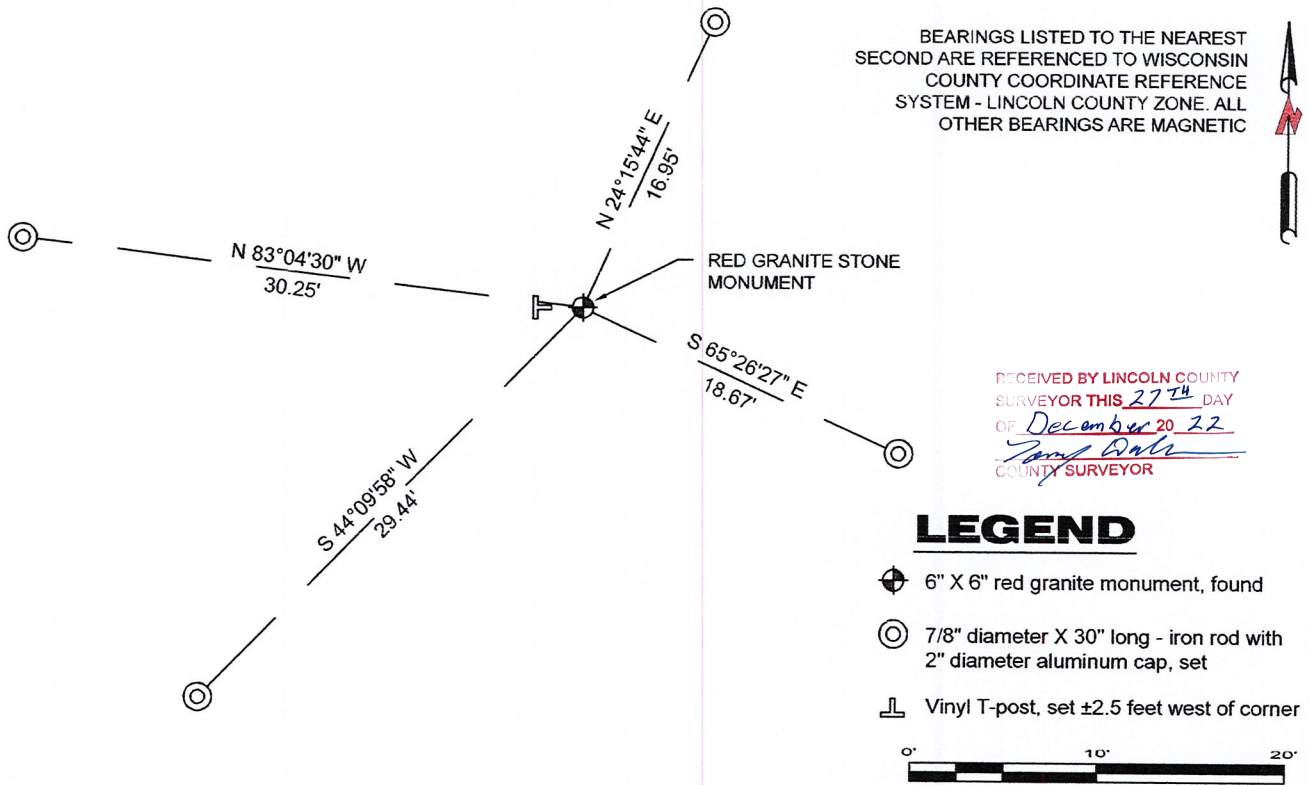
Date of Original Survey	Commenced:	November 9, 1854	Original Accessories:		
	Completed:	November 21, 1854	Maple	8	S 67° E 29 Links
			Birch	10	S 74° W 30 Links

1939 - Surveyor - Francis Fuchs (aka Francis Fox) set granite stones for monuments in this area.

March 8, 2010 - Surveyor 2729 - Gregory S. Maines - indicate this position as "N:187785.05, E:359657.96 coordinates provided by Lincoln County" on Lincoln County Section Summary - Section 11, T 33 N, R 5 E.

September 14, 2022 - While performing the 2022 Lincoln County PLSS Corner Remonumentation and GPS Services project, I found a 6" x 6" red granite monument near the computed position provided by Lincoln County. I established 4 new reference monuments as shown below.

A-E 7.08(3)(c)(d) Plan view of corner with references to at least 4 witness monuments.



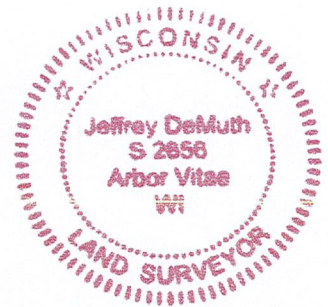
A-E 7.08(3)(e) 1854 Surveyor set a post, 1939 Surveyor set a granite stone, 2010 Surveyor had coordinates. I found a 6" X 6" red granite stone.

A-E 7.08(3)(f) I accept this monument as a FOUND PERPETUATED LOCATION of the corner.

A-E 7.08(3)(g)(h) This corner was not determined through lost-corner-proportionate methods.

A-E 7.08(3)(i) I, Jeffrey L. DeMuth, Professional Land Surveyor No. S-2656, hereby certify that the corner location on this record was determined by the Lincoln County Surveyor, and the monuments found or set as shown hereon were measured by me or under my direction and control, and that this U.S. Public Land Survey Monument Record is correct and complete to the best of my knowledge, and belief.

Jeffrey L. DeMuth
 SIGNATURE
 December 14, 2022
 DATE



G-21



4327 Cole Road, Crandon, WI 54520
James E. Anderson - 715.784.3485
Jeffrey L. DeMuth – 715.482.5237
Cardinal.north@outlook.com

REPORT

2022-Lincoln County PLSS Corner Remonumentation and GPS Services

Wisconsin Corner Point Identification Number: 43305112000

Surveyor: Jeffrey L. DeMuth – S2656

Corner monument: Found 6" x 6" red granite stone.

Field Book: Cardinal North – Lincoln Co. Remon. – 2022-00

Page: 38

Horizontal Datum: WisCRS – Lincoln County Zone – NAD83(2011)

Date / time of initial measurement:

September 14, 2022 - Start 11:24:34 CDT – End 11:49:43 CDT

Reference monuments:

4 – Set - 7/8" diameter X 30" long iron rods with 2" diameter Lincoln Co. aluminum cap.

Coordinate Table

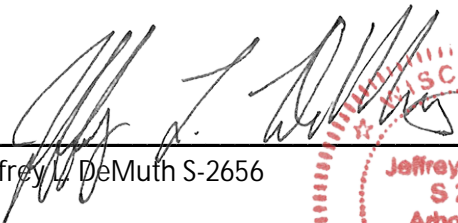
	County Provided	2022 Measurement	Difference
North	187785.051	187785.130	-0.08
East	359657.963	359657.935	0.03

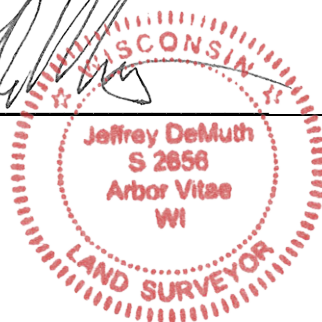
Observed coordinates match with existing coordinates within reason.

Request Data Log for more information.

Additional Notes:

There is a tree line heading west and south from the corner.


Jeffrey L. DeMuth S-2656



October 7, 2022
Date

43305112000_Mon-N



43305112000_North



43305112000_West



43305112000_South



43305112000_East

