

LINCOLN COUNTY U.S. PUBLIC LAND TIE SHEET RECORD



LANDMARK

CORNER INDENTITY: BERNSTEN MONUMENT

LINCOLN COUNTY COORDINATE: N: 190512.540

E: 325205.595

DATE OF SURVEY: October 3, 2008

SURVEY PARTY: Rutzen

SECTION 2
TOWNSHIP 33N
RANGE 4E

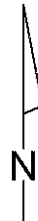
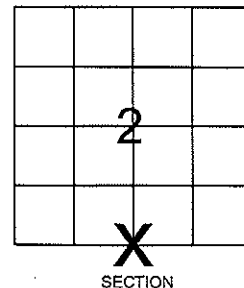
CORNING

CITY, VILLAGE, TOWN

23347

NO.

FOUND ☐
SET ☒
RE-SET ☐
RE-TIED ☐

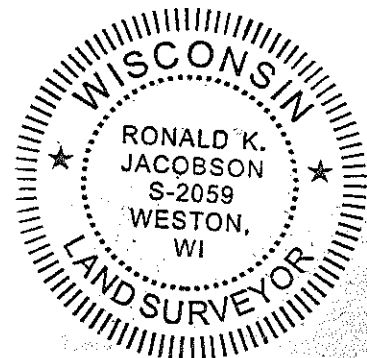


Description of monument found at this corner and if was accepted, state all evidence (material, testimonial, occupational, plats, records, other monuments) used as a basis for accepting. If not accepted or if nothing was found, state evidence used as basis for establishing location. If reestablished through lost corner proportionate methods, indicate all monuments, distances and directions used to establish.

BASIS FOR MONUMENT LOCATION:

(DESCRIBE METHOD OF SURVEY AND CORNER AUTHENTICATION)

No evidence of corner was found. Set Lincoln County Bernsten Monument at Corner. Bernsten Monument was set using single proportion measurement method.



CWE, Inc.

5707 SCHOFIELD AVE.
WESTON, WISCONSIN
54476

PHONE: (715) 359-9400
FAX: (715) 355-4199

general@cwengineers.com
www.cwengineers.com

RECEIVED BY LINCOLN COUNTY
SURVEYOR THIS 17TH DAY
OF October 20 08
Terry D. Rutzen
COUNTY SURVEYOR

CERTIFIED CORRECT:

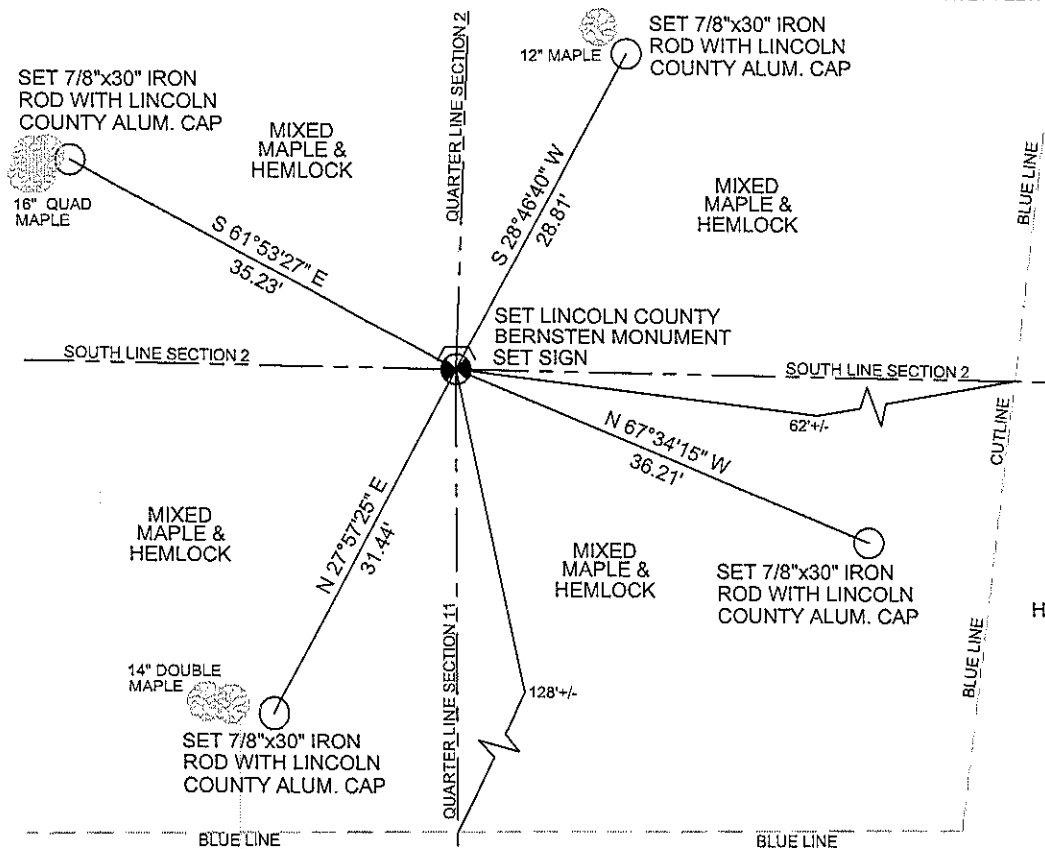
Ronald Jacobson RLS 2059-008

Registered Land Surveyor

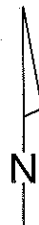
DATE: October 17, 2008

TIE SKETCH:

SHOW MINIMUM OF FOUR (4) HORIZONTAL TIE DISTANCES TO FIXED WITNESS MONUMENTS.
DESCRIBE ALL MONUMENTS FOUND OR SET. ALL DISTANCES SHOWN IN US SURVEY FEET.



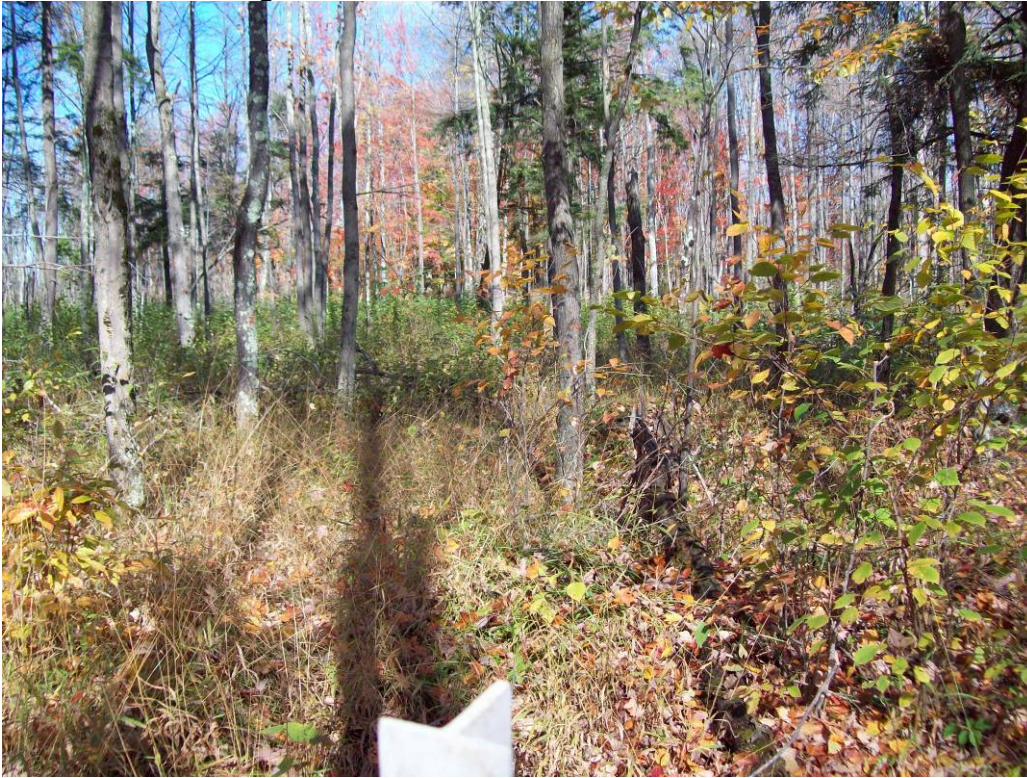
COORDINATES ARE REFERENCED TO LINCOLN COUNTY COORDINATE SYSTEM AS DEVELOPED BY THE WI. DEPARTMENT OF TRANSPORTATION AND ARE BASED ON GPS OBSERVATIONS TO CONTROL POINTS AS SUPPLIED BY LINCOLN COUNTY.



NOT TO SCALE
BEARINGS REFERENCED
LINCOLN COUNTY
COORDINATE SYSTEM

61-3

Picture 1 – Looking North From Corner



Picture 2 – Looking East From Corner



Picture 3 – Looking South From Corner



Picture 4 – Looking West From Corner



Picture 5 – Set Bernstein Monument and Sign

