

U.S. PUBLIC LAND SURVEY MONUMENT RECORD

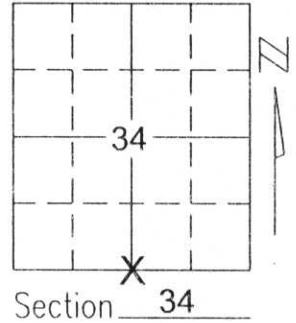
Note: This form is intended and designed to fulfill all requirements of Wisconsin Administrative Code, Chapter A-E 5.02, U.S. Public Land Survey Monument Record (3)(a)(b)(c)(d)(e)(f)(g)(h)(i). An additional sheet may be added if necessary to conform with said requirements.

(a) Corner location: Township 32 North

Range 8 East

Town/City/Village SCHLEY

County LINCOLN

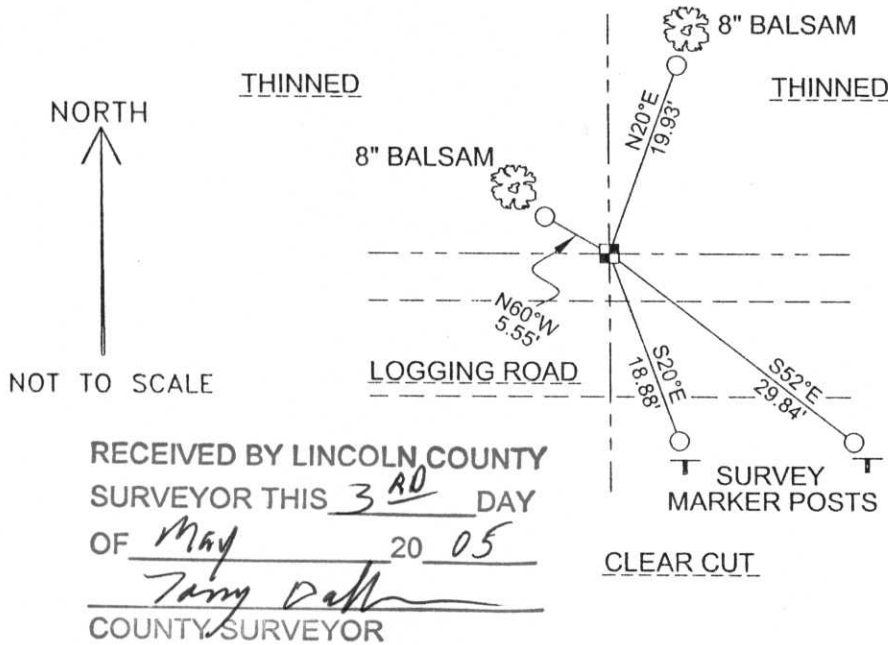


Section 34

(b)(f)(g)(h) Description of monument found at this corner and if it was accepted, state all evidence (material, testimonial, occupational, plats, records, other monuments) used as a basis for accepting. If not accepted or if nothing was found, state evidence used as basis for establishing location. If reestablished through lost corner proportionate methods, indicate all monuments, distances and directions used to establish.

SEARCHED FOR CORNER USING A 1965 MAP FOR SECTION 3. FOUND NO EVIDENCE OF STONE. AREA DISTURBED FROM LOGGING AND THE CONSTRUCTION OF A LOGGING ROAD. SET CORNER USING 1965 MAP AS BEST AVAILABLE EVIDENCE. TIED OUT CORNER TO PERPETUATE CORNER LOCATION.

(c)(d)(e) Plan view of corner with ties to at least 4 witness monuments. If in disagreement with previously established corner, show the distances between the two corners and also indicate the ties to the disputed corner.



COORDINATES ARE REFERENCED TO THE LINCOLN COUNTY COORDINATE SYSTEM AS DEVELOPED BY THE WISCONSIN DEPARTMENT OF TRANSPORTATION AND WERE DETERMINED BY GPS OBSERVATIONS ON CONTROL POINTS AS SUPPLIED BY LINCOLN COUNTY.

BEARINGS ARE REFERENCED TO MAGNETIC NORTH.

N - 132038.790
E - 447143.465

○ - SET 3/4" x 30" REBAR W/ ALUM CAP AT BASE OF BEARING TREE

■ - SOUTH 1/4 CORNER SET BERNSTEIN

RECEIVED BY LINCOLN COUNTY SURVEYOR THIS 3RD DAY OF May 20 05
Terry Dalk
COUNTY SURVEYOR

(i) I, David A. Renaud, RLS S-2142, certify that the corner location on this record was determined by me or under my direction and control and that this U.S. Public Land Survey Monument Record is correct and complete to the best of my knowledge and belief.

David Renaud 9-15-04
Signature Date



9-15

U.S. PUBLIC LAND SURVEY MONUMENT RECORD

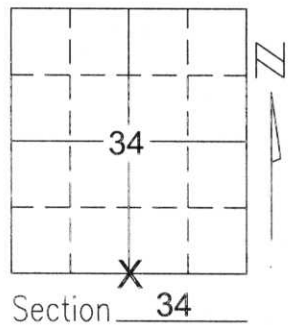
Note: This form is intended and designed to fulfill all requirements of Wisconsin Administrative Code, Chapter A-E 5.02, U.S. Public Land Survey Monument Record (3)(a)(b)(c)(d)(e)(f)(g)(h)(i). An additional sheet may be added if necessary to conform with said requirements.

(a) Corner location: Township 32 North

Range 8 East

Town/City/Village SCHLEY

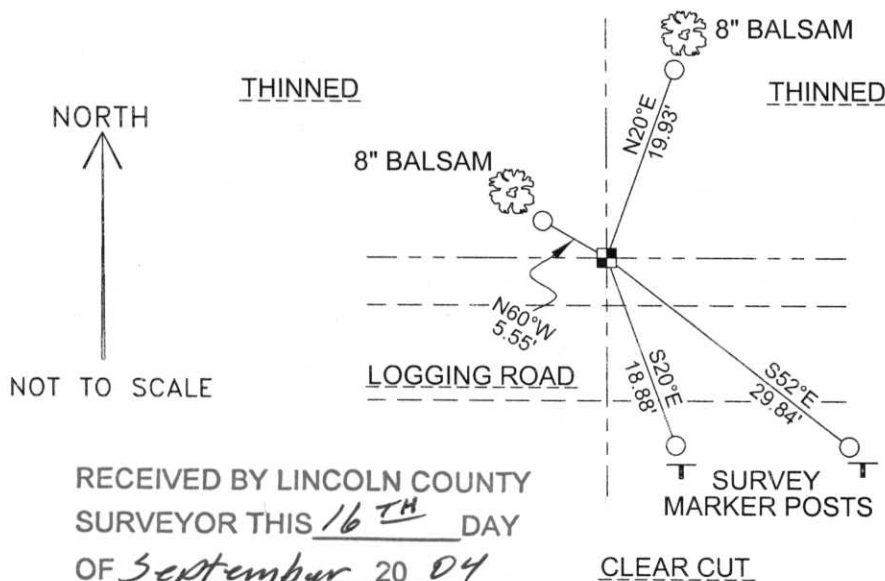
County LINCOLN



(b)(f)(g)(h) Description of monument found at this corner and if it was accepted, state all evidence (material, testimonial, occupational, plats, records, other monuments) used as a basis for accepting. If not accepted or if nothing was found, state evidence used as basis for establishing location. If reestablished through lost corner proportionate methods, indicate all monuments, distances and directions used to establish.

SEARCHED FOR CORNER USING A 1965 MAP FOR SECTION 3. FOUND NO EVIDENCE OF STONE. AREA DISTURBED FROM LOGGING AND THE CONSTRUCTION OF A LOGGING ROAD. SET CORNER USING 1965 MAP AS BEST AVAILABLE EVIDENCE. TIED OUT CORNER TO PERPETUATE CORNER LOCATION.

(c)(d)(e) Plan view of corner with ties to at least 4 witness monuments. If in disagreement with previously established corner, show the distances between the two corners and also indicate the ties to the disputed corner.



COORDINATES ARE REFERENCED TO THE LINCOLN COUNTY COORDINATE SYSTEM AS DEVELOPED BY THE WISCONSIN DEPARTMENT OF TRANSPORTATION AND WERE DETERMINED BY GPS OBSERVATIONS ON CONTROL POINTS AS SUPPLIED BY LINCOLN COUNTY.

BEARINGS ARE REFERENCED TO MAGNETIC NORTH.

N - 132038.790
E - 447143.465

- - SET 3/4" x 30" REBAR W/ ALUM CAP AT BASE OF BEARING TREE
- ⊕ - SOUTH 1/4 CORNER SET BERNSTEIN

RECEIVED BY LINCOLN COUNTY SURVEYOR THIS 16TH DAY OF September 20 04
Tony Dall
COUNTY SURVEYOR

(i) I, David A. Renaud, RLS S-2142, certify that the corner location on this record was determined by me or under my direction and control and that this U.S. Public Land Survey Monument Record is correct and complete to the best of my knowledge and belief.

David Renaud Signature 9-15-04 Date

