

U.S. PUBLIC LAND SURVEY MONUMENT RECORD

NOTE: THIS FORM IS INTENDED AND DESIGNED TO FULFILL ALL REQUIREMENTS OF WISCONSIN ADMINISTRATIVE CODE, CHAPTER A-E 7.08, U.S. PUBLIC LAND SURVEY MONUMENT RECORD (3)(a)(b)(c)(d)(e)(f)(g)(h)(i). ADDITIONAL SHEETS MAY BE NECESSARY TO CONFORM TO SAID REQUIREMENTS.

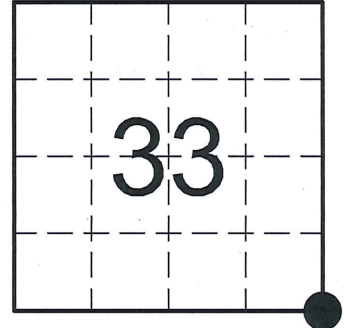
T 32 N, R 8 E

(a) CORNER LOCATION:

SOUTHEAST CORNER, SECTION 33
 TOWNSHIP 32 NORTH
 RANGE 8 EAST
 TOWN OF SCHLEY
 LINCOLN COUNTY
 WISCONSIN

(b) HISTORY OF ORIGINAL CORNER:

ORIGINAL SURVEYOR: James M. Marsh, Set post
 COMMENCING DATE: July 8, 1851
 COMPLETION DATE: July 28, 1851
 ORIGINAL BEARING TREES:
 30" Birch; N 58° E; 26 links
 10" Hemlock; S 3° E; 39 links
 11" Birch; S 7° W; 51 links
 12" Hemlock; N 30° W; 48 links



(f)(g)(h) DESCRIPTION OF MONUMENT FOUND AT THIS CORNER AND IF IT WAS ACCEPTED. STATE ALL EVIDENCE (MATERIAL, TESTIMONIAL, OCCUPATIONAL, PLATS, RECORDS, OTHER MONUMENTS) USED AS A BASIS FOR ESTABLISHING LOCATION. IF RE-ESTABLISHING THROUGH LOST CORNER PROPORTIONATE METHODS, INDICATE ALL MONUMENTS, DISTANCES, AND DIRECTIONS USED TO ESTABLISH. INDICATE TYPE OF MONUMENTS FOUND OR SET.

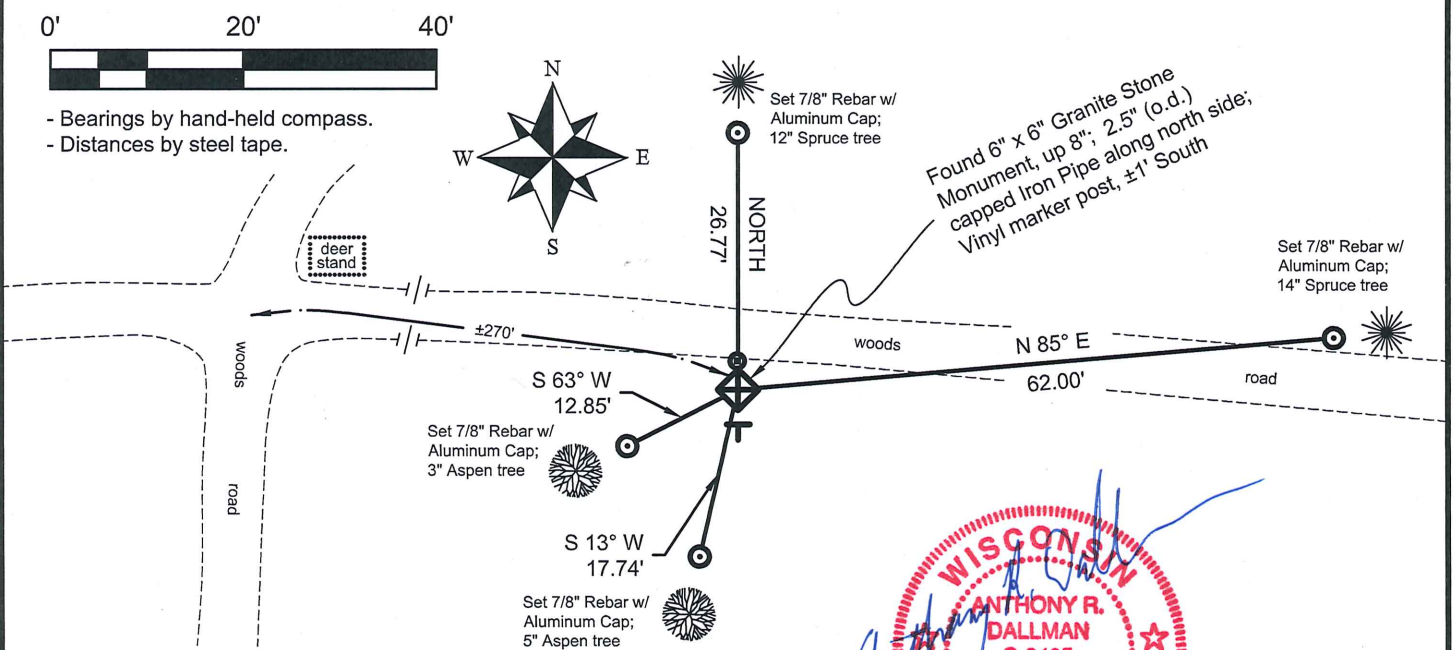
03/02/1962 - N.J.L., Rhinelander Paper Co., notes corner as "Other Accepted Corner" on a Resurvey Map of Section 3, T31N, R8E.

04/15/1966 - G. Drivas, Rhinelander Paper Co., notes a Marble Monument by Lincoln County at the corner location on a Resurvey Map of Section 4, T31N, R8E.

07/31/1984 - W. Kelly, RLS-1098, found a 6" x 6" Granite Stone Monument and a 3" Aluminum Capped Monument (?). He accepted the Aluminum Monument (?) as marking the corner location and made reference ties to perpetuate the corner location.

12/11/2012 - I, Anthony R. Dallman, PLS-2405, found the 6" x 6" Granite Stone Monument, protruding ±8" above the ground surface, and a 2.5" (o.d.) galvanized Iron Pipe w/ RIPCO cap. I concluded that the Capped Iron Pipe had been set during the Rhinelander Paper Co. resurveys to identify the ownership of RIPCO lands. I accept the 6" x 6" Granite Stone Monument as marking the location of the SE Corner of Section 33, T32N, R8E. The surrounding area is an aging clear-cut/slash, therefore all of Kelly's BT's appear to be gone. I set new reference ties to further perpetuate the corner location, as shown in the sketch below.

(c)(d)(e) PLAN VIEW OF THE CORNER WITH TIES TO AT LEAST FOUR WITNESSES. IF IN DISAGREEMENT WITH PREVIOUSLY ESTABLISHED CORNER, SHOW THE DISTANCES BETWEEN THE TWO CORNERS AND ALSO THE TIES TO THE DISPUTED CORNER.



I, ANTHONY R. DALLMAN, WISCONSIN PROFESSIONAL LAND SURVEYOR, S-2405, HEREBY CERTIFY THAT THE CORNER LOCATION ON THIS RECORD WAS REFERENCED BY ME OR UNDER MY DIRECTION AND CONTROL AND THAT THIS U.S. PUBLIC LAND SURVEY MONUMENT RECORD IS COMPLETE TO THE BEST OF MY KNOWLEDGE AND BELIEF.



Anthony R. Dallman 7/31/15
 ANTHONY R. DALLMAN, PLS S-2405

INDEX NO. Y-13

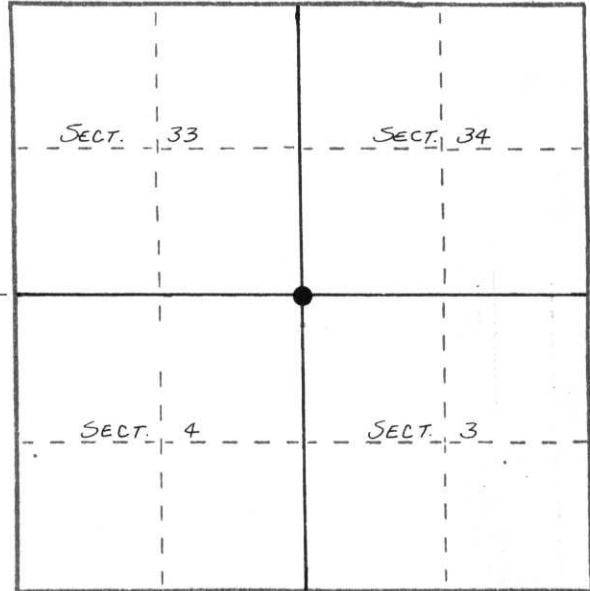
U. S. PUBLIC LAND SURVEY MONUMENT RECORD

INSTRUCTIONS: This record shall show the location of the corner and shall include all of the following nine elements (a through i).

- (a) Identify the corner by reference to the U.S. public land survey system.

○ = Corner monument restored.

ORIGINAL CORNER ESTABLISHED BY
A.G. & F.S. ELLIS IN MARCH & APRIL, 1852.



RIPCO SURVEY, 4/15/66, FOUND
GRANITE MONUMENT IN PLACE,
SET 3" ALUMINUM CAP MONUMENT.

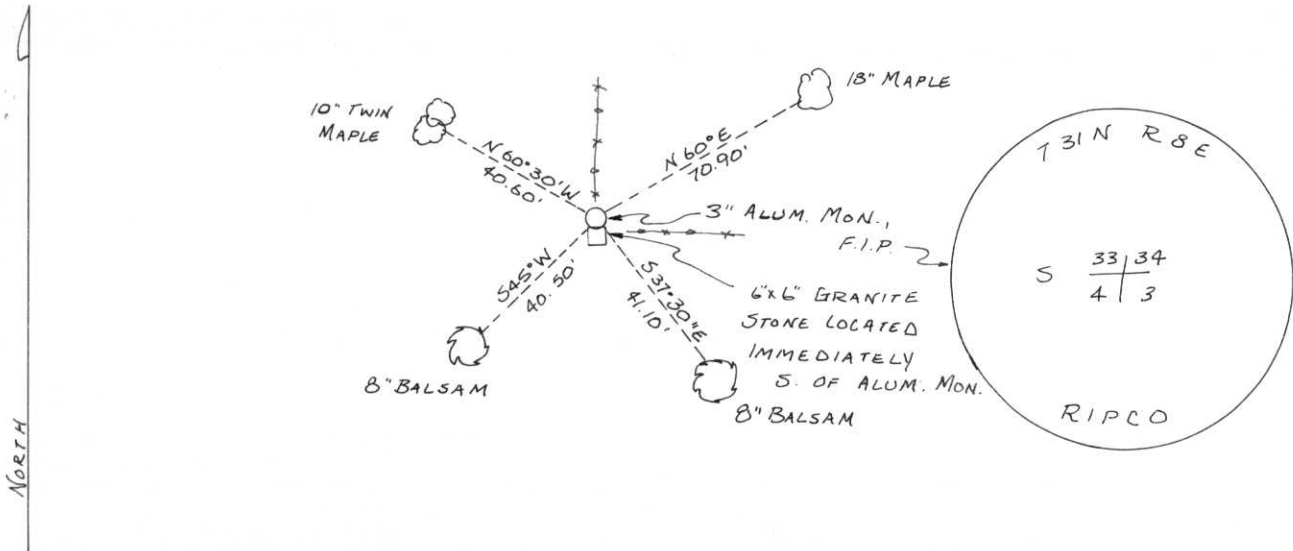
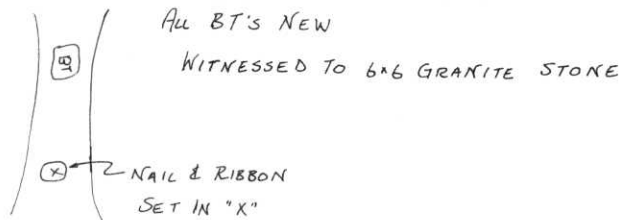
RBE

- (b) Describe any record evidence, monument evidence, occupational evidence, testimonial evidence or any other material evidence you considered, and whether the monument was found or placed.

FOUND IN PLACE: 3" ALUMINUM CAP MONUMENT
& 6" x 6" GRANITE STONE MONUMENT.

- (c) In the plan view drawing below, provide reference ties to at least 4 witness monuments, or, if the location is within a municipality, to at least 2 witness monuments. (Witness monuments shall be made of concrete, natural stone, iron or other equally durable material.) Describe witness monuments.

- (d) Show a plan view drawing depicting the relevant monuments and reference ties which is sufficient in detail to enable accurate relocation of the corner monument if the corner monument is disturbed. Indicate north.



(e) Describe any material discrepancy between the location of the corner as restored or reestablished and the location of that corner as previously restored or reestablished by distance and direction. Show the discrepancy on the plan view drawing under (d), above. Show the distances between the corner as previously restored or reestablished and (1) the corner as restored or reestablished, and (2) to at least 2 of the witness monuments shown on the drawing in (d), above.

NONE

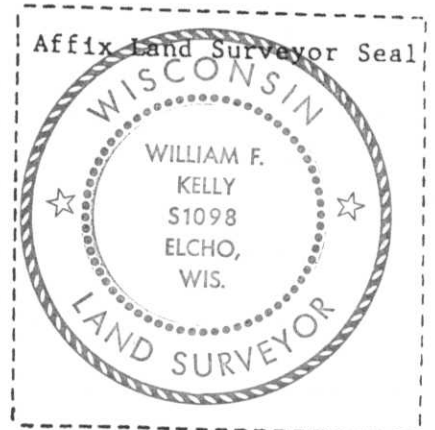
(f) Was the corner restored through acceptance of (1) an obliterated evidence location, or, (2) a found perpetuated location?

(2)

(g&h) Was the corner reestablished through lost corner proportionate methods? If so, show the method, including the directions and distances to other public land survey corners used as evidence or used for proportioning in determining the corner location?

No.

RECEIVED AT LINCOLN COUNTY
CO HOUSE THIS 21st DAY
0 December 19 84
Patrick P. Prater
TAX DESCRIPTION OFFICE



(1) I, WILLIAM F. KELLY
(type or print name) certify that the corner location shown on this record was determined by me or under my direction and control and that this U.S. Public Land Survey Monument Record is correct and complete to the best of my knowledge and belief.

William F. Kelly
Signature

7/31/84
Date