

# U.S. PUBLIC LAND SURVEY MONUMENT RECORD

NOTE: THIS FORM IS INTENDED AND DESIGNED TO FULFILL ALL REQUIREMENTS OF WISCONSIN ADMINISTRATIVE CODE, CHAPTER A-E 7.08, U.S. PUBLIC LAND SURVEY MONUMENT RECORD (3)(a)(b)(c)(d)(e)(f)(g)(h)(i). ADDITIONAL SHEETS MAY BE NECESSARY TO CONFORM TO SAID REQUIREMENTS.

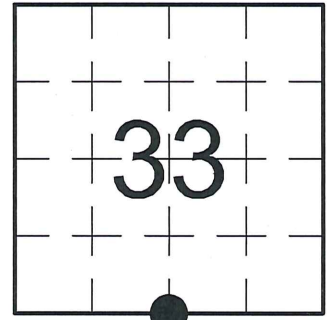
T 32 N, R 8 E

**(a) CORNER LOCATION:**

SOUTH QUARTER CORNER, SECTION 33  
 TOWNSHIP 32 NORTH  
 RANGE 8 EAST  
 TOWN OF SCHLEY  
 LINCOLN COUNTY  
 WISCONSIN

**(b) HISTORY OF ORIGINAL CORNER:**

ORIGINAL SURVEYOR: James M. Marsh, Set post  
 COMMENCING DATE: July 8, 1851  
 COMPLETION DATE: July 28, 1851  
 ORIGINAL BEARING TREES:  
 14" Hemlock; N 70° E; 6 links  
 24" Elm; S 80° E; 34 links  
 11" Sugar Maple; S 79° W; 34 links  
 8" Sugar Maple; N 51° W; 19 links



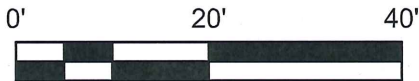
**(f)(g)(h) DESCRIPTION OF MONUMENT FOUND AT THIS CORNER AND IF IT WAS ACCEPTED. STATE ALL EVIDENCE (MATERIAL, TESTIMONIAL, OCCUPATIONAL, PLATS, RECORDS, OTHER MONUMENTS) USED AS A BASIS FOR ESTABLISHING LOCATION. IF RE-ESTABLISHING THROUGH LOST CORNER PROPORTIONATE METHODS, INDICATE ALL MONUMENTS, DISTANCES, AND DIRECTIONS USED TO ESTABLISH. INDICATE TYPE OF MONUMENTS FOUND OR SET.**

04/15/1966 - G. Drivas, Rhinelander Paper Co., notes a Marble Monument by Lincoln County at the corner location on a Resurvey Map of Section 4, T31N, R8E.

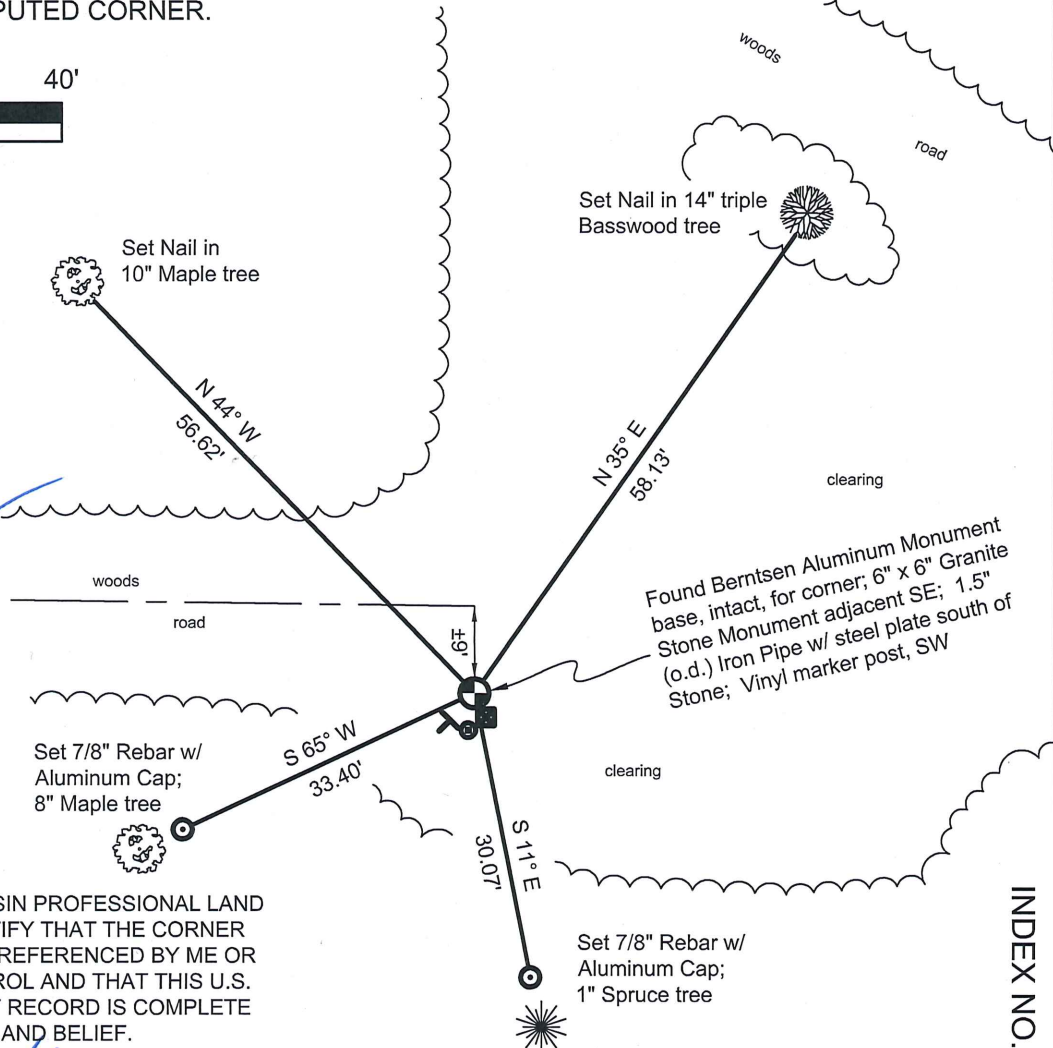
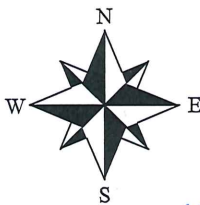
06/22/1984 - W. Kelly, RLS-1098, found a 6" x 6" Granite Stone Monument in a horizontal position. He replace the Stone with a 4" Aluminum Capped Monument and re-set the Stone in an upright position adjacent to the new Aluminum Monument. He made reference ties to perpetuate the corner location.

12/10/2012 - I, Anthony R. Dallman, PLS-2405, found the Berntsen Aluminum Monument broken with the base intact. The 6" x 6" Granite Stone Monument remains, southeast and adjacent to the Berntsen Aluminum Monument, with a 1.5" (o.d.) Iron Pipe with a 2" x 3.5" steel plate on top, south of the Stone. I held the base of the Berntsen Aluminum Monument as marking the corner location and set new reference ties to further perpetuate the corner location, as shown in the sketch below.

**(c)(d)(e) PLAN VIEW OF THE CORNER WITH TIES TO AT LEAST FOUR WITNESSES. IF IN DISAGREEMENT WITH PREVIOUSLY ESTABLISHED CORNER, SHOW THE DISTANCES BETWEEN THE TWO CORNERS AND ALSO THE TIES TO THE DISPUTED CORNER.**



- Bearings by hand-held compass.  
 - Distances by steel tape.



I, ANTHONY R. DALLMAN, WISCONSIN PROFESSIONAL LAND SURVEYOR, S-2405, HEREBY CERTIFY THAT THE CORNER LOCATION ON THIS RECORD WAS REFERENCED BY ME OR UNDER MY DIRECTION AND CONTROL AND THAT THIS U.S. PUBLIC LAND SURVEY MONUMENT RECORD IS COMPLETE TO THE BEST OF MY KNOWLEDGE AND BELIEF.

*Anthony R. Dallman* 7/28/15  
 ANTHONY R. DALLMAN, PLS S-2405

INDEX NO. Y-11

# U. S. PUBLIC LAND SURVEY MONUMENT RECORD

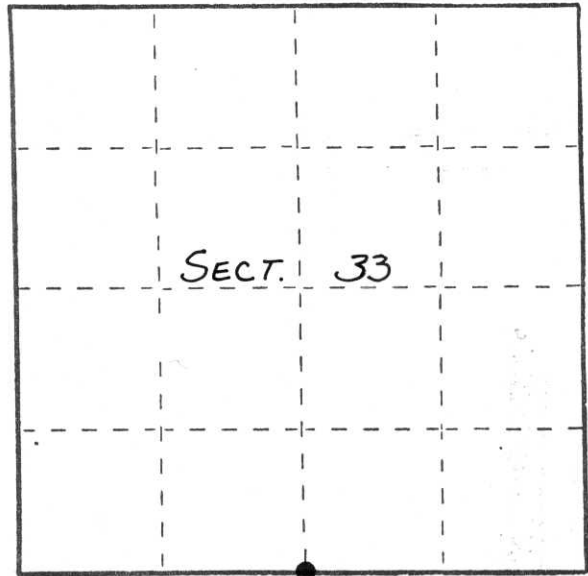
**INSTRUCTIONS:** This record shall show the location of the corner and shall include all of the following nine elements (a through i).

- (a) Identify the corner by reference to the U.S. public land survey system.

○ = Corner monument restored.

ORIGINAL CORNER ESTABLISHED  
By JAMES MARSH, JULY OF 1851.

Re Survey Notes of section  
by RIFCO



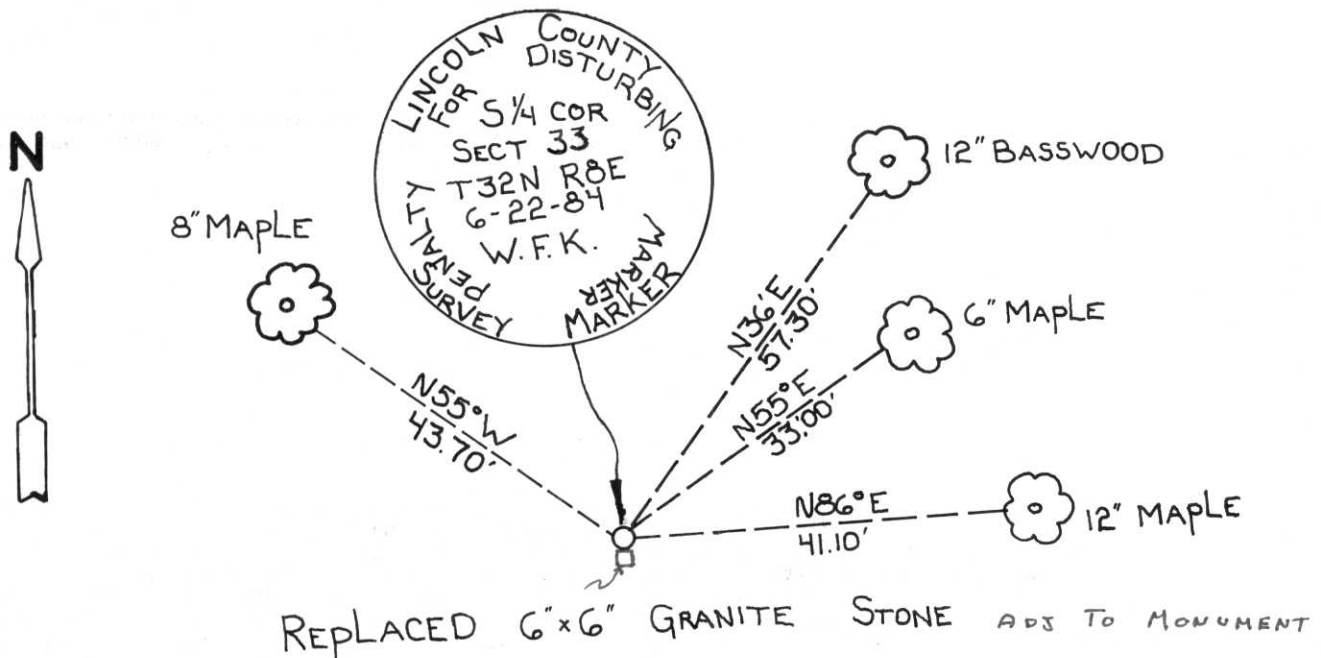
T32N-R8E

- (b) Describe any record evidence, monument evidence, occupational evidence, testimonial evidence or any other material evidence you considered, and whether the monument was found or placed.

FOUND IN PLACE: 6"x6" GRANITE STONE IN HORIZONTAL POSITION  
REPLACED STONE WITH  
4" ALUMINUM CAP  
MONUMENT.  
RE-SET STONE IN UPRIGHT POSITION

- (c) In the plan view drawing below, provide reference ties to at least 4 witness monuments, or, if the location is within a municipality, to at least 2 witness monuments. (Witness monuments shall be made of concrete, natural stone, iron or other equally durable material.) Describe witness monuments.

- (d) Show a plan view drawing depicting the relevant monuments and reference ties which is sufficient in detail to enable accurate relocation of the corner monument if the corner monument is disturbed. Indicate north.



(e) Describe any material discrepancy between the location of the corner as restored or reestablished and the location of that corner as previously restored or reestablished by distance and direction. Show the discrepancy on the plan view drawing under (d), above. Show the distances between the corner as previously restored or reestablished and (1) the corner as restored or reestablished, and (2) to at least 2 of the witness monuments shown on the drawing in (d), above.

NONE.

(f) Was the corner restored through acceptance of (1) an obliterated evidence location, or, (2) a found perpetuated location?

(2)

(g&h) Was the corner reestablished through lost corner proportionate methods? If so, show the method, including the directions and distances to other public land survey corners used as evidence or used for proportioning in determining the corner location?

No.

RECEIVED AT LINCOLN COUNTY  
COURTHOUSE THIS 21<sup>ST</sup> DAY  
OF December 1984  
Patrick P. Priebe  
TAX DESCRIPTION OFFICE



(i) I, WILLIAM F. KELLY  
(type or print name) certify that the corner location shown on this record was determined by me or under my direction and control and that this U.S. Public Land Survey Monument Record is correct and complete to the best of my knowledge and belief.

William F. Kelly

6-22-84

Signature

Date