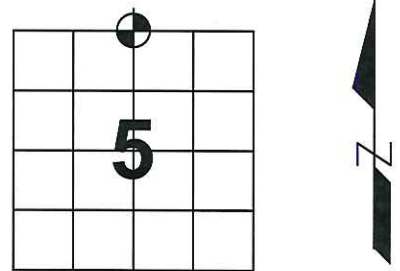


U.S. PUBLIC LAND SURVEY MONUMENT RECORD

Note: This form is intended and designed to fulfill all requirements of Wisconsin Administrative Code, Chapter A-E 7.08, U.S. Public Land Survey Monument Record (3) (a) (b) (c) (d) (e) (f) (g) (h) (i). An additional sheet may be added if necessary to conform with said requirements.

(a) Corner location: Township 31 North
 Range 8 East
 Town/~~City~~/~~Village~~ Pine River
 County Lincoln



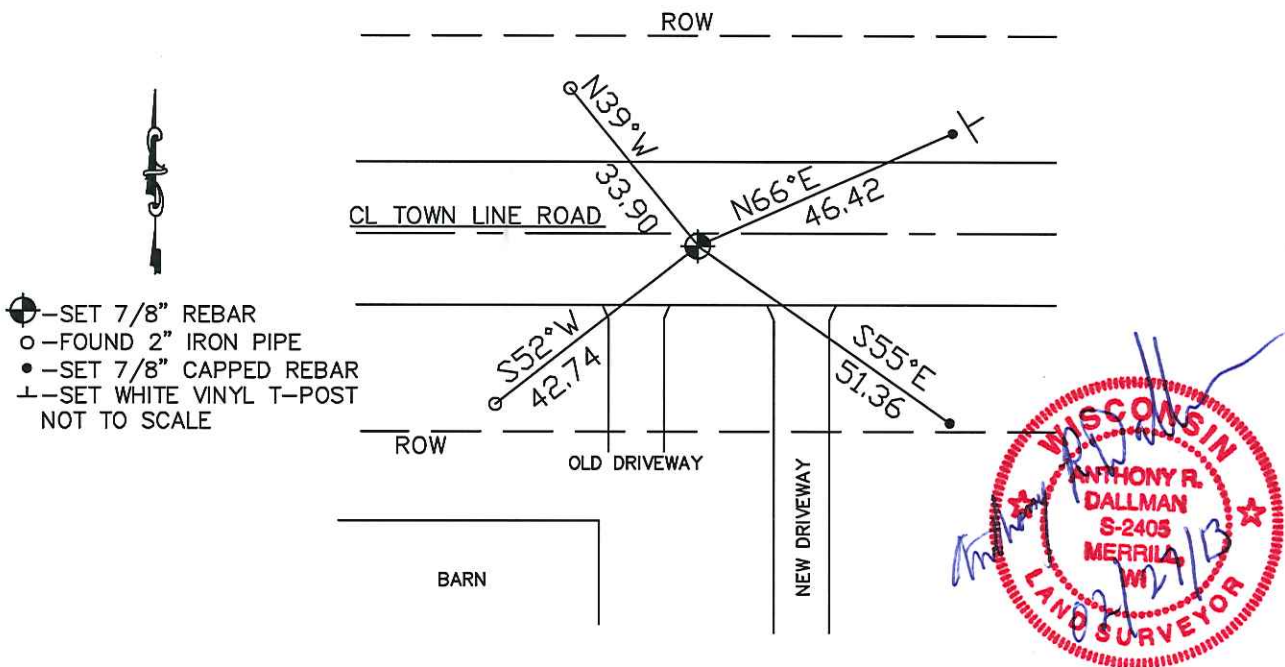
(b) (f) (g) (h) Description of monument found at this corner and if it was accepted, state all evidence (material, testimonial, occupational, plats, records, other monuments) used as basis for accepting. If not accepted or if nothing was found, state evidence used as basis for establishing location. If reestablished through lost corner proportionate methods, indicate all monuments, distances and directions used to establish.

July 1851 – Marsh, James M. Set post for Quarter Section Corner. Birch 12 N75°E 39 lks
 Birch 10 S80°E 34 lks
 Birch 14 S38°W 28 lks
 Sugar 8 N78°W 23 lks

Nov. 1990 – Krueger, Gary R. Excavated area and found no evidence of corner. Reset corner after extensive traverse of Section, locating road centerlines and existing corners and fence lines. Comparing to and proportioning with original notes, the corner location was determined. Set a 1 3/16"X30" iron bar.

May 2012 – Dallman, Anthony R. Found iron hex bar bent. Reset 7/8" rebar per two remaining ties down 8" and 1' south of Centerline Town Line Road. Road material was too compact to set a Berntsen Hwy monument. Ties as shown below:

(c) (d) (e) Plan view of corner with ties to at least 4 witness monuments. If in disagreement with previously established corner, show the distance between the two corners and also indicate the ties to the disputed corner.



(i) I, Anthony R. Dallman

(type or print name) certify that the corner location on this record was determined by me or under my direction and control and that this U.S. Public Land Survey Monument Record is correct and complete to the best of my knowledge and belief.

Anthony R. Dallman
 Signature Date 02/27/13

Index No. A-7

U.S. PUBLIC LAND SURVEY MONUMENT RECORD

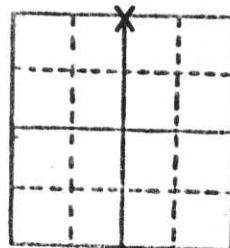
Note: This form is intended and designed to fulfill all requirements of Wisconsin Administrative Code, Chapter A-E 5.02, U.S. Public Land Survey Monument Record (3) (a) (b) (c) (d) (e) (f) (g) (h) (i). An additional sheet may be added if necessary to conform with said requirements.

(a) Corner location: Township 31 North

Range 8 East

Town Pine River

County Lincoln

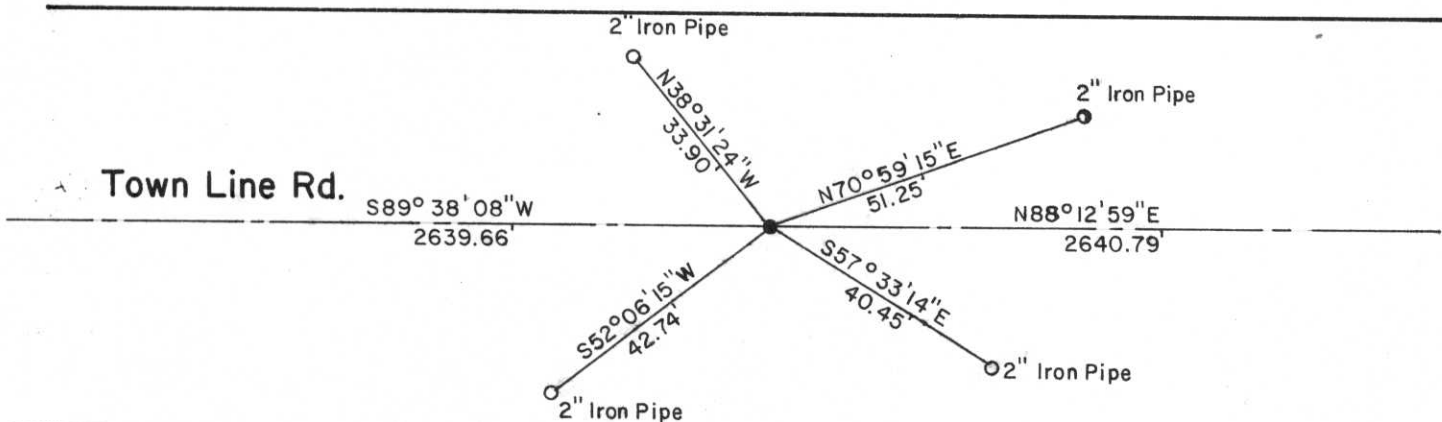


Section 5

b) (f) (g) (h) Description of monument found at this corner and if it was accepted, state all evidence (material, testimonial, occupational, plats, records, other monuments) used as a basis for accepting. If not accepted or if nothing was found, state evidence used as basis for establishing location. If reestablished through lost corner proportionate methods, indicate all monuments, distances and directions used to establish.

Excavated area and found no evidence of corner. Re-set corner after extensive traverse of Section, locating road centerlines and existing corners and fence lines. Comparing to and proportioning with original notes the corner location was determined. Set a 1 3/16" x 30" iron bar.

c) (d) (e) Plan view of corner with ties to at least 4 witness monuments. If in disagreement with previously established corner, show the distances between the two corners and also indicate the ties to the disputed corner.



(i) I, Gary R. Krueger RLS NO.1619
 (Type or print name) certify that the corner location on this record was determined by me or under my direction and control and that this U.S. Public Land Survey Monument Record is correct and complete to the best of my knowledge and belief.

Gary R. Krueger
 Signature

11-2-90
 Date



Index No. A-7









