

Attachment to Tie Sheet A-5 T31N, R8E

Visited this corner on May 18, 2012 and found 3 of the Reference Monument in good condition, the Southwest Reference Monument was knocked out. The Corner Monument, Iron Hex Bar, had been hit by a plow or grader and was bent out of position. The 3 Reference Monuments crossed well with the Tie Sheet and we reset the Southwest Reference Monument per the Tie Sheet. Corner Monument is still bent with the top out of position. Set a white "T" Post near the Southeast Reference Monument. Field Book #5 Page 134.

Anthony Dallman *6/08/12*

Anthony Dallman

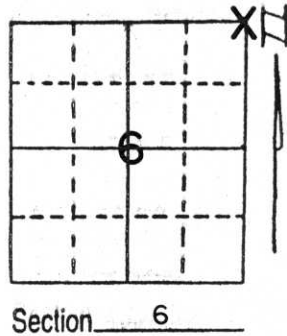
Lincoln County Surveyor



U.S. PUBLIC LAND SURVEY MONUMENT RECORD

Note: This form is intended and designed to fulfill all requirements of Wisconsin Administrative Code, Chapter A-E 5.02, U.S. Public Land Survey Monument Record (3) (a) (b) (c) (d) (e) (f) (g) (h) (i). An additional sheet may be added if necessary to conform with said requirements.

(a) Corner location: Township 31 North
 Range 8 East/West
 Town/City/Village PINE RIVER
 County LINCOLN

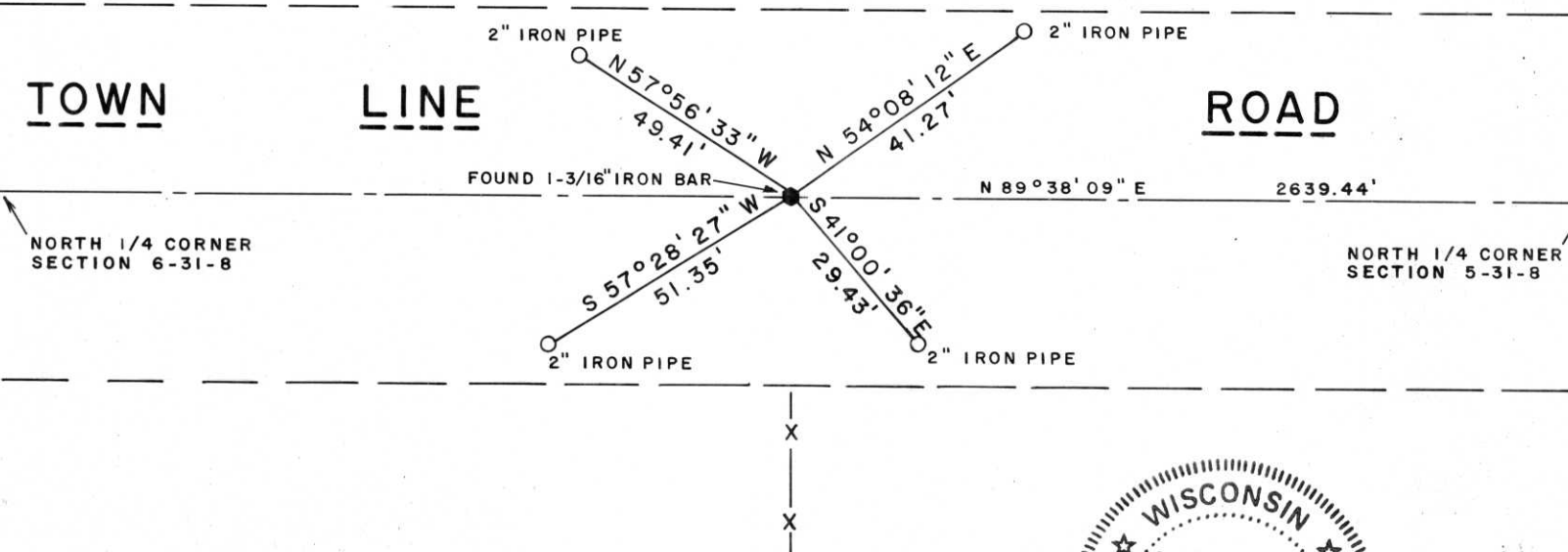


Section 6

(b) (f) (g) (h) Description of monument found at this corner and if it was accepted, state all evidence (material, testimonial, occupational, plats, records, other monuments) used as a basis for accepting. If not accepted or if nothing was found, state evidence used as basis for establishing location. If reestablished through lost corner proportionate methods, indicate all monuments, distances and directions used to establish.

Corner set and tied out by Gary Krueger R.L.S. per tie sheet dated 11-2-90. Retied corner as all four ties had been destroyed by road construction.

(c) (d) (e) Plan view of corner with ties to at least 4 witness monuments. If in disagreement with previously established corner, show the distances between the two corners and also indicate the ties to the disputed corner.



(i) I, LaVerne H. Mosher
 (type or print name) certify that the corner location on this record was determined by me or under my direction and control and that this U.S. Public Land Survey Monument Record is correct and complete to the best of my knowledge and belief.



Index No. A-5

LaVerne H. Mosher 8/7/92
 Signature Date

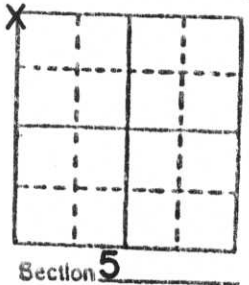
U.S. PUBLIC LAND SURVEY MONUMENT RECORD

Note: This form is intended and designed to fulfill all requirements of Wisconsin Administrative Code, Chapter A-E 5.02, U.S. Public Land Survey Monument Record (3) (a) (b) (c) (d) (e) (f) (g) (h) (i). An additional sheet may be added if necessary to conform with said requirements.

(a) Corner location: Township 31 North
 Range 8 East

Town Pine River

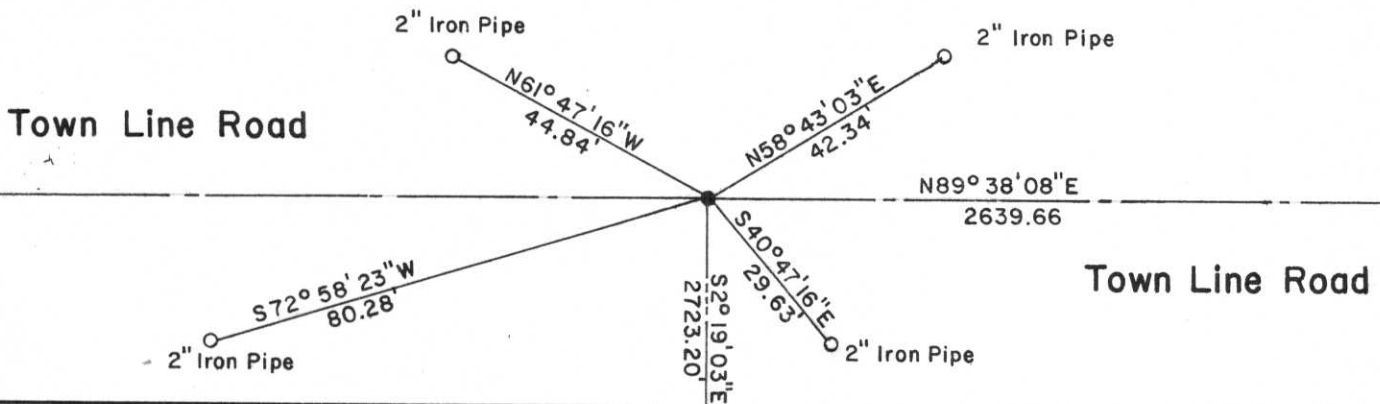
County Lincoln



b) (f) (g) (h) Description of monument found at this corner and if it was accepted, state all evidence (material, testimonial, occupational, plats, records, other monuments) used as a basis for accepting. If not accepted or if nothing was found, state evidence used as basis for establishing location. If reestablished through lost corner proportionate methods, indicate all monuments, distances and directions used to establish.

Excavated with backhoe and found Sandstone Monument. Stone broke in two pieces, and was tied and replaced with a 1 3/16" x 30" iron bar and accepted as correct. Corner was tied into traverse of Section 5.

c) (d) (e) Plan view of corner with ties to at least 4 witness monuments. If in disagreement with previously established corner, show the distances between the two corners and also indicate the ties to the disputed corner.



(i) I, Gary R. Krueger RLS NO.1619
 (type or print name) certify that the corner location on this record was determined by me or under my direction and control and that this U.S. Public Land Survey Monument Record is correct and complete to the best of my knowledge and belief.

Gary R. Krueger
 Signature

11-2-90
 Date



Index No. A-5









