

CERTIFIED LAND CORNER RESTORATION

Index No. U-23

State of Wisconsin }
County of LINCOLN } ss.

History of original corner establishment:

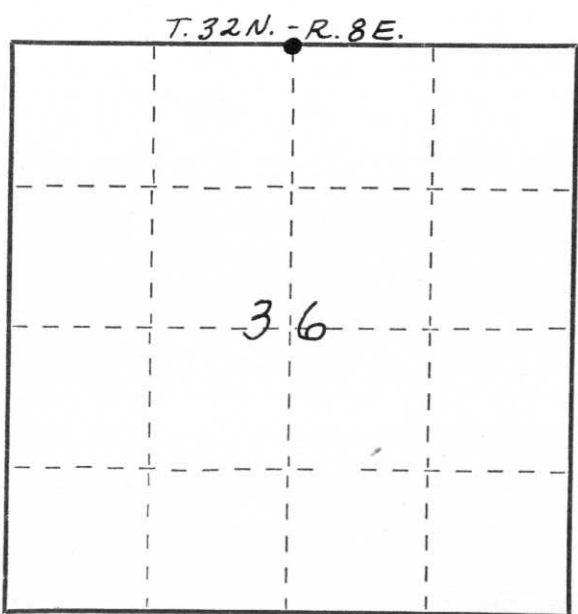


William F. Kelly
3-12-76

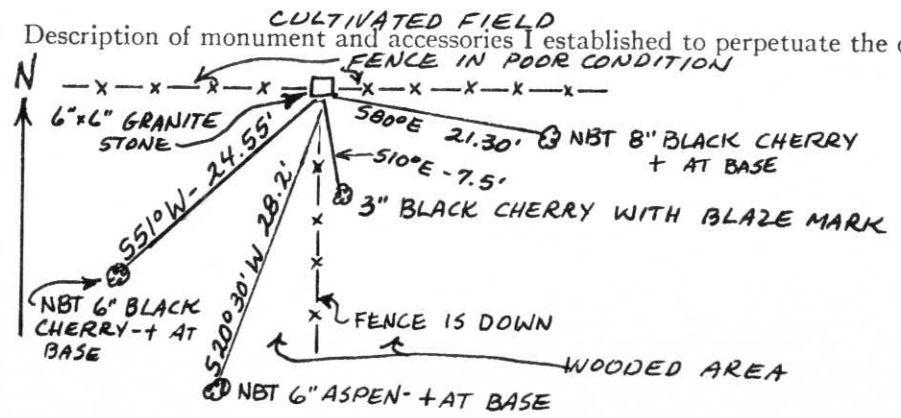
I WILLIAM F. KELLY do hereby certify that on the 28TH day of NOVEMBER, 1975, I found evidence of the N 1/4 SECTION corner of SECTION 36 Township 32, North, Range 8E, Fourth, Principal Meridian, as described hereon; and that from this evidence I established a new monument and accessories as described hereon to perpetuate the original location of this corner.

Description of corner evidence found:
LOCATED 6"x6" GRANITE STONE AT OLD FENCE LINE INTERSECTION. STONE HAD BEEN HIT AND KNOCKED OVER ON ITS SIDE AND CORNER FENCE POST KNOCKED OUT. STONE HAS LINE ACROSS TOP. N 1/4 COR. SECT. 36 T.32N R.8E.

Resident witnesses:



Description of monument and accessories I established to perpetuate the original location of this corner.



RESET STONE IN UPRIGHT POSITION AND PLACED 3 1" IRON PIPES NEXT TO STONE UNDER GROUND SURFACE FOR DETECTION. STONE IS 7" OUT OF GROUND. MARKED NEW BEARING TREES.

Dated at ELCHO, Wis., this 12TH day of MARCH, 1976.

Signature William F. Kelly Title REGISTERED LAND SURVEYOR Registration No. 51098
(County Surveyor, Registered Land Surveyor, or other duly authorized official)

Office of Register of Deeds, County of _____, I hereby certify that the within instrument was filed in this office for record on the _____ day of _____, 19____ at _____ o'clock _____ M.

(Register of Deeds)

By _____ Deputy

○ = Corner monument restored.