

U.S. PUBLIC LAND SURVEY MONUMENT RECORD

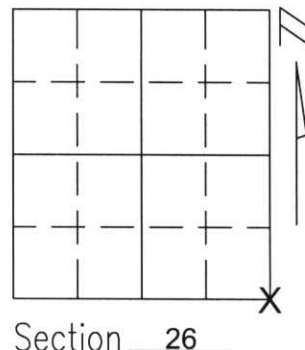
Note: This form is intended and designed to fulfill all requirements of Wisconsin Administrative Code, Chapter A-E 5.02, U.S. Public Land Survey Monument Record (3)(a)(b)(c)(d)(e)(f)(g)(h)(i). An additional sheet may be added if necessary to conform with said requirements.

(a) Corner location: Township 32 North

Range 8 East

Town/City/Village SCHLEY

County LINCOLN

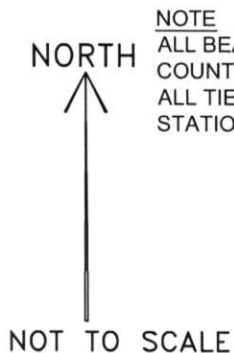


(b)(f)(g)(h) Description of monument found at this corner and if it was accepted, state all evidence (material, testimonial, occupational, plats, records, other monuments) used as a basis for accepting. If not accepted or if nothing was found, state evidence used as basis for establishing location. If reestablished through lost corner proportionate methods, indicate all monuments, distances and directions used to establish.

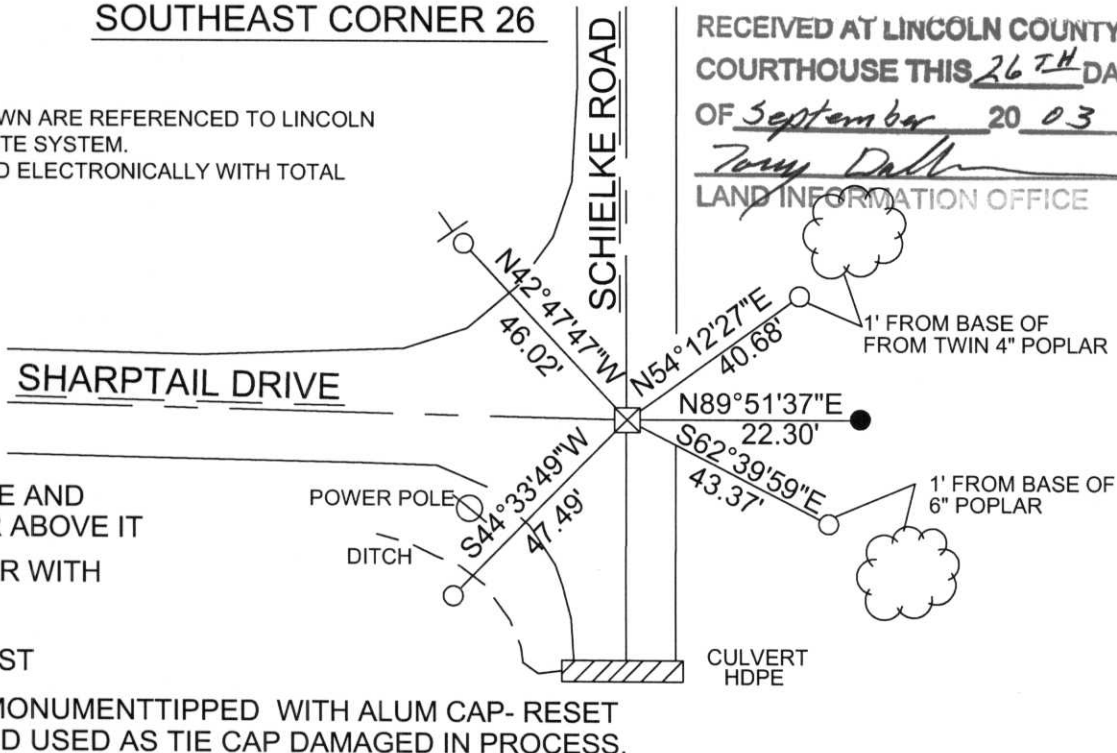
I found a 6"X6" stone 2 1/2 feet below the road surface. I then place a 1 1/4" x 18" rebar above it. I accepted the stone as best evidence of the corner location and perpetuated it as shown below.

(c)(d)(e) Plan view of corner with ties to at least 4 witness monuments. If in disagreement with previously established corner, show the distances between the two corners and also indicate the ties to the disputed corner.

SOUTHEAST CORNER 26



NOTE
 ALL BEARINGS SHOWN ARE REFERENCED TO LINCOLN COUNTY COORDINATE SYSTEM.
 ALL TIES MEASURED ELECTRONICALLY WITH TOTAL STATION.



RECEIVED AT LINCOLN COUNTY COURTHOUSE THIS 26TH DAY OF September 20 03
Tony Dahl
 LAND INFORMATION OFFICE

- FOUND 6"X6" STONE AND SET 1 1/4"X 18" BAR ABOVE IT
- SET 3/4"X30" REBAR WITH ALUM. CAP
- SET VINYL TEE POST
- FOUND 2" RIPCO MONUMENT TIPPED WITH ALUM CAP- RESET THE MONUMENT AND USED AS TIE CAP DAMAGED IN PROCESS.

(i) I, Kyle R. Fischer
 (type or print name) certify that the corner location on this record was determined by me or under my direction and control and that this U.S. Public Land Survey Monument Record is correct and complete to the best of my knowledge and belief.

Kyle R. Fischer Sept-17-03
 Signature Date

