

U.S. PUBLIC LAND SURVEY MONUMENT RECORD

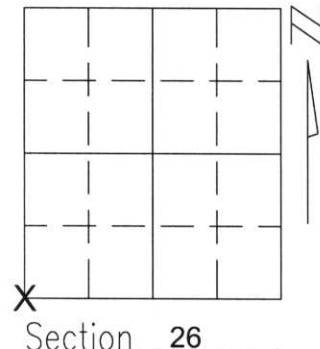
Note: This form is intended and designed to fulfill all requirements of Wisconsin Administrative Code, Chapter A-E 5.02, U.S. Public Land Survey Monument Record (3)(a)(b)(c)(d)(e)(f)(g)(h)(i). An additional sheet may be added if necessary to conform with said requirements.

(a) Corner location: Township 32 North

Range 8 East

Town/City/Village SCHLEY

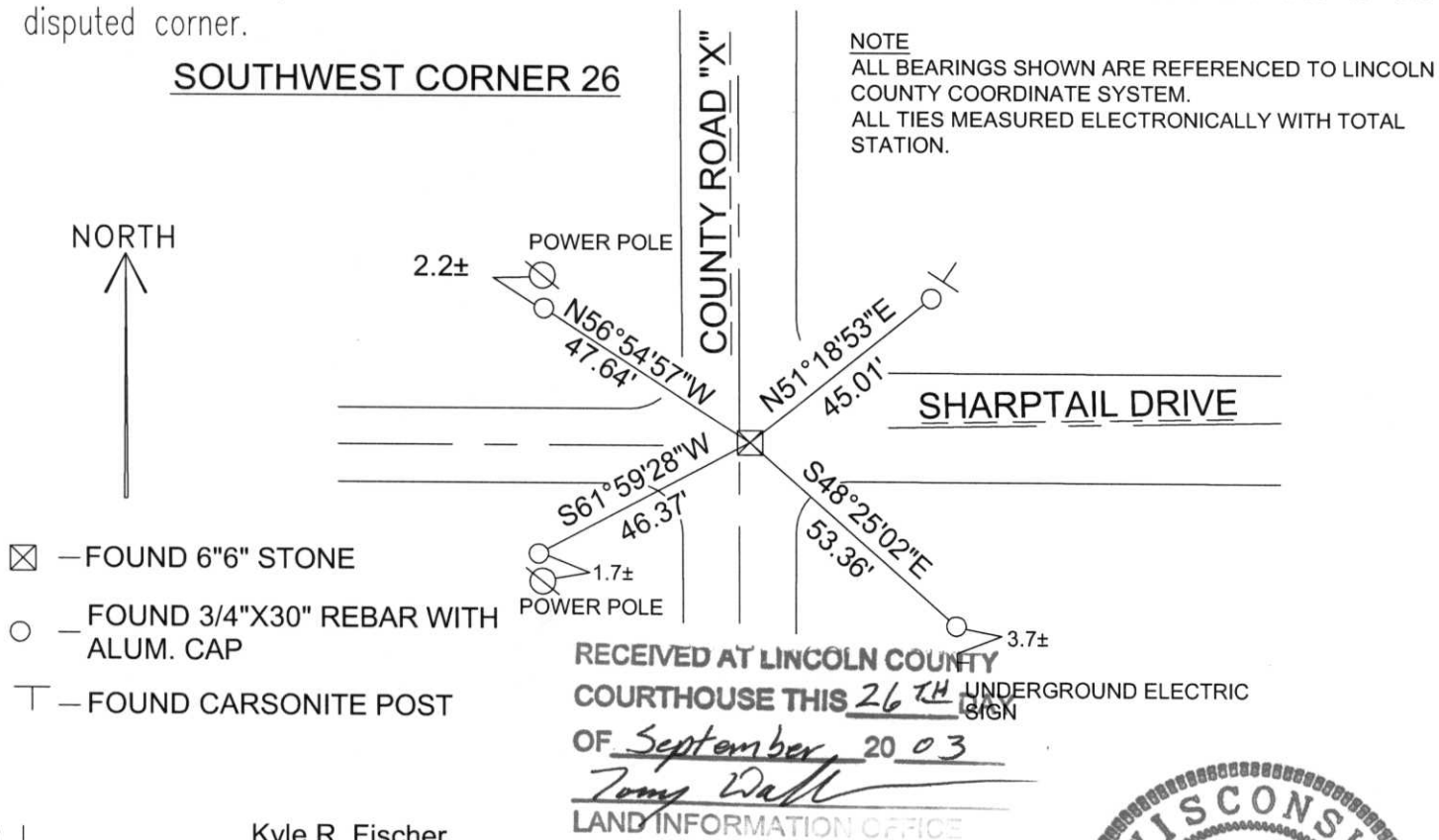
County LINCOLN



(b)(f)(g)(h) Description of monument found at this corner and if it was accepted, state all evidence (material, testimonial, occupational, plats, records, other monuments) used as a basis for accepting. If not accepted or if nothing was found, state evidence used as basis for establishing location. If reestablished through lost corner proportionate methods, indicate all monuments, distances and directions used to establish.

I was informed by Al Fox (County Highway Department Operator) that he had dug for this corner about 5 years ago and had found a 6"x6" Stone about 1 foot below the pavement. After finding no tie sheet on file for this corner I dug and found the 6"x6" Stone. I accepted the stone as best evidence of the corner location and perpetuated it as shown below by using found markers.

(c)(d)(e) Plan view of corner with ties to at least 4 witness monuments. If in disagreement with previously established corner, show the distances between the two corners and also indicate the ties to the disputed corner.



- ☒ — FOUND 6"6" STONE
- — FOUND 3/4"X30" REBAR WITH ALUM. CAP
- ⊥ — FOUND CARSONITE POST

(i) I, Kyle R. Fischer
(type or print name) certify that the corner location on this record was determined by me or under my direction and control and that this U.S. Public Land Survey Monument Record is correct and complete to the best of my knowledge and belief.

Kyle R. Fischer
Signature
Date Sept 17, 2003

