

# U.S. PUBLIC LAND SURVEY MONUMENT RECORD

NOTE: THIS FORM IS INTENDED AND DESIGNED TO FULFILL ALL REQUIREMENTS OF WISCONSIN ADMINISTRATIVE CODE, CHAPTER LAND SURVEY MONUMENT RECORD (3) (a) (b) (c) (d) (e) (f) (g) (h) (i). AN ADDITIONAL SHEET MAY BE ADDED IF NECESSARY TO CONFORM WITH SAID REQUIREMENTS. A-E 7.08 U.S. PUBLIC

(a) CORNER LOCATION: TOWNSHIP 32 NORTH  
 RANGE 8 EAST/~~WEST~~  
 TOWN/~~CITY/VILLAGE~~ SCHLEY  
 COUNTY LINCOLN



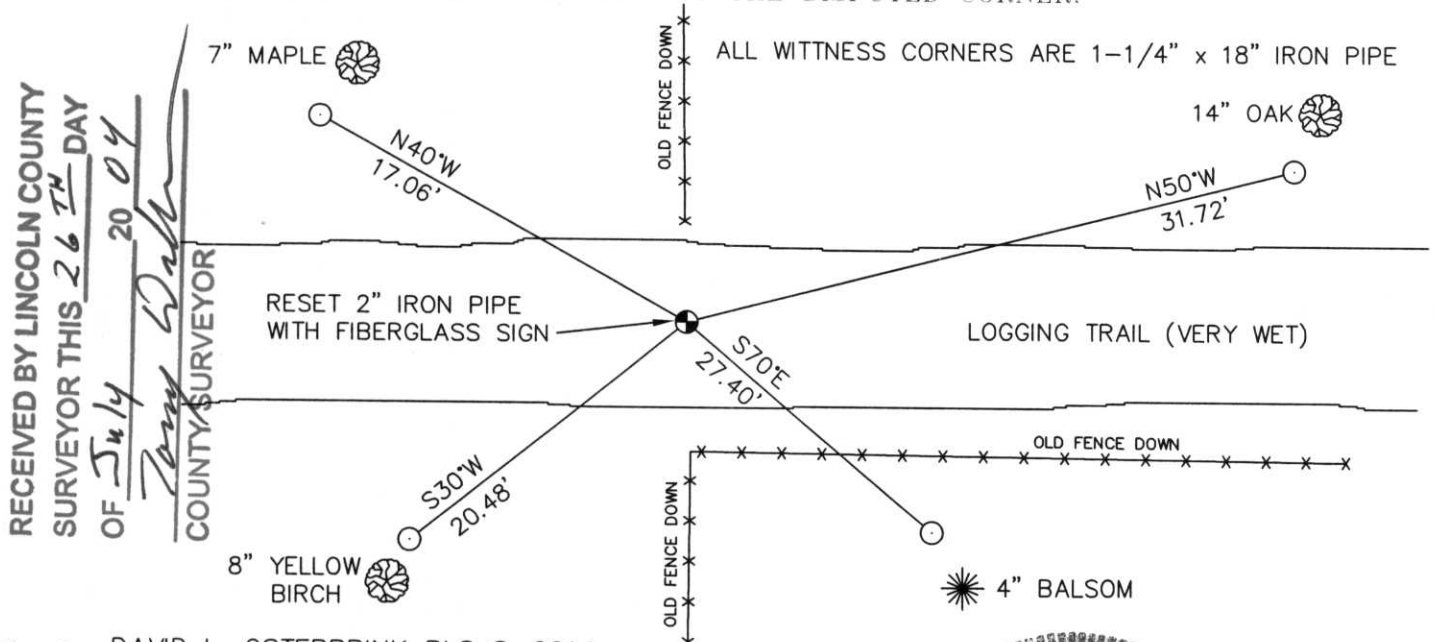
SECTION X 30

(b) (f) (g) (h) DESCRIPTION OF MONUMENT FOUND AT THIS CORNER AND IF IT WAS ACCEPTED, STATE ALL EVIDENCE (MATERIAL, TESTIMONIAL, OCCUPATIONAL, PLATS, RECORDS, OTHER MONUMENTS) USED AS BASIS FOR ACCEPTING. IF NOT ACCEPTED OR IF NOTHING WAS FOUND, STATE EVIDENCE USED AS BASIS FOR ESTABLISHING LOCATION. IF REESTABLISHED THROUGH LOST CORNER PROPORTIONATE METHODS, INDICATE ALL MONUMENTS, DISTANCES AND DIRECTIONS USED TO ESTABLISH. INDICATE TYPE OF MONUMENT FOUND OR SET AND SIGN POST.

ON 3-19-01 I USED THIS CORNER WHILE WORKING IN SECTION 31-32-8. THE IRON PIPE WAS IN THE GROUND AND APPEARED UNDISTURBED. HELD AS CORNER.

ON 5-26-04, WORKING IN SECTION 30-32-8, I WENT TO THIS CORNER AND FOUND THE IRON PIPE LAYING IN THE DITCH. THE TIES WERE ALL OVER GROWN OR GONE. I WAS ABLE TO GET A 2 FOOT SQUARE AREA FOR CORNER LOCATION FROM TIE REMNANTS. I REMEMBERED I HAD SHOT THIS CORNER 3-19-01. GOT THAT FIELD BOOK, FOUND MY TRAVERSE POINTS AND RESET THE CORNER FROM THE 3-19-01 DATA. THE CORNER FELL IN MY 2 FOOT SQUARE AREA FROM TIE REMNANTS AND WAS ON A NORTH / SOUTH FENCE LINE. RESET 2" IRON PIPE, FLUSH WITH GROUND. PUT OUT NEW TIES.

(c) (d) (e) PLAN VIEW OF CORNER WITH TIES TO AT LEAST 4 WITNESS MONUMENTS. IF IN DISAGREEMENT WITH PREVIOUSLY ESTABLISHED CORNER, SHOW THE DISTANCES BETWEEN THE TWO CORNERS AND ALSO INDICATE THE TIES TO THE DISPUTED CORNER.



(i) I, DAVID L. OSTERBRINK RLS S-2014  
 (TYPE OR PRINT NAME) CERTIFY THAT THE CORNER LOCATION ON THIS RECORD WAS DETERMINED BY ME OR UNDER MY DIRECTION AND CONTROL AND THAT THIS U.S. PUBLIC LAND SURVEY MONUMENT RECORD IS CORRECT AND COMPLETE TO THE BEST OF MY KNOWLEDGE AND BELIEF.

*David L. Osterbrink* 7-25-04  
 SIGNATURE DATE



INDEX NO. \_\_\_\_\_

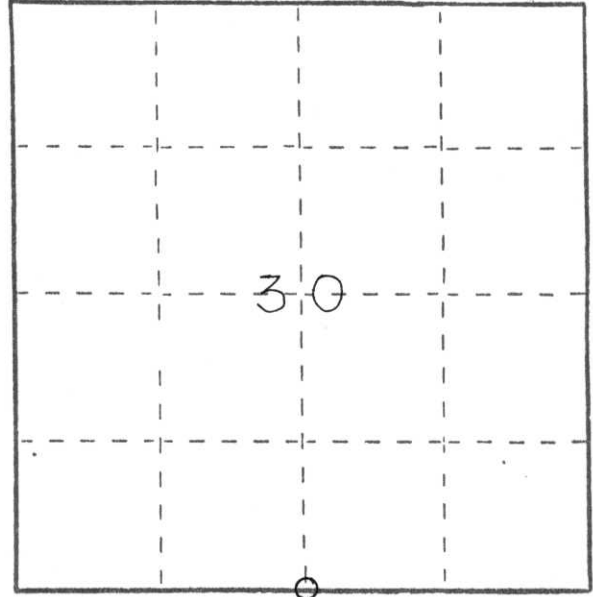
# U. S. PUBLIC LAND SURVEY MONUMENT RECORD

**INSTRUCTIONS:** This record shall show the location of the corner and shall include all of the following nine elements (a through i).

- (a) Identify the corner by reference to the U.S. public land survey system.

○ = Corner monument restored.

The South  $\frac{1}{4}$  corner for Section 30, T32N, R8E, Town of Schley Lincoln County, Wisconsin.

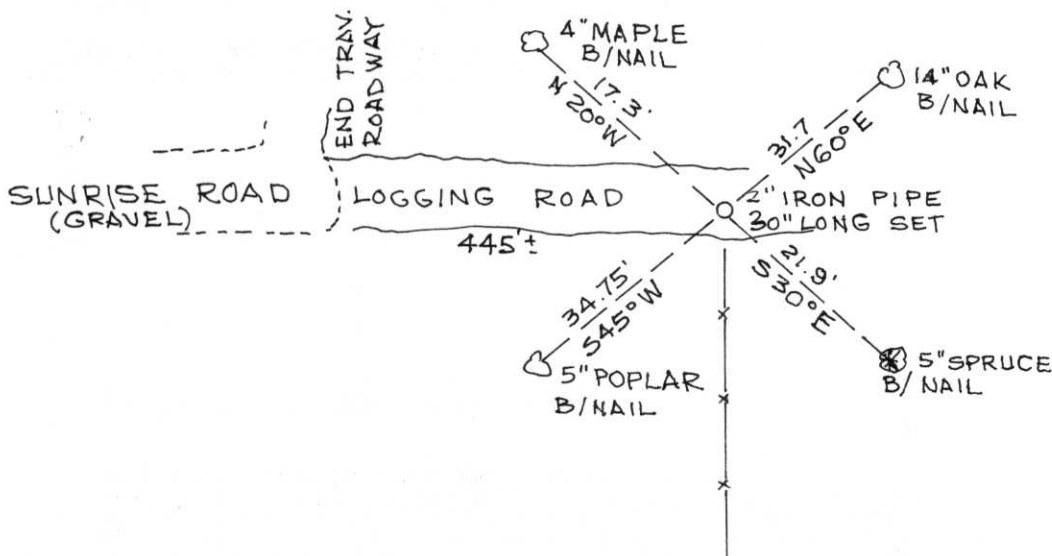


- (b) Describe any record evidence, monument evidence, occupational evidence, testimonial evidence or any other material evidence you considered, and whether the monument was found or placed.

Local resident Mr. Polak claimed to have seen stone monument but that it was destroyed in logging road construction. Said corner was on fence line to south and in center of road. We ran EDM traverse about Section 30 and corner fit calculated location. Set 2" X 30" iron pipe.

- (c) In the plan view drawing below, provide reference ties to at least 4 witness monuments, or, if the location is within a municipality, to at least 2 witness monuments. (Witness monuments shall be made of concrete, natural stone, iron or other equally durable material.) Describe witness monuments.

- (d) Show a plan view drawing depicting the relevant monuments and reference ties which is sufficient in detail to enable accurate relocation of the corner monument if the corner monument is disturbed. Indicate north.



(e) Describe any material discrepancy between the location of the corner as restored or reestablished and the location of that corner as previously restored or reestablished by distance and direction. Show the discrepancy on the plan view drawing under (d), above. Show the distances between the corner as previously restored or reestablished and (1) the corner as restored or reestablished, and (2) to at least 2 of the witness monuments shown on the drawing in (d), above.

No known discrepancies.

(f) Was the corner restored through acceptance of (1) an obliterated evidence location, or, (2) a found perpetuated location?

(2) a found perpetuated location

(g&h) Was the corner reestablished through lost corner proportionate methods? If so, show the method, including the directions and distances to other public land survey corners used as evidence or used for proportioning in determining the corner location?

No.

(1) I, EDWIN R. ABENDROTH  
(type or print name) certify that the corner location shown on this record was determined by me or under my direction and control and that this U.S. Public Land Survey Monument Record is correct and complete to the best of my knowledge and belief.

Edwin R. Abendroth 5-29-87  
Signature Date

