

U.S. PUBLIC LAND SURVEY MONUMENT RECORD

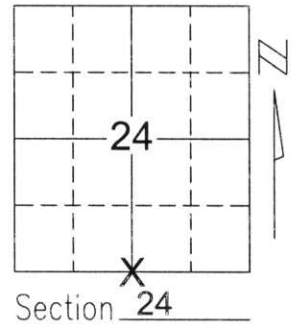
Note: This form is intended and designed to fulfill all requirements of Wisconsin Administrative Code, Chapter A-E 5.02, U.S. Public Land Survey Monument Record (3)(a)(b)(c)(d)(e)(f)(g)(h)(i). An additional sheet may be added if necessary to conform with said requirements.

(a) Corner location: Township 32 North

Range 8 East

Town/City/Village SCHLEY

County LINCOLN



(b)(f)(g)(h) Description of monument found at this corner and if it was accepted, state all evidence (material, testimonial, occupational, plats, records, other monuments) used as a basis for accepting. If not accepted or if nothing was found, state evidence used as basis for establishing location. If reestablished through lost corner proportionate methods, indicate all monuments, distances and directions used to establish.

SEARCHED FOR CORNER WITH JACK HAMMER. FOUND STONE 1' BELOW ROAD GRADE AT THE INTERSECTION OF THE CENTERLINE OF CTH "C", AND THE CENTERLINE OF POTATO LANE. SET 3/4" REBAR ON SOUTH SIDE OF STONE AND TIED OUT TO PERPETUATE CORNER LOCATION.

RECEIVED BY LINCOLN COUNTY SURVEYOR THIS 16TH DAY

OF September 20 04

Yang Dahl

COUNTY SURVEYOR

(c)(d)(e) Plan view of corner with ties to at least 4 witness monuments. If in disagreement with previously established corner, show the distances between the two corners and also indicate the ties to the disputed corner.

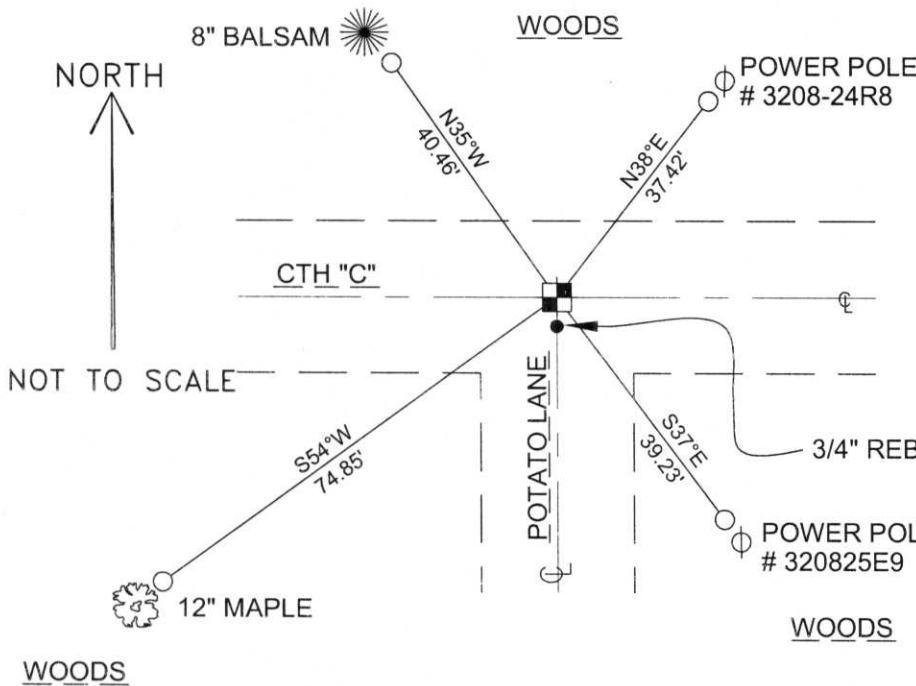
COORDINATES ARE REFERENCED TO THE LINCOLN COUNTY COORDINATE SYSTEM AS DEVELOPED BY THE WISCONSIN DEPARTMENT OF TRANSPORTATION AND WERE DETERMINED BY GPS OBSERVATIONS ON CONTROL POINTS AS SUPPLIED BY LINCOLN COUNTY.

BEARINGS ARE REFERENCED TO MAGNETIC NORTH.

N - 142618.417
E - 457710.849

○ - SET 3/4" x 30" REBAR W/ ALUM CAP

■ - SOUTH 1/4 CORNER FOUND STONE



243287

Q-23


(i) I, David A. Renaud, RLS certify that the corner location on this record was determined by me or under my direction and control and that this U.S. Public Land Survey Monument Record is correct and complete to the best of my knowledge and belief.

David Renaud

9-15-04

Signature

Date

A photograph showing a person's hands holding a white rectangular piece of paper. The paper has the number '243287' written on it in black ink. The background is a dark, textured surface, possibly a rock face or a wall, with some lighter-colored patches. The person's hands are visible at the top of the frame, and they are wearing a white long-sleeved shirt.

243287